



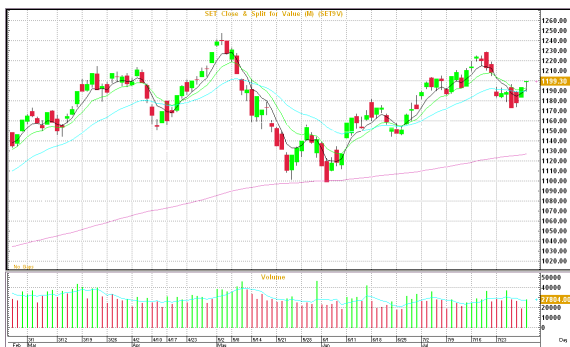
MORNING CALL ACTION NOTES

By Globlex Research Department

August 1, 2012

MARKET SUMMARY- Jul 31, 2012

| | | | |
|---------------|----------|---------------|--------------|
| CLOSE | 1,199.30 | VOLUME | B27,803.55bn |
| CHANGE | 5.98 | P/E | 15.47 |
| % CHG. | 0.50% | P/BV | 2.10 |



WORLD INDICES

| | Last | Change | %Change |
|-------------------|-----------|--------|---------|
| DJIA | 13,008.68 | -64.33 | -0.49% |
| S&P500 | 1,379.32 | -5.98 | -0.43% |
| NASDAQ | 2,939.52 | -6.32 | -0.21% |
| FTSE | 5,635.28 | -58.35 | -1.02% |
| DAX | 6,772.26 | -1.80 | -0.03% |
| NIKKEI | 8,695.06 | 59.62 | 0.69% |
| H. SENG | 19,796.81 | 211.41 | 1.08% |
| FTSTI | 3,036.40 | 3.60 | 0.12% |

COMMODITIES

| | Last | Change | %Change |
|--------------|----------|--------|---------|
| NYMEX | 88.06 | -1.72 | -1.92% |
| BRENT | 104.92 | -1.28 | -1.21% |
| GOLD | 1,614.60 | -9.40 | -0.58% |

CURRENCIES

| | Last | Change | %Change |
|------------------|--------|--------|---------|
| BT / \$ | 31.50 | -0.07 | -0.22% |
| \$ / EURO | 1.2296 | 0.0037 | 0.30% |
| YEN / \$ | 78.10 | -0.06 | -0.08% |

Transaction by Investor Group in SET

| Investor Type | 31-7-12 | MTD | YTD |
|---------------------|-----------|-----------|------------|
| Local Institutions | -2,860.96 | -6,648.12 | -51,619.12 |
| Proprietary Trading | 978.92 | -688.93 | -146.93 |
| Foreign | 1,520.02 | 295.96 | 64,132.96 |
| Retail | 362.02 | 7,041.12 | -12,366.88 |

Market View : แนวต้าน 1,200 / 1,210

Technical : แนวรับ 1,191 / 1,178 แนวต้าน 1,200/1,210

หุ้นแนะนำพิเศษ: KTB แนวรับ 16.10-16.20 แนวต้าน 16.80-16.90

หุ้นเด่นรายวัน: ARIP SRICHA AOT

วันอังคารตลาดหุ้นไทยปิดบวก ดัชนี SET ปิดที่ 1,199.30 จุด เพิ่มขึ้น 5.98 จุด (+0.50%) มูลค่าการซื้อขาย 27,803.55 ล้านบาท นักลงทุนต่างชาติซื้อสุทธิอีก 1,520.02 ล้านบาท

แนวโน้มตลาดหุ้นไทย ทางฝ่ายวิจัย บล.โกลเบล็ก คาดมีแนวโน้มผันผวนในกรอบ 1,191-1,210 การทดสอบแนวต้านบริเวณ 1,200 / 1,210 อาจมีแรงขายทำรอบออกมา และจะเป็นการซื้อขายรายหลักทรัพย์ตามผลประกอบการ ในขณะที่ S50U12 ระยะสั้นอื่น 817 ได้มั่นคงแนวโน้มขาขึ้นรูปแบบ U-Shapes มีโอกาสปิด GAP แนวต้าน 830 SET50 ระหว่างวันการปรับตัวขึ้นอื่น 822-824 เป็นแนวรับพิจารณาถือหรือซื้อ แนวด้านต่อไป 830 / 842 GFQ12 เก่งกำไรในรอบ 24,240-24,400 GFV12 เก่งกำไรในรอบ 24,350-24,540 SVQ12 เก่งกำไรระยะสั้นในรอบ 882-898 SVV12 เก่งกำไรระยะสั้นในรอบ 885-904

กลยุทธ์ กลุ่มธนาคารยังคงแรงซื้อระยะสั้นโดดเด่น แนวโน้มกลับตัวขึ้นต่อเนื่อง (ในขณะที่การปรับตัวยังคงเป็นจังหวะในการเข้าซื้อเก็งกำไรเล่นรอบ) BBL SCB KBANK และ KTB ที่ยังกลับตัวขึ้นน้อยกว่าเมื่อเปรียบเทียบกับกลุ่มโรงพยาบาลปรับตัวสร้างฐานราคาได้อย่างมีนัยสำคัญ และเริ่มมีแรงซื้อกลับเข้ามา BGH BH KH กลุ่มสื่อสารรอบปรับตัวเพื่อซื้อเก็งกำไรเล่นรอบ กลุ่มพลังงาน ปรับตัวซื้อ หุ้นรายหลักทรัพย์ CPALL BIGC ระยะกลาง ถือ / ซื้อคืนเมื่อปรับลงแรง

หุ้นแนะนำพิเศษ

KTB (ราคาปิด 16.40 ซื้อเป้าหมาย 23) ปัจจัยพื้นฐานแข็งแกร่งจากการเป็นแบงก์รัฐซึ่งในการสนับสนุนการกระตุ้นเศรษฐกิจของรัฐบาลจะช่วยหนุนให้สินเชื่อบริการเติบโตต่อเนื่อง ฝ่ายวิจัยประมาณการกำไรสุทธิปี 55 ราว 2.4 หมื่นล้านบาทซึ่งเติบโต 41% จากปี 54 ในช่วงครึ่งแรกมีกำไร 13,719 ล้านบาทซึ่งเติบโต 28% YoY โดยคิดเป็น 57% ของประมาณการทั้งปี

หุ้นเด่นรายวัน

ARIP (ราคาปิด 1.38 ซื้อเก็งกำไร) บริษัทขาดรายได้ 2H55 เติบโต 30% จากครึ่งปีแรก เนื่องจากเข้าสู่ช่วงไฮซีซั่นของอุตสาหกรรมไอที ประกอบกับมีผลิตภัณฑ์ที่รอเปิดตัวอีกหลายราย หนุนผลประกอบการทั้งปีเติบโตต่อเนื่อง (ที่มา : ทุนหุ้น)

SRICHA (ปิด 21.80 บาทซื้อเก็งกำไร) เก่งกำไรข่าวจะประกาศขายปันผลระหว่างกาลสูงถึง 2 บาทต่อหุ้นคิดเป็นอัตราผลตอบแทนประมาณ 9% นอกจากนี้ยังมีข่าวเตรียมบันทึกเงินภาษีจากสรรพากรและรัฐบาลสิงคโปร์อีกประมาณ 200 ล้านบาทซึ่งคิดเป็นกำไรต่อหุ้นสูงถึง 0.66 บาท (ที่มา :

หนังสือพิมพ์ทันหุ้น 1-8-12)

AOT (ราคา 68.50 ซื้อเก็งกำไร เป้า consensus 69.49) ได้ประโยชน์จากการกลับมาให้บริการสนามบินคอนเมืองของสายการบิน low cost ซึ่งคาดว่าจะปี 56 จะมีผู้โดยสารใช้บริการสนามบินคอนเมืองเพิ่มขึ้นเป็น 14 ล้านคน จาก 3.4 ล้านคน/ปี ในปัจจุบัน

| ปัจจัยบวก | ปัจจัยลบ |
|--|--|
| <ul style="list-style-type: none"> + สหรัฐรายงานดัชนีความเชื่อมั่นผู้บริโภคในเดือนก.ค.เพิ่มขึ้นแตะระดับ 65.9 จุดจากระดับ 62.7 จุดในเดือนมิ.ย. เป็นการดีดตัวจากที่ลดลงติดต่อกัน 4 เดือน + สหรัฐรายงานดัชนีราคาบ้านเพิ่มขึ้นต่อในเดือนพ.ค. โดยดัชนีราคาบ้านใน 20 เมืองใหญ่เพิ่มขึ้น 0.9% + สหรัฐรายงานดัชนีผู้จัดการฝ่ายจัดซื้อ (PMI) เพิ่มขึ้นแตะระดับ 53.7 จุดในเดือนก.ค.จากระดับ 52.9 จุดในเดือนมิ.ย. ซึ่งเป็นระดับที่มากกว่า 50 บ่งชี้ว่ากิจกรรมทางธุรกิจของสหรัฐยังขยายตัวและเติบโตเร็วกว่าคาด | <ul style="list-style-type: none"> - เข้านี้เงินรายงานดัชนีผู้จัดการฝ่ายจัดซื้อ (PMI) ภาคการผลิตเดือนก.ค. ลดลงมาอยู่ที่ระดับ 50.1 จากระดับของเดือนมิ.ย.ที่ 50.2 และต่ำกว่าคาด - นักวิเคราะห์คาดการณ์ธนาคารกลางสหรัฐอาจยังไม่ประกาศใช้มาตรการผ่อนคลายเชิงปริมาณ (QE3) ในการซื้อพันธบัตรถือครองใหญ่ในการประชุมครั้งนี้ไปจนถึงการประชุมในเดือนก.ย. - สหรัฐรายงานการใช้จ่ายส่วนบุคคลทรงตัวในเดือนมิ.ย.บ่งชี้ว่าผู้บริโภคธนาคารแห่งประเทศไทยรายงานภาวะเศรษฐกิจเดือนมิ.ย.ชะลอตัวลงจากเดือนก่อนหน้าจากภาคการส่งออกที่หดตัว 4.3% ในภาคการเกษตรเครื่องใช้ไฟฟ้า และเคมีภัณฑ์ โดยดัชนีผลผลิตอุตสาหกรรมในเดือนมิ.ย.ลดลง 9.6% จากการหดตัวของการผลิตเพื่อส่งออกเป็นหลัก มหาวิทยาลัยหอการค้าไทยเปิดเผยว่าวิกฤติเศรษฐกิจในยุโรปส่งผลกระทบต่อ การส่งออกของไทยทั้งทางตรงและอ้อมมากถึง 3.5% ของการส่งออกทั้งหมด หรือคิดเป็นมูลค่าความเสียหาย 298,876 ล้านบาท และทำให้ตลาดส่งออกหลักของไทยชะลอตัวลงเหลือ 4.5% จากปีก่อนที่ขยายตัว 15.7% |

ปัจจัยที่ต้องจับตา

| ในประเทศ | ต่างประเทศ |
|--|---|
| <ul style="list-style-type: none"> ➢ 1 ส.ค. เปิดประชุมรัฐสภาสมัยประชุมสามัญทั่วไป/ประชุมสภาผู้แทนราษฎรสมัยสามัญทั่วไป / รายงานดัชนี CPI เดือนก.ค. | <ul style="list-style-type: none"> ➢ 1 ส.ค. ประชุมวันสุดท้ายของคณะกรรมการกำหนดนโยบายการเงินของธนาคารกลางสหรัฐเกี่ยวกับอัตราดอกเบี้ยนโยบาย จีน - สหพันธ์พาณิชย์และการจัดซื้อ (CFLP) เปิดเผยดัชนี PMI ภาคการผลิตเดือนก.ค. / HSBC เผยดัชนี PMI ภาคการผลิตเดือนก.ค. อิตาลี - ฝรั่งเศส - เยอรมนี - อังกฤษ - อียู - เปิดเผยดัชนี PMI ภาคการผลิตเดือนก.ค. สหรัฐ - เปิดเผยผลสำรวจการขึ้นขอสินเชื่อจากรายสัปดาห์ / รายงานการจ้างงานทั่วประเทศเดือนก.ค. / ดัชนี PMI ภาคการผลิตเดือนก.ค. / อัตราจ้างงานและอัตราว่างงานในเมืองใหญ่เดือนมิ.ย. / การใช้จ่ายภาคการก่อสร้างเดือนมิ.ย. / การผลิตเดือนก.ค. / สต็อกน้ำมันรายสัปดาห์ / ดัชนี PMI ภาคการผลิตทั่วโลกเดือนก.ค. / คณะกรรมการกำหนดนโยบายการเงินของธนาคารกลางสหรัฐ (FOMC) แถลงมติอัตราดอกเบี้ย ➢ 1-2 ส.ค. กำหนดประชุมธนาคารกลางอังกฤษ ➢ 2 ส.ค. กำหนดประชุมธนาคารกลางยุโรป |

รายชื่อหลักทรัพย์ที่ติดเกณฑ์บัญชี Cash Balance

| | |
|-------|---|
| *GOLD | มีผลบังคับใช้ 16 ก.ค. ถึงวันที่ 3 ส.ค. 55 |
| *IRC | มีผลบังคับใช้ 23 ก.ค. ถึงวันที่ 10 ส.ค. 55 |
| *BTC | มีผลบังคับใช้ 30 ก.ค. 55 ถึงวันที่ 17 ส.ค. 55 |
| *RCI | มีผลบังคับใช้ 30 ก.ค. 55 ถึงวันที่ 17 ส.ค. 55 |

*** SUPER มีผลบังคับใช้ 30 ก.ค. 55 ถึงวันที่ 17 ส.ค. 55**

*****เนื่องจากการลงทุนในหลักทรัพย์ ดังกล่าวมีการซื้อขายคิดไปจากสภาพปกติของตลาดดังนั้นผู้ลงทุนควรศึกษาข้อมูลก่อนการตัดสินใจลงทุน**

สรุปภาวะตลาดต่างประเทศ

| | | | |
|------------------|----------------|------------------|------------------|
| ตลาดหุ้นดาวโจนส์ | ลดลง 64.33 จุด | ตลาดน้ำมัน NYMEX | ลดลง 1.72 เหรียญ |
|------------------|----------------|------------------|------------------|

ดัชนีตลาดหุ้นดาวโจนส์ปิดตลาดปรับตัวลดลง 64.33 จุด ตลาดถูกกดคั่นจากนักลงทุนเทขายทำกำไรและชะลอการลงทุนเพื่อรอฟังผลการประชุมของเฟดที่จะมีขึ้นในเย็นวันนี้ อย่างไรก็ตามดัชนีไม่ได้ลดลงมากนักเนื่องจากนักลงทุนส่วนหนึ่งยังเชื่อมั่นว่าเฟดจะมีการประกาศใช้มาตรการกระตุ้นเศรษฐกิจ นอกจากนี้ยังได้แรงหนุนจากรายงานตัวเลขดัชนีความเชื่อมั่นผู้บริโภคของสหรัฐในเดือนก.ค.ซึ่งปรับตัวเพิ่มขึ้นเป็น 65.9 จุดจาก 62.7 จุดในเดือนมิ.ย. และ สแตนดาร์ด แอนด์ พัวร์/เกส ซิลเลอร์เปิดตัวเลขดัชนีราคาบ้านของ 20 เขตเมืองในสหรัฐประจำเดือนพ.ค.ปรับตัวสูงขึ้น 0.9%ทำให้ปิดตลาดดัชนีดาวโจนส์ลดลงเพียง 64.33 จุด หรือ 0.49% ปิดที่ 13,008.68 จุด ดัชนี S&P 500 ลดลง 5.98 จุด หรือ 0.43% ปิดที่ 1,379.32 จุด และดัชนี Nasdaq ปรับตัวลง 6.32 จุด หรือ 0.21% ปิดที่ 2,939.52 จุด

ราคาน้ำมันดิบที่ตลาดล่วงหน้า NYMEX ส่งมอบเดือนก.ย.ลดลง 1.72 ดอลลาร์ต่อบาร์เรล ตลาดเริ่มไม่มั่นใจว่าธนาคารกลางสหรัฐ (เฟด) และธนาคารกลางยุโรป (อีซีบี) จะใช้มาตรการกระตุ้นเศรษฐกิจเพิ่มเติมในการประชุมครั้งนี้หรือไม่ หลังจากสหรัฐเปิดเผยข้อมูลเศรษฐกิจที่เป็นบวก โดยเฉพาะตัวเลขดัชนีความเชื่อมั่นของผู้บริโภคในเดือนก.ค.ซึ่งปรับตัวเพิ่มขึ้นเป็น 65.9 จุด เพิ่มขึ้นจากเดือนมิ.ย.ที่ 62.7 จุด และนับเป็นการเพิ่มขึ้นครั้งแรกจากที่ลดลงต่อเนื่องในช่วง 4 เดือนที่ผ่านมา ทำให้ปิดตลาดราคาน้ำมันดิบที่ตลาดล่วงหน้า NYMEX ส่งมอบเดือนก.ย.ลดลง 1.72 ดอลลาร์หรือ 1.9% ปิดที่ 88.06 ดอลลาร์/บาร์เรลส่วนราคาน้ำมันดิบ BRENT ลดลง 1.28 ดอลลาร์หรือ 1.2% ปิดที่ 104.92 ดอลลาร์/บาร์เรล

ตลาดหุ้นหนักเกิ

ผลประกอบการบริษัทจดทะเบียนที่ประกาศออกมาสูงกว่าที่ตลาดคาดไว้ ทำให้เกิดแรงซื้อคืนในหลักทรัพย์นั้น (แสดงถึงความมั่นใจต่อทิศทางการฟื้นตัวต่อไปในอนาคต ทำให้การปรับตัวจะเกิดแรงซื้อคืนเพิ่มขึ้นอีก) ระยะสั้นมีแนวด้านสำคัญเส้นค่าเฉลี่ย 25 วัน 8,700 ผ่านขึ้นมาจะเป็นสัญญาณซื้อ คาดจะมีแรงขายทำกำไรระยะสั้นเนื่องจากดัชนีกลับตัวขึ้นมารอบรับปัจจัยบวกเรื่องการดำเนินการของเฟด และ ECB ไว้ล่วงหน้าในระดับมากแล้ว

ตลาดหุ้นยังเส็ง

นักลงทุนกลับเข้าซื้อคืนและเก็งกำไรมากขึ้นจากการคาดหวังต่อมาตรการกระตุ้นเศรษฐกิจ รวมทั้งการคาดการณ์เกี่ยวกับผลประกอบการบริษัทฯ ช่องกึ่งที่จะประกาศออกมาในสัปดาห์หน้า ในขณะที่ระยะสั้นการวิเคราะห์ด้านเทคนิคจะมีแนวด้านที่สำคัญ SMA200 วัน 19,870 และแนวด้าน 20,000 เป็นเป้าหมายในการกลับตัวขึ้นรอบนี้และเป็นแนวด้านเป้าหมายของการจบบรูปแบบ V-Shape มีความเป็นไปได้ที่จะเกิดแรงขายออกมา

Analyst – รัชชัย 02-6725993 tawatchai@globlex.co.th

วิลาสินี 02-6725937 wilasinee@globlex.co.th

อาทิตย์ 02-6725946 artit@globlex.co.th

NVDR Trading Value (Million Baht)
31/7/2012

| TOP 30 NVDR BUY | | | | | TOP 30 NVDR SELL | | | | |
|-----------------|------|------|-------|------|------------------|-----|------|-------|------|
| Company | Buy | Sell | Total | Net | Company | Buy | Sell | Total | Net |
| SLC-W3 | 21.1 | 0.1 | 21.2 | 21.0 | LH | 3.1 | 11.7 | 14.8 | -8.6 |
| QH | 14.3 | 0.3 | 14.6 | 14.0 | GEN-W3 | 0.0 | 5.9 | 6.9 | -4.9 |
| KMC-W2 | 6.6 | 0.0 | 6.6 | 6.6 | MINT | 0.0 | 5.0 | 7.1 | -2.9 |
| HEMRAJ | 8.9 | 2.4 | 11.3 | 6.5 | AP | 0.0 | 4.3 | 6.0 | -2.7 |
| EARTH | 5.0 | 0.0 | 5.0 | 5.0 | CPALL | 6.0 | 7.7 | 13.7 | -1.7 |
| KBANK | 4.6 | 0.9 | 5.5 | 3.8 | GSTEEL | 0.0 | 1.5 | 1.5 | -1.5 |
| TTW | 3.7 | 0.2 | 3.9 | 3.5 | HMPRO | 0.0 | 1.7 | 2.2 | -1.2 |
| KTB | 4.2 | 1.1 | 5.3 | 3.1 | TMB | 0.0 | 1.2 | 1.2 | -1.2 |
| BTS | 1.9 | 0.6 | 2.5 | 1.2 | ASP | 0.2 | 1.4 | 1.7 | -1.2 |
| LVT | 1.5 | 0.4 | 1.9 | 1.0 | SAMART | 0.0 | 1.0 | 1.0 | -1.0 |
| BECL | 1.6 | 0.7 | 2.3 | 0.9 | ITD | 0.0 | 0.9 | 0.9 | -0.9 |
| SCC | 1.4 | 0.5 | 2.0 | 0.9 | ML | 0.0 | 0.9 | 1.0 | -0.8 |
| RATCH | 0.8 | 0.0 | 0.9 | 0.8 | CPF | 0.6 | 1.3 | 1.9 | -0.8 |
| ADVANC | 0.8 | 0.1 | 0.9 | 0.6 | PJW | 0.0 | 0.8 | 0.8 | -0.7 |
| SOLAR | 0.6 | 0.0 | 0.6 | 0.6 | E | 0.0 | 0.8 | 0.9 | -0.7 |
| TCAP | 0.7 | 0.1 | 0.8 | 0.6 | ESTAR | 0.0 | 0.6 | 0.6 | -0.6 |
| KMC | 1.8 | 1.2 | 3.0 | 0.6 | KAMART | 0.3 | 0.9 | 1.1 | -0.6 |
| MAJOR | 0.7 | 0.2 | 0.8 | 0.5 | BBL | 0.0 | 1.0 | 1.4 | -0.5 |
| TTCL | 1.2 | 0.7 | 1.9 | 0.5 | GOLD | 0.0 | 0.5 | 0.5 | -0.5 |
| PM | 0.5 | 0.0 | 0.5 | 0.5 | RCI | 0.0 | 0.5 | 0.5 | -0.5 |
| CPN | 0.4 | 0.0 | 0.5 | 0.4 | TRUE | 0.0 | 0.5 | 0.6 | -0.5 |
| PTT | 0.6 | 0.2 | 0.8 | 0.4 | LPN | 0.4 | 0.8 | 1.2 | -0.5 |
| TWZ | 0.7 | 0.3 | 1.0 | 0.4 | TGPRO | 0.0 | 0.4 | 0.4 | -0.4 |
| PS | 0.4 | 0.0 | 0.4 | 0.3 | SIRI | 0.0 | 0.7 | 1.1 | -0.4 |
| BEC | 0.4 | 0.1 | 0.5 | 0.3 | CSL | 0.0 | 0.4 | 0.4 | -0.4 |
| BWG-W1 | 0.3 | 0.0 | 0.3 | 0.3 | SMIT | 0.0 | 0.4 | 0.4 | -0.4 |
| TRC | 0.3 | 0.0 | 0.3 | 0.3 | GOLD-W1 | 0.0 | 0.4 | 0.4 | -0.4 |
| SIMAT | 0.3 | 0.0 | 0.3 | 0.3 | BIGC | 0.0 | 0.4 | 0.5 | -0.4 |
| NMG | 1.0 | 0.7 | 1.7 | 0.3 | CGD | 0.0 | 0.4 | 0.4 | -0.4 |
| ROBINS | 0.3 | 0.1 | 0.4 | 0.3 | NOBLE | 0.0 | 0.3 | 0.3 | -0.3 |

Source : ตลาดหลักทรัพย์แห่งประเทศไทย

SBL Table

31/7/2012

| Date | TICKER/Sector | Recently Close | Recommend Short | Target Price | Recommendation |
|-----------|---------------|----------------|-----------------|--------------|----------------|
| 31/7/2012 | - | - | - | - | - |

Dividend Table

| Symbol | X-Date | Payment Date | Operation Period | Dividend (per share) | Unit | Type | Market / Industry / Sector |
|--------|----------|--------------|-------------------------|----------------------|------|------|----------------------------|
| DTAC | 1/8/2012 | 22/8/2012 | 01/01/2012 - 30/06/2012 | 2.27 | Baht | Cash | SET /TECH /ICT |
| KYE | 1/8/2012 | 23/8/2012 | 01/04/2011 - 31/03/2012 | 15.82 | Baht | Cash | SET /CONSUMP /HOME |
| PTTEP | 1/8/2012 | 22/8/2012 | 01/01/2012 - 30/06/2012 | 2.8 | Baht | Cash | SET /RESOURC /ENERG |
| PTL | 3/8/2012 | 23/8/2012 | 01/07/2011 - 31/03/2012 | 0.17 | Baht | Cash | SET /INDUS /PKG |
| TIW | 3/8/2012 | 24/8/2012 | 01/04/2011 - 31/03/2012 | 4.63 | Baht | Cash | SET /INDUS /STEEL |
| UOB8TF | 3/8/2012 | 24/8/2012 | 07/02/2012 - 30/06/2012 | 0.26 | Baht | Cash | SET /PROPCON /PFUND |
| SCC | 6/8/2012 | 23/8/2012 | 01/01/2012 - 30/06/2012 | 4.5 | Baht | Cash | SET /PROPCON /CONMAT |
| TPC | 6/8/2012 | 22/8/2012 | 01/01/2012 - 30/06/2012 | 0.75 | Baht | Cash | SET /INDUS /PETRO |
| DCC | 7/8/2012 | 23/8/2012 | 01/04/2012 - 30/06/2012 | 0.79 | Baht | Cash | SET /PROPCON /CONMAT |
| TTW | 7/8/2012 | 23/8/2012 | 01/01/2012 - 30/06/2012 | 0.22 | Baht | Cash | SET /RESOURC /ENERG |

SET NOTICE CALENDAR

1/8/2012

| | | |
|--------|-------------|-----------------|
| BLISS | ลูกหุ้นเข้า | 31,500 หุ้น |
| NIPPON | ลูกหุ้นเข้า | 61,000,000 หุ้น |

3/8/2012

| | | |
|-------|-------------|------------------|
| GLAND | ลูกหุ้นเข้า | 232,964,000 หุ้น |
|-------|-------------|------------------|

23/8/2012

| | |
|-----|----------|
| SMM | XW 4 : 1 |
|-----|----------|

18/9/2012

| | |
|----|--------------------|
| GL | XW 3 : 1 @0.10 บาท |
|----|--------------------|

Notes: PD = Payment Date SD = Subscript Date
 XN = Capital Return

XR = Rights for Common
 XW = Rights for Warrant

XT = Rights for Transferable Subscription Right
 XM = Excluding Meetings

Derivative Warrant Table 01 August 2012

| DW | Type of Option | DW Price | Stock Price | Price by Black Scholes Model | Status | Time to maturity | | | Gearing Ratio(x) | Premium | Exercise Price | Exercise Ratio | Expire Date | Last Trading Day | DW Issued(mn) | Implied Volatility | Cumulative Volume/ Outstanding Units |
|----------|----------------|----------|-------------|------------------------------|------------------|------------------|----|----|------------------|---------|----------------|----------------------|-------------|------------------|---------------|--------------------|--------------------------------------|
| | | | | | | y. | m. | d. | | | | | | | | | |
| ADVA01CB | Call | 1.76 | 200.00 | 1.75 | Out of the Money | 0 | 0 | 11 | 2.91 | 0.32% | 131.87000 | 1 : 39.07776@131.87 | 11 Aug 12 | 6 Aug 12 | 24.0 | 234.34% | 53.19% |
| ADVA01CC | Call | 1.17 | 200.00 | 0.92 | Out of the Money | 0 | 5 | 24 | 4.27 | 10.90% | 175.00000 | 1 : 40@170.95 | 23 Jan 13 | 22 Jan 13 | 60.0 | 67.92% | 14.59% |
| ADVA01PB | Put | 0.01 | 200.00 | 0.00 | Out of the Money | 0 | 0 | 11 | 682.40 | 14.67% | 170.95000 | 1 : 29.30832@170.95 | 11 Aug 12 | 6 Aug 12 | 25.0 | 63.88% | 9.25% |
| ADVA01PC | Put | 1.19 | 200.00 | 0.86 | Out of the Money | 0 | 5 | 24 | 4.20 | 11.30% | 225.00000 | 1 : 40@195 | 23 Jan 13 | 22 Jan 13 | 60.0 | 59.69% | 1.86% |
| ADVA08PA | Put | 0.81 | 200.00 | 0.42 | Out of the Money | 0 | 2 | 13 | 9.88 | 12.63% | 195.00000 | 1 : 25@195 | 13 Oct 12 | 8 Oct 12 | 12.4 | 64.27% | 30.57% |
| ADVA13CD | Call | 2.00 | 200.00 | 2.00 | Out of the Money | 0 | 0 | 17 | 2.56 | 0.13% | 122.11000 | 1 : 39.07776@195 | 17 Aug 12 | 9 Aug 12 | 23.0 | - | - |
| ADVA13CE | Call | - | 200.00 | 0.73 | - | 0 | 7 | 25 | - | - | 195.00000 | 1 : 40@195 | 26 Mar 13 | 19 Mar 13 | 31.3 | - | - |
| ADVA13PC | Put | 0.60 | 200.00 | 0.22 | Out of the Money | 0 | 7 | 25 | 6.67 | 27.50% | 175.00000 | 1 : 50@190 | 26 Mar 13 | 19 Mar 13 | 30.0 | 72.51% | 0.96% |
| ADVA16CA | Call | 1.64 | 200.00 | 1.21 | Out of the Money | 0 | 4 | 1 | 6.10 | 11.40% | 190.00000 | 1 : 20@190 | 1 Dec 12 | 26 Nov 12 | 20.0 | 71.12% | 8.11% |
| ADVA42CC | Call | 0.68 | 200.00 | 0.46 | Out of the Money | 0 | 7 | 15 | 3.68 | 17.20% | 180.00000 | 1 : 80@38 | 16 Mar 13 | 11 Mar 13 | 20.0 | 72.34% | 0.32% |
| AOT01CB | Call | 2.04 | 68.50 | 2.04 | Out of the Money | 0 | 0 | 11 | 2.24 | 0.15% | 38.00000 | 1 : 15@38 | 11 Aug 12 | 6 Aug 12 | 30.0 | 0.00% | 17.99% |
| AOT01CC | Call | 0.99 | 68.50 | 0.81 | Out of the Money | 0 | 5 | 24 | 3.46 | 7.74% | 54.00000 | 1 : 20@50 | 23 Jan 13 | 22 Jan 13 | 50.0 | 53.77% | 13.33% |
| AOT01PB | Put | 0.01 | 68.50 | 0.00 | Out of the Money | 0 | 0 | 11 | 685.00 | 27.15% | 50.00000 | 1 : 10@50 | 11 Aug 12 | 6 Aug 12 | 23.0 | 99.14% | 6.93% |
| AOT01PC | Put | 1.04 | 68.50 | 0.42 | Out of the Money | 0 | 5 | 24 | 6.59 | 17.37% | 67.00000 | 1 : 10@52 | 23 Jan 13 | 22 Jan 13 | 26.0 | 67.95% | 7.85% |
| AOT13CC | Call | 0.86 | 68.50 | 0.85 | Out of the Money | 0 | 2 | 13 | 3.98 | 1.02% | 52.00000 | 1 : 20@52 | 13 Oct 12 | 8 Oct 12 | 30.0 | 40.72% | 10.10% |
| AOT13PA | Put | 0.20 | 68.50 | 0.00 | Out of the Money | 0 | 1 | 19 | 34.25 | 29.93% | 50.00000 | 1 : 10@55 | 19 Sep 12 | 12 Sep 12 | 22.3 | - | - |
| AOT42CC | Call | 1.12 | 68.50 | 0.79 | Out of the Money | 0 | 7 | 15 | 3.06 | 12.99% | 55.00000 | 1 : 20@55 | 16 Mar 13 | 11 Mar 13 | 20.0 | 71.35% | 0.08% |
| BANP01CC | Call | 0.13 | 400.00 | 0.01 | Out of the Money | 0 | 2 | 30 | 30.77 | 35.75% | 530.00000 | 1 : 100@640 | 30 Oct 12 | 22 Oct 12 | 135.0 | 63.40% | 70.77% |
| BANP01PC | Put | 2.42 | 400.00 | 2.34 | Out of the Money | 0 | 2 | 30 | 1.65 | 0.50% | 640.00000 | 1 : 100@640 | 30 Oct 12 | 22 Oct 12 | 24.0 | 53.49% | 62.14% |
| BANP06CD | Call | 0.41 | 400.00 | 0.13 | Out of the Money | 0 | 6 | 8 | 9.76 | 32.75% | 490.00000 | 1 : 100@590 | 7 Feb 13 | 31 Jan 13 | 20.0 | 64.79% | 9.60% |
| BANP06PD | Put | 2.04 | 400.00 | 1.81 | Out of the Money | 0 | 6 | 8 | 1.96 | 3.50% | 590.00000 | 1 : 100@590 | 7 Feb 13 | 31 Jan 13 | 20.0 | 60.41% | 1.23% |
| BANP08CC | Call | 0.32 | 400.00 | 0.10 | Out of the Money | 0 | 3 | 11 | 10.42 | 22.10% | 450.00000 | 1 : 120@520 | 10 Nov 12 | 5 Nov 12 | 17.4 | 71.25% | 43.66% |
| BANP08PB | Put | 1.43 | 400.00 | 1.17 | Out of the Money | 0 | 3 | 11 | 2.80 | 5.75% | 520.00000 | 1 : 100@520 | 10 Nov 12 | 5 Nov 12 | 20.0 | 75.44% | 2.27% |
| BANP13CF | Call | 0.03 | 400.00 | 0.00 | Out of the Money | 0 | 2 | 17 | 67.73 | 55.29% | 615.27000 | 1 : 196.85039@450 | 17 Oct 12 | 10 Oct 12 | 28.9 | 77.54% | 25.24% |
| BANP13CG | Call | - | 400.00 | 0.27 | - | 0 | 7 | 25 | - | - | 450.00000 | 1 : 100@450 | 26 Mar 13 | 19 Mar 13 | 37.6 | - | - |
| BANP13PC | Put | 1.48 | 400.00 | 1.02 | Out of the Money | 0 | 7 | 25 | 2.70 | 12.00% | 500.00000 | 1 : 100@630.03 | 26 Mar 13 | 19 Mar 13 | 22.1 | 66.41% | 2.82% |
| BANP18CB | Call | 0.01 | 400.00 | 0.00 | Out of the Money | 0 | 1 | 15 | 203.16 | 58.00% | 630.03000 | 1 : 196.88581@630.03 | 15 Sep 12 | 10 Sep 12 | 45.0 | 72.78% | 28.79% |
| BANP42CD | Call | 0.04 | 400.00 | 0.00 | Out of the Money | 0 | 1 | 2 | 101.60 | 28.96% | 511.90000 | 1 : 98.4252@610.35 | 1 Sep 12 | 27 Aug 12 | 19.0 | 76.44% | 2.75% |
| BANP42PA | Put | 2.10 | 400.00 | 2.12 | In the Money | 0 | 1 | 2 | 1.94 | -0.91% | 610.35000 | 1 : 98.4252@610.35 | 1 Sep 12 | 27 Aug 12 | 25.0 | 0.00% | 3.61% |
| BAY01CC | Call | 0.97 | 32.50 | 0.87 | Out of the Money | 0 | 2 | 30 | 3.35 | 3.69% | 24.00000 | 1 : 10@30 | 30 Oct 12 | 22 Oct 12 | 40.0 | 61.20% | 39.70% |

The opinions and information presented in this report are those of the Globlex Securities Co. Ltd. Research Department. No representation or warranty in any form regarding the accuracy, completeness, correctness or fairness of opinions and information of this report is offered by Globlex Securities Co. Ltd. Globlex Securities Co. Ltd. Accepts no liability whatsoever for any loss arising from the use of this report or its contents. This report (in whole or in part) may not be reproduced or published without the express permission of Globlex Securities Co. Ltd.

Derivative Warrant Table 01 August 2012

| DW | Type of Option | DW Price | Stock Price | Price by Black Scholes Model | Status | Time to maturity | | | Gearing Ratio(x) | Premium | Exercise Price | Exercise Ratio | Expire Date | Last Trading Day | DW Issued(mn) | Implied Volatility | Cumulative Volume/ Outstanding Units |
|----------|----------------|----------|-------------|------------------------------|------------------|------------------|----|----|------------------|---------|----------------|--------------------|-------------|------------------|---------------|--------------------|--------------------------------------|
| | | | | | | y. | m. | d. | | | | | | | | | |
| BAY01PC | Put | 0.31 | 32.50 | 0.06 | Out of the Money | 0 | 2 | 30 | 10.48 | 17.23% | 30.00000 | 1 : 10@30 | 30 Oct 12 | 22 Oct 12 | 40.0 | 75.01% | 7.50% |
| BAY08CD | Call | 0.96 | 32.50 | 0.86 | Out of the Money | 0 | 3 | 14 | 4.23 | 3.63% | 26.00000 | 1 : 8@32 | 13 Nov 12 | 6 Nov 12 | 19.7 | 54.52% | 0.56% |
| BAY08PC | Put | 0.45 | 32.50 | 0.14 | Out of the Money | 0 | 3 | 14 | 7.22 | 15.38% | 32.00000 | 1 : 10@32 | 13 Nov 12 | 6 Nov 12 | 19.5 | 73.98% | 1.32% |
| BAY18CB | Call | 0.74 | 32.50 | 0.82 | In the Money | 0 | 1 | 15 | 4.45 | -2.20% | 24.48000 | 1 : 9.87273@28 | 15 Sep 12 | 10 Sep 12 | 20.0 | - | - |
| BAY42CD | Call | 0.45 | 32.50 | 0.29 | Out of the Money | 0 | 7 | 15 | 3.61 | 13.85% | 28.00000 | 1 : 20@28 | 16 Mar 13 | 11 Mar 13 | 20.0 | 67.31% | 0.50% |
| BBL08CB | Call | 0.75 | 196.00 | 0.49 | Out of the Money | 0 | 3 | 24 | 6.53 | 9.69% | 185.00000 | 1 : 40@170 | 24 Nov 12 | 19 Nov 12 | 20.0 | 51.41% | 27.10% |
| BBL08PB | Put | 0.79 | 196.00 | 0.12 | Out of the Money | 0 | 3 | 24 | 12.41 | 21.33% | 170.00000 | 1 : 20@170 | 24 Nov 12 | 19 Nov 12 | 17.5 | 68.75% | 1.85% |
| BBL13CC | Call | 0.93 | 196.00 | 0.75 | Out of the Money | 0 | 2 | 30 | 4.31 | 5.63% | 161.51000 | 1 : 48.94763@171.3 | 30 Oct 12 | 22 Oct 12 | 26.8 | 61.18% | 14.62% |
| BBL13PB | Put | 0.28 | 196.00 | 0.04 | Out of the Money | 0 | 2 | 30 | 14.30 | 19.59% | 171.30000 | 1 : 48.94763@171.3 | 30 Oct 12 | 22 Oct 12 | 30.0 | 72.05% | 3.81% |
| BBL18CB | Call | 0.56 | 196.00 | 0.43 | Out of the Money | 0 | 3 | 1 | 7.00 | 6.12% | 180.00000 | 1 : 50@165 | 31 Oct 12 | 24 Oct 12 | 20.0 | 49.21% | 12.13% |
| BBL18PA | Put | 0.23 | 196.00 | 0.02 | Out of the Money | 0 | 3 | 1 | 17.04 | 21.68% | 165.00000 | 1 : 50@165 | 31 Oct 12 | 24 Oct 12 | 20.0 | 67.81% | 0.50% |
| BBL42CD | Call | 1.49 | 196.00 | 1.22 | Out of the Money | 0 | 4 | 22 | 3.29 | 6.94% | 150.00000 | 1 : 40@200 | 22 Dec 12 | 17 Dec 12 | 20.0 | 62.02% | 2.66% |
| BBL42PA | Put | 0.79 | 196.00 | 0.36 | Out of the Money | 0 | 4 | 22 | 6.20 | 14.08% | 200.00000 | 1 : 40@200 | 22 Dec 12 | 17 Dec 12 | 20.0 | 62.05% | 0.01% |
| BCP01CC | Call | 0.57 | 22.20 | 0.33 | Out of the Money | 0 | 4 | 14 | 4.87 | 10.63% | 20.00000 | 1 : 8@25.5 | 14 Dec 12 | 6 Dec 12 | 50.0 | 60.89% | 6.25% |
| BCP01PC | Put | 1.09 | 22.20 | 0.61 | Out of the Money | 0 | 4 | 14 | 4.07 | 9.68% | 25.50000 | 1 : 5@25.5 | 14 Dec 12 | 6 Dec 12 | 25.0 | 70.08% | 3.12% |
| BCP08CB | Call | 0.61 | 22.20 | 0.29 | Out of the Money | 0 | 3 | 24 | 6.07 | 11.08% | 21.00000 | 1 : 6@21 | 24 Nov 12 | 19 Nov 12 | 19.6 | 56.29% | 4.05% |
| BCP42CC | Call | 0.52 | 22.20 | 0.22 | Out of the Money | 0 | 7 | 15 | 4.27 | 18.02% | 21.00000 | 1 : 10@21 | 16 Mar 13 | 11 Mar 13 | 20.0 | 64.85% | 0.45% |
| BEC01CA | Call | 0.84 | 56.25 | 0.71 | Out of the Money | 0 | 4 | 14 | 3.35 | 9.87% | 45.00000 | 1 : 20@64.22 | 14 Dec 12 | 6 Dec 12 | 44.4 | 80.65% | 0.65% |
| BGH01CA | Call | 1.78 | 99.25 | 1.79 | Out of the Money | 0 | 1 | 8 | 2.82 | 0.14% | 64.22000 | 1 : 19.75894@64.22 | 8 Sep 12 | 3 Sep 12 | 24.0 | 47.27% | 95.69% |
| BGH01PA | Put | 0.60 | 99.25 | 0.23 | Out of the Money | 0 | 1 | 8 | 11.03 | 8.31% | 100.00000 | 1 : 15@71.14 | 8 Sep 12 | 3 Sep 12 | 20.0 | 72.97% | 37.69% |
| BGH13CC | Call | 1.60 | 99.25 | 1.45 | Out of the Money | 0 | 2 | 17 | 3.14 | 3.53% | 71.14000 | 1 : 19.75894@71.14 | 17 Oct 12 | 10 Oct 12 | 28.9 | 80.43% | 0.77% |
| BGH13CD | Call | - | 99.25 | 0.54 | - | 0 | 6 | 15 | - | - | 95.00000 | 1 : 20@77.06 | 14 Feb 13 | 7 Feb 13 | 33.6 | - | - |
| BGH13PA | Put | 0.30 | 99.25 | 0.00 | Out of the Money | 0 | 1 | 27 | 33.48 | 25.34% | 77.06000 | 1 : 9.88045@77.06 | 27 Sep 12 | 20 Sep 12 | 15.0 | - | - |
| BGH42CB | Call | 1.52 | 99.25 | 0.29 | Out of the Money | 0 | 7 | 15 | 1.63 | 56.98% | 95.00000 | 1 : 40@57 | 16 Mar 13 | 11 Mar 12 | 20.0 | 67.90% | 3.87% |
| BH01CA | Call | 1.27 | 76.00 | 1.03 | Out of the Money | 0 | 4 | 14 | 2.99 | 8.42% | 57.00000 | 1 : 20@57 | 14 Dec 12 | 6 Dec 12 | 35.1 | 90.24% | 12.88% |
| BH13CB | Call | 3.06 | 76.00 | 3.14 | In the Money | 0 | 2 | 20 | 2.48 | -0.53% | 45.00000 | 1 : 10@77 | 20 Oct 12 | 15 Oct 12 | 26.1 | 104.60% | 1.00% |
| BH13CC | Call | - | 76.00 | 0.45 | - | 0 | 6 | 15 | - | - | 77.00000 | 1 : 20@77 | 14 Feb 13 | 7 Feb 13 | 46.8 | - | - |
| BIGC01CB | Call | 1.71 | 179.50 | 1.58 | Out of the Money | 0 | 1 | 8 | 3.54 | 2.55% | 133.39000 | 1 : 29.63841@200 | 8 Sep 12 | 3 Sep 12 | 20.0 | 110.10% | 264.47% |
| BIGC13CA | Call | 0.51 | 179.50 | 0.28 | Out of the Money | 0 | 4 | 25 | 7.04 | 25.63% | 200.00000 | 1 : 50@200 | 25 Dec 12 | 18 Dec 12 | 29.5 | 75.57% | 9.34% |
| BIGC42CA | Call | 2.16 | 179.50 | 2.12 | Out of the Money | 0 | 1 | 2 | 4.20 | 0.85% | 138.33000 | 1 : 19.76285@200 | 1 Sep 12 | 27 Aug 12 | 14.0 | 57.98% | 3.49% |

The opinions and information presented in this report are those of the Globlex Securities Co. Ltd. Research Department. No representation or warranty in any form regarding the accuracy, completeness, correctness or fairness of opinions and information of this report is offered by Globlex Securities Co. Ltd. Globlex Securities Co. Ltd. accepts no liability whatsoever for any loss arising from the use of this report or its contents. This report (in whole or in part) may not be reproduced or published without the express permission of Globlex Securities Co. Ltd.

Derivative Warrant Table 01 August 2012

| DW | Type of Option | DW Price | Stock Price | Price by Black Scholes Model | Status | Time to maturity y. m. d. | Gearing Ratio(x) | Premium | Exercise Price | Exercise Ratio | Expire Date | Last Trading Day | DW Issued(mn) | Implied Volatility | Cumulative Volume/ Outstanding Units |
|----------|----------------|----------|-------------|------------------------------|------------------|------------------------------|------------------|---------|----------------|--------------------|-------------|------------------|---------------|--------------------|---|
| BIGC42CB | Call | 0.38 | 179.50 | 0.19 | Out of the Money | 0 7 15 | 4.72 | 32.59% | 200.00000 | 1 : 100@200 | 16 Mar 13 | 11 Mar 13 | 20.0 | 81.48% | 2.01% |
| BJC01CA | Call | 1.30 | 39.75 | 1.32 | In the Money | 0 0 11 | 3.09 | -0.42% | 26.72000 | 1 : 9.89511@35 | 11 Aug 12 | 6 Aug 12 | 25.0 | 0.00% | 70.55% |
| BJC01CB | Call | 0.69 | 39.75 | 0.50 | Out of the Money | 0 5 24 | 3.84 | 14.09% | 35.00000 | 1 : 15@35 | 23 Jan 13 | 22 Jan 13 | 64.0 | 71.12% | 1.91% |
| BJC06CA | Call | 0.57 | 39.75 | 0.41 | Out of the Money | 0 4 7 | 4.65 | 12.70% | 36.25000 | 1 : 15@44.25 | 7 Dec 12 | 29 Nov 12 | 20.0 | 71.53% | 5.33% |
| BJC06PA | Put | 0.70 | 39.75 | 0.43 | Out of the Money | 0 4 7 | 3.79 | 15.09% | 44.25000 | 1 : 15@44.25 | 7 Dec 12 | 29 Nov 12 | 20.0 | 84.24% | 0.01% |
| BJC13CA | Call | 1.22 | 39.75 | 1.24 | Out of the Money | 0 1 27 | 3.29 | 0.06% | 27.70000 | 1 : 9.89511@44.69 | 27 Sep 12 | 20 Sep 12 | 30.0 | 0.00% | 1.74% |
| BLA01CB | Call | 0.24 | 46.25 | 0.13 | Out of the Money | 0 1 8 | 9.70 | 6.94% | 44.69000 | 1 : 19.86492@44.69 | 8 Sep 12 | 3 Sep 12 | 44.4 | 70.05% | 22.47% |
| BLA01PA | Put | 0.73 | 46.25 | 0.41 | Out of the Money | 0 1 8 | 6.34 | 7.68% | 50.00000 | 1 : 10@44 | 8 Sep 12 | 3 Sep 12 | 20.0 | - | - |
| BLA08CB | Call | 0.84 | 46.25 | 0.35 | Out of the Money | 0 3 11 | 4.59 | 16.93% | 44.00000 | 1 : 12@44 | 10 Nov 12 | 5 Nov 12 | 20.0 | - | - |
| BLA13CC | Call | 0.68 | 46.25 | 0.34 | Out of the Money | 0 2 13 | 6.85 | 11.23% | 44.69000 | 1 : 9.93246@50 | 13 Oct 12 | 8 Oct 12 | 27.1 | 73.76% | 1.29% |
| BLA13PB | Put | 1.05 | 46.25 | 0.51 | Out of the Money | 0 4 28 | 4.40 | 14.59% | 50.00000 | 1 : 10@50 | 28 Dec 12 | 21 Dec 12 | 23.9 | 72.10% | 0.25% |
| BTS01CA | Call | 0.39 | 0.80 | 0.23 | Out of the Money | 0 4 14 | 4.10 | 11.88% | 0.70000 | 1 : 0.5@34 | 14 Dec 12 | 6 Dec 12 | 60.0 | 72.81% | 0.54% |
| CPAL01CC | Call | 0.29 | 34.00 | 0.13 | Out of the Money | 0 2 30 | 7.82 | 12.79% | 34.00000 | 1 : 15@34 | 30 Oct 12 | 22 Oct 12 | 60.0 | 63.76% | 26.81% |
| CPAL01PC | Put | 1.14 | 34.00 | 0.97 | Out of the Money | 0 2 22 | 2.98 | 4.12% | 44.00000 | 1 : 10@32 | 22 Oct 12 | 6 Jun 12 | 20.0 | 78.48% | 12.50% |
| CPAL06CA | Call | 0.42 | 34.00 | 0.27 | Out of the Money | 0 6 8 | 5.40 | 12.65% | 32.00000 | 1 : 15@32 | 7 Feb 13 | 31 Jan 13 | 20.0 | 60.37% | 3.80% |
| CPAL06PA | Put | 0.61 | 34.00 | 0.36 | Out of the Money | 0 6 1 | 3.72 | 12.21% | 39.00000 | 1 : 15@60 | 31 Jan 13 | 9 Oct 12 | 20.0 | 68.03% | 0.24% |
| CPAL08CC | Call | 0.02 | 34.00 | 0.00 | Out of the Money | 0 2 16 | 113.33 | 77.35% | 60.00000 | 1 : 15@60 | 16 Oct 12 | 9 Oct 12 | 20.0 | 74.18% | 2.10% |
| CPAL08PA | Put | 3.16 | 34.00 | - | Out of the Money | 0 -1 # | 0.90 | 5.65% | 70.00000 | 1 : 12@34 | 6 Jun 12 | 9 Oct 12 | 20.0 | - | 0.34% |
| CPAL13CC | Call | 0.62 | 34.00 | 0.26 | Out of the Money | 0 4 29 | 5.48 | 18.24% | 34.00000 | 1 : 10@34 | 29 Dec 12 | 24 Dec 12 | 30.0 | 69.39% | 0.67% |
| CPAL42CD | Call | 0.89 | 34.00 | 0.56 | Out of the Money | 0 7 8 | 3.82 | 14.41% | 30.00000 | 1 : 10@36 | 9 Mar 13 | 4 Mar 13 | 20.0 | 65.59% | 1.66% |
| CPF01CC | Call | 0.20 | 33.25 | 0.09 | Out of the Money | 0 2 30 | 11.08 | 17.29% | 36.00000 | 1 : 15@36 | 30 Oct 12 | 22 Oct 12 | 250.0 | 56.49% | 57.43% |
| CPF01PC | Put | 1.55 | 33.25 | 1.43 | Out of the Money | 0 2 30 | 2.15 | 2.26% | 48.00000 | 1 : 10@33.5 | 30 Oct 12 | 22 Oct 12 | 22.0 | 86.63% | 7.10% |
| CPF08CE | Call | 0.35 | 33.25 | 0.23 | Out of the Money | 0 1 29 | 12.05 | 9.05% | 33.50000 | 1 : 7.88221@33.5 | 29 Sep 12 | 24 Sep 12 | 20.0 | 45.62% | 114.55% |
| CPF08PB | Put | 0.96 | 33.25 | 0.68 | Out of the Money | 0 1 29 | 4.39 | 7.18% | 38.43000 | 1 : 7.88221@34 | 29 Sep 12 | 24 Sep 12 | 20.0 | 85.30% | 4.53% |
| CPF13CC | Call | 0.57 | 33.25 | 0.33 | Out of the Money | 0 6 20 | 5.83 | 19.40% | 34.00000 | 1 : 10@34 | 19 Feb 13 | 12 Feb 13 | 50.0 | 57.74% | 2.46% |
| CPF13PB | Put | 0.50 | 33.25 | 0.21 | Out of the Money | 0 2 17 | 6.75 | 14.06% | 33.50000 | 1 : 9.85319@40 | 17 Oct 12 | 10 Oct 12 | 30.0 | 85.22% | 0.78% |
| CPF16CA | Call | 0.58 | 33.25 | 0.19 | Out of the Money | 0 4 1 | 14.33 | 27.28% | 40.00000 | 1 : 4@40 | 1 Dec 12 | 26 Nov 12 | 20.0 | 56.90% | 4.34% |
| CPF42CC | Call | 0.60 | 33.25 | 0.43 | Out of the Money | 0 4 22 | 5.54 | 11.28% | 31.00000 | 1 : 10@46 | 22 Dec 12 | 17 Dec 12 | 20.0 | 49.38% | 33.48% |
| CPF42PA | Put | 1.45 | 33.25 | 1.23 | Out of the Money | 0 4 22 | 2.29 | 5.26% | 46.00000 | 1 : 10@46 | 22 Dec 12 | 17 Dec 12 | 20.0 | 68.56% | 0.07% |
| CPN42CC | Call | 0.69 | 49.00 | 0.32 | Out of the Money | 0 7 15 | 3.55 | 20.00% | 45.00000 | 1 : 20@58.59 | 16 Mar 13 | 11 Mar 13 | 20.0 | 81.60% | 15.08% |

The opinions and information presented in this report are those of the Globlex Securities Co. Ltd. Research Department. No representation or warranty in any form regarding the accuracy, completeness, correctness or fairness of opinions and information of this report is offered by Globlex Securities Co. Ltd. Globlex Securities Co. Ltd. accepts no liability whatsoever for any loss arising from the use of this report or its contents. This report (in whole or in part) may not be reproduced or published without the express permission of Globlex Securities Co. Ltd.

Derivative Warrant Table 01 August 2012

| DW | Type of Option | DW Price | Stock Price | Price by Black Scholes Model | Status | Time to maturity | | | Gearing Ratio(x) | Premium | Exercise Price | Exercise Ratio | Expire Date | Last Trading Day | DW Issued(mn) | Implied Volatility | Cumulative Volume/ Outstanding Units |
|----------|----------------|----------|-------------|------------------------------|------------------|------------------|----|----|------------------|---------|----------------|-------------------|-------------|------------------|---------------|--------------------|--------------------------------------|
| | | | | | | y. | m. | d. | | | | | | | | | |
| DCC13CA | Call | 0.24 | 51.75 | 0.05 | Out of the Money | 0 | 1 | 11 | 22.08 | 17.75% | 58.59000 | 1 : 9.76467@58.59 | 11 Sep 12 | 4 Sep 12 | 21.8 | 68.07% | 19.58% |
| DELT13CB | Call | 0.57 | 23.80 | 0.28 | Out of the Money | 0 | 2 | 13 | 8.35 | 12.82% | 24.00000 | 1 : 5@70 | 13 Oct 12 | 8 Oct 12 | 24.4 | 70.84% | 74.42% |
| DTAC01CC | Call | 0.98 | 82.25 | 0.75 | Out of the Money | 0 | 4 | 14 | 4.20 | 8.94% | 70.00000 | 1 : 20@70 | 14 Dec 12 | 6 Dec 12 | 60.0 | 71.54% | 62.51% |
| DTAC01PC | Put | 1.76 | 82.25 | 1.08 | Out of the Money | 0 | 4 | 14 | 4.67 | 11.98% | 90.00000 | 1 : 10@72 | 14 Dec 12 | 6 Dec 12 | 24.0 | 66.13% | 25.56% |
| DTAC06CA | Call | 0.95 | 82.25 | 0.67 | Out of the Money | 0 | 4 | 7 | 4.33 | 10.64% | 72.00000 | 1 : 20@72 | 7 Dec 12 | 29 Nov 12 | 20.0 | 72.97% | 0.11% |
| DTAC06PA | Put | 0.81 | 82.25 | 0.47 | Out of the Money | 0 | 4 | 7 | 5.08 | 12.71% | 88.00000 | 1 : 20@72 | 7 Dec 12 | 29 Nov 12 | 20.0 | 67.73% | 0.29% |
| DTAC08CD | Call | 1.26 | 82.25 | 0.87 | Out of the Money | 0 | 3 | 27 | 4.35 | 10.52% | 72.00000 | 1 : 15@72 | 27 Nov 12 | 20 Nov 12 | 17.7 | 78.92% | 0.10% |
| DTAC13CC | Call | 1.02 | 82.25 | 0.83 | Out of the Money | 0 | 2 | 17 | 4.10 | 5.71% | 66.88000 | 1 : 19.66955@70 | 17 Oct 12 | 10 Oct 12 | 30.0 | 78.85% | 1.67% |
| DTAC42CC | Call | 0.94 | 82.25 | 0.67 | Out of the Money | 0 | 7 | 15 | 3.50 | 13.68% | 70.00000 | 1 : 25@70 | 16 Mar 13 | 11 Mar 13 | 20.0 | 68.60% | 1.02% |
| EGCO01CA | Call | 0.68 | 109.50 | 0.30 | Out of the Money | 0 | 5 | 24 | 5.37 | 14.52% | 105.00000 | 1 : 30@9.16 | 23 Jan 13 | 22 Jan 13 | 28.5 | 58.77% | 0.81% |
| ESSO01CB | Call | 0.22 | 10.30 | 0.23 | In the Money | 0 | 0 | 11 | 9.40 | -0.43% | 9.16000 | 1 : 4.97834@9.16 | 11 Aug 12 | 6 Aug 12 | 150.0 | 16.41% | 45.28% |
| ESSO01CC | Call | 0.52 | 10.30 | 0.33 | Out of the Money | 0 | 5 | 24 | 3.96 | 14.56% | 9.20000 | 1 : 5@13.5 | 23 Jan 13 | 22 Jan 13 | 70.0 | 73.56% | 0.80% |
| ESSO01PC | Put | 1.10 | 10.30 | 0.78 | Out of the Money | 0 | 5 | 24 | 2.34 | 11.65% | 13.50000 | 1 : 4@13.5 | 23 Jan 13 | 22 Jan 13 | 26.0 | 80.34% | 0.00% |
| ESSO03CB | Call | 0.13 | 10.30 | 0.02 | Out of the Money | 0 | 4 | 15 | 7.96 | 37.23% | 12.84000 | 1 : 9.9569@12.94 | 15 Dec 12 | 7 Dec 12 | 60.0 | 75.60% | 0.20% |
| ESSO13CC | Call | 0.16 | 10.30 | 0.02 | Out of the Money | 0 | 2 | 30 | 16.16 | 31.82% | 12.94000 | 1 : 3.98279@12.94 | 30 Oct 12 | 22 Oct 12 | 28.4 | 72.84% | 2.22% |
| ESSO18CB | Call | 0.03 | 10.30 | 0.00 | Out of the Money | 0 | 1 | 20 | 43.10 | 30.86% | 13.24000 | 1 : 7.96552@7.5 | 20 Sep 12 | 13 Sep 12 | 20.0 | 74.32% | 22.06% |
| ESSO42CC | Call | 0.73 | 10.30 | 0.61 | Out of the Money | 0 | 6 | 17 | 2.82 | 8.25% | 7.50000 | 1 : 5@7.5 | 16 Feb 13 | 11 Feb 16 | 30.0 | 73.02% | 0.08% |
| ESSO42PA | Put | 0.97 | 10.30 | 0.92 | Out of the Money | 0 | 1 | 2 | 2.13 | 1.83% | 14.94000 | 1 : 4.97834@57 | 1 Sep 12 | 27 Aug 12 | 30.0 | 89.86% | 4.81% |
| GLOW01CA | Call | 0.69 | 60.75 | 0.26 | Out of the Money | 0 | 4 | 14 | 4.40 | 16.54% | 57.00000 | 1 : 20@57 | 14 Dec 12 | 6 Dec 12 | 35.1 | 82.36% | 8.72% |
| HEMR01CA | Call | 0.73 | 2.98 | 0.36 | Out of the Money | 0 | 5 | 24 | 4.08 | 14.43% | 2.68000 | 1 : 1@2.8 | 23 Jan 13 | 16 Jan 13 | 37.3 | 73.11% | 1.20% |
| HEMR13CA | Call | 0.63 | 2.98 | 0.24 | Out of the Money | 0 | 4 | 25 | 4.73 | 15.10% | 2.80000 | 1 : 1@2.8 | 25 Dec 12 | 18 Dec 12 | 30.0 | 72.61% | 0.13% |
| HMPR01CB | Call | 0.29 | 11.50 | 0.03 | Out of the Money | 0 | 2 | 30 | 7.93 | 16.96% | 12.00000 | 1 : 5@15 | 30 Oct 12 | 22 Oct 12 | 40.0 | 76.34% | 23.68% |
| HMPR01PA | Put | 1.03 | 11.50 | 0.84 | Out of the Money | 0 | 2 | 30 | 2.79 | 5.39% | 15.00000 | 1 : 4@15 | 30 Oct 12 | 22 Oct 12 | 22.0 | 73.17% | 2.34% |
| HMPR13CC | Call | 0.56 | 11.50 | 0.19 | Out of the Money | 0 | 2 | 20 | 5.19 | 13.87% | 10.88000 | 1 : 3.9546@11.17 | 20 Oct 12 | 19 Oct 12 | 30.0 | 89.95% | 0.10% |
| HMPR13PA | Put | 0.24 | 11.50 | 0.02 | Out of the Money | 0 | 1 | 11 | 12.12 | 11.12% | 11.17000 | 1 : 3.9546@11.17 | 11 Sep 12 | 4 Sep 12 | 30.0 | 68.71% | 0.73% |
| INTU01CA | Call | 0.83 | 62.75 | 0.61 | Out of the Money | 0 | 5 | 24 | 3.78 | 9.32% | 52.00000 | 1 : 20@65 | 23 Jan 13 | 16 Jan 13 | 60.0 | 69.74% | 49.39% |
| INTU01PA | Put | 1.23 | 62.75 | 0.45 | Out of the Money | 0 | 5 | 24 | 5.10 | 16.02% | 65.00000 | 1 : 10@65 | 23 Jan 13 | 16 Jan 13 | 30.0 | 64.12% | 2.56% |
| INTU06CA | Call | - | 62.75 | 0.69 | - | 0 | 8 | 4 | - | - | 55.00000 | 1 : 15@67 | 4 Apr 13 | 28 Mar 13 | 20.0 | - | - |
| INTU06PA | Put | - | 62.75 | 0.41 | - | 0 | 8 | 4 | - | - | 67.00000 | 1 : 15@67 | 4 Apr 13 | 28 Mar 13 | 20.0 | - | - |
| INTU13CA | Call | 0.79 | 62.75 | 0.46 | Out of the Money | 0 | 4 | 25 | 3.97 | 12.83% | 55.00000 | 1 : 20@50 | 25 Dec 12 | 18 Dec 12 | 29.8 | 82.59% | 54.62% |

The opinions and information presented in this report are those of the Globlex Securities Co. Ltd. Research Department. No representation or warranty in any form regarding the accuracy, completeness, correctness or fairness of opinions and information of this report is offered by Globlex Securities Co. Ltd. Globlex Securities Co. Ltd. accepts no liability whatsoever for any loss arising from the use of this report or its contents. This report (in whole or in part) may not be reproduced or published without the express permission of Globlex Securities Co. Ltd.

Derivative Warrant Table 01 August 2012

| DW | Type of Option | DW Price | Stock Price | Price by Black Scholes Model | Status | Time to maturity | | | Gearing Ratio(x) | Premium | Exercise Price | Exercise Ratio | Expire Date | Last Trading Day | DW Issued(mn) | Implied Volatility | Cumulative Volume/ Outstanding Units |
|----------|----------------|----------|-------------|------------------------------|------------------|------------------|----|----|------------------|---------|----------------|---------------------|-------------|------------------|---------------|--------------------|--------------------------------------|
| | | | | | | y. | m. | d. | | | | | | | | | |
| INTU42CA | Call | 1.00 | 62.75 | 0.71 | Out of the Money | 0 | 7 | 8 | 3.14 | 11.55% | 50.00000 | 1 : 20@50 | 9 Mar 13 | 4 Mar 12 | 20.0 | 75.32% | 0.77% |
| INTU42PA | Put | 0.79 | 62.75 | 0.40 | Out of the Money | 0 | 7 | 8 | 3.97 | 13.63% | 70.00000 | 1 : 20@3.77 | 9 Mar 13 | 4 Mar 12 | 20.0 | 60.97% | 0.03% |
| IRPC01CB | Call | 0.02 | 3.62 | 0.01 | Out of the Money | 0 | 0 | 11 | 91.27 | 5.24% | 3.77000 | 1 : 1.98306@3.77 | 11 Aug 12 | 6 Aug 12 | 110.0 | 57.89% | 21.85% |
| IRPC01CC | Call | 0.59 | 3.62 | 0.36 | Out of the Money | 0 | 5 | 24 | 4.09 | 12.85% | 3.20000 | 1 : 1.5@5.8 | 23 Jan 13 | 22 Jan 13 | 70.0 | 68.39% | 0.74% |
| IRPC01PA | Put | 1.12 | 3.62 | 1.09 | Out of the Money | 0 | 0 | 11 | 1.62 | 1.66% | 5.80000 | 1 : 2@5.8 | 11 Aug 12 | 6 Aug 12 | 20.0 | 209.48% | 1.66% |
| IRPC01PB | Put | 1.14 | 3.62 | 0.66 | Out of the Money | 0 | 5 | 24 | 3.18 | 12.71% | 4.30000 | 1 : 1@3.77 | 23 Jan 13 | 22 Jan 13 | 30.0 | 72.51% | 0.00% |
| IRPC13CC | Call | 0.07 | 3.62 | 0.02 | Out of the Money | 0 | 0 | 22 | 26.08 | 7.98% | 3.77000 | 1 : 1.98306@3.77 | 22 Aug 12 | 15 Aug 12 | 27.6 | 57.61% | 0.00% |
| IRPC13CD | Call | - | 3.62 | 0.31 | - | 0 | 7 | 22 | - | - | 3.65000 | 1 : 1@4.1 | 23 Mar 13 | 18 Mar 13 | 50.0 | - | - |
| IRPC13PB | Put | 0.55 | 3.62 | 0.26 | Out of the Money | 0 | 7 | 22 | 3.29 | 17.13% | 4.10000 | 1 : 2@4.1 | 23 Mar 13 | 18 Mar 13 | 30.0 | 70.32% | 0.67% |
| IRPC18CB | Call | 0.03 | 3.62 | 0.00 | Out of the Money | 0 | 1 | 18 | 60.33 | 32.04% | 4.72000 | 1 : 2@35.49 | 18 Sep 12 | 11 Sep 12 | 20.0 | 63.54% | 3.18% |
| IVL01CE | Call | 0.09 | 29.75 | 0.02 | Out of the Money | 0 | 1 | 8 | 22.36 | 23.77% | 35.49000 | 1 : 14.78415@35.49 | 8 Sep 12 | 3 Sep 12 | 300.0 | 87.04% | 54.15% |
| IVL01CF | Call | 0.58 | 29.75 | 0.40 | Out of the Money | 0 | 5 | 24 | 3.42 | 16.64% | 26.00000 | 1 : 15@47.31 | 23 Jan 13 | 22 Jan 13 | 160.0 | 79.96% | 1.26% |
| IVL01PE | Put | 1.82 | 29.75 | 1.76 | Out of the Money | 0 | 1 | 8 | 1.66 | 1.28% | 47.31000 | 1 : 9.85707@47.31 | 8 Sep 12 | 3 Sep 12 | 20.0 | 126.44% | 3.84% |
| IVL06CB | Call | 1.00 | 29.75 | 0.73 | Out of the Money | 0 | 8 | 4 | 2.98 | 17.65% | 25.00000 | 1 : 10@30 | 4 Apr 13 | 28 Mar 13 | 20.0 | 69.88% | 16.03% |
| IVL06PB | Put | - | 29.75 | 0.41 | - | 0 | 8 | 4 | - | - | 30.00000 | 1 : 10@30 | 4 Apr 13 | 28 Mar 13 | 20.0 | - | - |
| IVL08CD | Call | 0.22 | 29.75 | 0.10 | Out of the Money | 0 | 2 | 13 | 9.15 | 20.28% | 32.53000 | 1 : 14.78571@35.49 | 13 Oct 12 | 8 Oct 12 | 20.4 | 78.01% | 17.24% |
| IVL08PB | Put | 1.23 | 29.75 | 0.79 | Out of the Money | 0 | 2 | 13 | 3.07 | 13.31% | 35.49000 | 1 : 7.88571@35.49 | 13 Oct 12 | 8 Oct 12 | 20.5 | - | - |
| IVL13CE | Call | 0.07 | 29.75 | 0.02 | Out of the Money | 0 | 2 | 25 | 21.56 | 37.18% | 39.43000 | 1 : 19.71609@29 | 25 Oct 12 | 17 Oct 12 | 249.2 | 71.13% | 88.35% |
| IVL13CF | Call | - | 29.75 | 0.46 | - | 0 | 6 | 20 | - | - | 29.00000 | 1 : 10@29 | 19 Feb 13 | 12 Feb 13 | 70.0 | - | - |
| IVL13PC | Put | 0.80 | 29.75 | 0.73 | Out of the Money | 0 | 2 | 25 | 1.89 | 3.91% | 44.36000 | 1 : 19.71609@30 | 25 Oct 12 | 17 Oct 12 | 28.9 | 95.02% | 0.76% |
| IVL18CD | Call | 0.15 | 29.75 | 0.08 | Out of the Money | 0 | 1 | 28 | 7.93 | 13.45% | 30.00000 | 1 : 25@30 | 28 Sep 12 | 21 Sep 12 | 20.0 | 75.70% | 34.83% |
| IVL18PA | Put | 0.30 | 29.75 | 0.18 | Out of the Money | 0 | 1 | 28 | 4.02 | 12.21% | 33.51000 | 1 : 24.64286@24 | 28 Sep 12 | 21 Sep 12 | 20.0 | 107.87% | 0.01% |
| IVL42CD | Call | 1.01 | 29.75 | 0.77 | Out of the Money | 0 | 7 | 8 | 2.95 | 14.62% | 24.00000 | 1 : 10@24 | 9 Mar 13 | 4 Mar 13 | 20.0 | 73.83% | 5.31% |
| IVL42PB | Put | 1.43 | 29.75 | 1.08 | Out of the Money | 0 | 7 | 8 | 2.08 | 13.61% | 40.00000 | 1 : 10@98.69 | 9 Mar 13 | 4 Mar 13 | 20.0 | 81.49% | 0.01% |
| KBAN01CB | Call | 3.10 | 175.00 | 3.10 | Out of the Money | 0 | 0 | 11 | 2.29 | 0.10% | 98.69000 | 1 : 24.67308@98.69 | 11 Aug 12 | 6 Aug 12 | 30.0 | 0.00% | 6.58% |
| KBAN01CC | Call | 1.14 | 175.00 | 0.88 | Out of the Money | 0 | 5 | 24 | 3.84 | 8.34% | 144.00000 | 1 : 40@138.17 | 23 Jan 13 | 22 Jan 13 | 60.0 | 50.93% | 12.95% |
| KBAN01PB | Put | 0.01 | 175.00 | 0.00 | Out of the Money | 0 | 0 | 11 | 709.28 | 21.19% | 138.17000 | 1 : 24.67308@138.17 | 11 Aug 12 | 6 Aug 12 | 115.0 | 77.18% | 7.02% |
| KBAN01PC | Put | 1.06 | 175.00 | 0.45 | Out of the Money | 0 | 5 | 24 | 5.50 | 15.31% | 180.00000 | 1 : 30@141 | 23 Jan 13 | 22 Jan 12 | 60.0 | 66.65% | 8.14% |
| KBAN06CA | Call | 1.44 | 175.00 | 1.22 | Out of the Money | 0 | 4 | 7 | 4.05 | 5.26% | 141.00000 | 1 : 30@141 | 7 Dec 12 | 29 Nov 12 | 20.0 | 48.19% | 0.32% |
| KBAN06PA | Put | 0.84 | 175.00 | 0.26 | Out of the Money | 0 | 4 | 7 | 6.94 | 16.69% | 171.00000 | 1 : 30@145 | 7 Dec 12 | 29 Nov 12 | 20.0 | 72.31% | 1.20% |

The opinions and information presented in this report are those of the Globlex Securities Co. Ltd. Research Department. No representation or warranty in any form regarding the accuracy, completeness, correctness or fairness of opinions and information of this report is offered by Globlex Securities Co. Ltd. Globlex Securities Co. Ltd. accepts no liability whatsoever for any loss arising from the use of this report or its contents. This report (in whole or in part) may not be reproduced or published without the express permission of Globlex Securities Co. Ltd.

Derivative Warrant Table 01 August 2012

| DW | Type of Option | DW Price | Stock Price | Price by Black Scholes Model | Status | Time to maturity | | | Gearing Ratio(x) | Premium | Exercise Price | Exercise Ratio | Expire Date | Last Trading Day | DW Issued(mn) | Implied Volatility | Cumulative Volume/ Outstanding Units |
|----------|----------------|----------|-------------|------------------------------|------------------|------------------|----|----|------------------|---------|----------------|---------------------|-------------|------------------|---------------|--------------------|--------------------------------------|
| | | | | | | y. | m. | d. | | | | | | | | | |
| KBAN08CC | Call | 1.27 | 175.00 | 1.09 | Out of the Money | 0 | 3 | 24 | 4.59 | 4.63% | 145.00000 | 1 : 30@145 | 24 Nov 12 | 19 Nov 12 | 20.0 | 39.13% | 1.76% |
| KBAN08PA | Put | 0.76 | 175.00 | 0.23 | Out of the Money | 0 | 3 | 24 | 7.68 | 15.89% | 170.00000 | 1 : 30@110.54 | 24 Nov 12 | 19 Nov 12 | 17.6 | 72.78% | 5.72% |
| KBAN13CE | Call | 3.22 | 175.00 | 3.27 | In the Money | 0 | 0 | 16 | 2.75 | -0.51% | 110.54000 | 1 : 19.73944@110.54 | 16 Aug 12 | 8 Aug 12 | 22.3 | 0.00% | 0.90% |
| KBAN13CF | Call | - | 175.00 | 0.69 | - | 0 | 6 | 20 | - | - | 155.00000 | 1 : 40@155 | 19 Feb 13 | 12 Feb 13 | 43.2 | - | - |
| KBAN13PC | Put | 0.75 | 175.00 | 0.12 | Out of the Money | 0 | 4 | 28 | 9.33 | 22.14% | 155.00000 | 1 : 25@155 | 28 Dec 12 | 21 Dec 12 | 23.0 | 69.63% | 2.70% |
| KBAN18CA | Call | 0.60 | 175.00 | 0.64 | In the Money | 0 | 1 | 18 | 5.91 | -0.74% | 144.09000 | 1 : 49.34641@120 | 18 Sep 12 | 11 Sep 12 | 20.0 | 0.00% | 6.05% |
| KBAN42CD | Call | 1.41 | 175.00 | 1.42 | Out of the Money | 0 | 4 | 22 | 3.10 | 0.80% | 120.00000 | 1 : 40@120 | 22 Dec 12 | 17 Dec 12 | 20.0 | 25.66% | 0.61% |
| KBAN42PA | Put | 0.57 | 175.00 | 0.19 | Out of the Money | 0 | 4 | 22 | 7.68 | 15.89% | 170.00000 | 1 : 40@31.77 | 22 Dec 12 | 17 Dec 12 | 20.0 | 64.41% | 0.28% |
| KK13CB | Call | 2.24 | 41.00 | 1.99 | Out of the Money | 0 | 2 | 30 | 3.80 | 3.78% | 31.77000 | 1 : 4.81325@31.77 | 30 Oct 12 | 22 Oct 12 | 26.9 | 57.59% | 15.88% |
| KTB01CC | Call | 0.84 | 16.40 | 0.80 | Out of the Money | 0 | 0 | 11 | 4.05 | 1.18% | 12.54000 | 1 : 4.82486@13.8 | 11 Aug 12 | 6 Aug 12 | 30.0 | 0.00% | 29.62% |
| KTB01CD | Call | 0.88 | 16.40 | 0.60 | Out of the Money | 0 | 5 | 24 | 3.73 | 10.98% | 13.80000 | 1 : 5@13.8 | 23 Jan 13 | 22 Jan 13 | 70.0 | 64.88% | 4.82% |
| KTB01PB | Put | 0.15 | 16.40 | 0.07 | Out of the Money | 0 | 0 | 11 | 28.32 | 3.53% | 16.40000 | 1 : 3.85996@18.2 | 11 Aug 12 | 6 Aug 12 | 28.0 | 75.34% | 1.24% |
| KTB01PC | Put | 0.99 | 16.40 | 0.51 | Out of the Money | 0 | 5 | 24 | 4.14 | 13.17% | 18.20000 | 1 : 4@18.2 | 23 Jan 13 | 22 Jan 13 | 30.0 | 67.12% | 1.08% |
| KTB13CD | Call | 0.40 | 16.40 | 0.12 | Out of the Money | 0 | 2 | 20 | 8.50 | 14.76% | 16.89000 | 1 : 4.82486@15.8 | 20 Oct 12 | 15 Oct 12 | 30.0 | 64.28% | 8.03% |
| KTB13PB | Put | 0.59 | 16.40 | 0.16 | Out of the Money | 0 | 7 | 22 | 5.56 | 21.65% | 15.80000 | 1 : 5@15.8 | 23 Mar 13 | 18 Mar 13 | 30.0 | 66.04% | 0.33% |
| KTB42CC | Call | 1.04 | 16.40 | 0.88 | Out of the Money | 0 | 4 | 22 | 3.15 | 6.10% | 12.20000 | 1 : 5@18 | 22 Dec 12 | 17 Dec 12 | 20.0 | 63.35% | 15.84% |
| KTB42PA | Put | 0.74 | 16.40 | 0.37 | Out of the Money | 0 | 4 | 22 | 4.43 | 12.80% | 18.00000 | 1 : 5@18 | 22 Dec 12 | 17 Dec 12 | 20.0 | 68.65% | 0.48% |
| LH01CC | Call | 0.44 | 7.80 | 0.32 | Out of the Money | 0 | 2 | 30 | 4.43 | 7.18% | 6.60000 | 1 : 4@8.8 | 30 Oct 12 | 22 Oct 12 | 55.0 | 76.04% | 8.29% |
| LH01PC | Put | 0.46 | 7.80 | 0.26 | Out of the Money | 0 | 2 | 30 | 4.24 | 10.77% | 8.80000 | 1 : 4@8.8 | 30 Oct 12 | 22 Oct 12 | 36.0 | 77.67% | 3.83% |
| LH18CB | Call | 0.40 | 7.80 | 0.26 | Out of the Money | 0 | 4 | 15 | 4.88 | 10.26% | 7.00000 | 1 : 4@11.3 | 15 Dec 12 | 7 Dec 12 | 20.0 | 67.74% | 1.84% |
| MINT01CA | Call | 1.08 | 15.70 | 0.92 | Out of the Money | 0 | 4 | 14 | 2.91 | 6.37% | 11.30000 | 1 : 5@11.3 | 14 Dec 12 | 6 Dec 12 | 44.0 | 77.79% | 5.30% |
| MINT42CC | Call | 1.23 | 15.70 | 1.00 | Out of the Money | 0 | 7 | 8 | 2.55 | 9.24% | 11.00000 | 1 : 5@14 | 9 Mar 13 | 4 Mar 13 | 20.0 | 74.31% | 0.15% |
| PS01CB | Call | 0.95 | 17.70 | 0.79 | Out of the Money | 0 | 2 | 30 | 3.73 | 5.93% | 14.00000 | 1 : 5@14 | 30 Oct 12 | 22 Oct 12 | 24.0 | 81.75% | 41.72% |
| PS01PA | Put | 0.60 | 17.70 | 0.15 | Out of the Money | 0 | 2 | 30 | 7.38 | 17.51% | 17.00000 | 1 : 4@13.63 | 30 Oct 12 | 22 Oct 12 | 20.0 | 80.28% | 3.43% |
| PS13PA | Put | 0.13 | 17.70 | 0.00 | Out of the Money | 0 | 1 | 27 | 34.96 | 25.85% | 13.63000 | 1 : 3.89469@13.63 | 27 Sep 12 | 20 Sep 12 | 29.5 | 77.50% | 0.01% |
| PTT01CC | Call | 0.51 | 326.00 | 0.29 | Out of the Money | 0 | 2 | 30 | 7.99 | 10.67% | 320.00000 | 1 : 80@365 | 30 Oct 12 | 22 Oct 12 | 55.0 | 55.45% | 85.01% |
| PTT01PC | Put | 1.27 | 326.00 | 0.84 | Out of the Money | 0 | 2 | 30 | 5.13 | 7.52% | 365.00000 | 1 : 50@365 | 30 Oct 12 | 22 Oct 12 | 30.0 | 67.81% | 29.21% |
| PTT03CA | Call | 0.21 | 326.00 | 0.12 | Out of the Money | 0 | 4 | 15 | 7.76 | 13.50% | 328.00000 | 1 : 200@290 | 15 Dec 12 | 7 Dec 12 | 50.0 | 50.34% | 2.46% |
| PTT06CC | Call | - | 326.00 | 1.10 | - | 0 | 8 | 4 | - | - | 290.00000 | 1 : 50@290 | 4 Apr 13 | 28 Mar 13 | 20.0 | - | - |
| PTT06PC | Put | - | 326.00 | 0.84 | - | 0 | 8 | 4 | - | - | 355.00000 | 1 : 50@335 | 4 Apr 13 | 28 Mar 13 | 20.0 | - | - |

The opinions and information presented in this report are those of the Globlex Securities Co. Ltd. Research Department. No representation or warranty in any form regarding the accuracy, completeness, correctness or fairness of opinions and information of this report is offered by Globlex Securities Co. Ltd. Globlex Securities Co. Ltd. accepts no liability whatsoever for any loss arising from the use of this report or its contents. This report (in whole or in part) may not be reproduced or published without the express permission of Globlex Securities Co. Ltd.

Derivative Warrant Table 01 August 2012

| DW | Type of Option | DW Price | Stock Price | Price by Black Scholes Model | Status | Time to maturity y. m. d. | | | Gearing Ratio(x) | Premium | Exercise Price | Exercise Ratio | Expire Date | Last Trading Day | DW Issued(mn) | Implied Volatility | Cumulative Volume/ Outstanding Units |
|----------|----------------|----------|-------------|------------------------------|------------------|------------------------------|---|----|------------------|---------|----------------|---------------------|-------------|------------------|---------------|--------------------|--------------------------------------|
| PTT08CD | Call | 0.37 | 326.00 | 0.16 | Out of the Money | 0 | 1 | 15 | 14.68 | 9.57% | 335.00000 | 1 : 60@335 | 15 Sep 12 | 10 Sep 12 | 20.0 | 55.19% | 4.30% |
| PTT08PB | Put | 1.08 | 326.00 | 0.80 | Out of the Money | 0 | 1 | 15 | 5.49 | 4.72% | 370.00000 | 1 : 55@300 | 15 Sep 12 | 10 Sep 12 | 16.8 | 81.91% | 0.43% |
| PTT13CG | Call | 0.64 | 326.00 | 0.41 | Out of the Money | 0 | 4 | 29 | 5.09 | 11.66% | 300.00000 | 1 : 100@300 | 29 Dec 12 | 24 Dec 12 | 30.0 | 61.19% | 0.03% |
| PTT13PC | Put | 0.73 | 326.00 | 0.35 | Out of the Money | 0 | 7 | 22 | 4.47 | 16.56% | 345.00000 | 1 : 100@300 | 23 Mar 13 | 18 Mar 13 | 30.0 | - | - |
| PTT18CC | Call | 0.55 | 326.00 | 0.40 | Out of the Money | 0 | 4 | 14 | 5.93 | 8.90% | 300.00000 | 1 : 100@300 | 14 Dec 12 | 6 Dec 12 | 20.0 | 49.38% | 1.65% |
| PTT18PB | Put | 0.30 | 326.00 | 0.07 | Out of the Money | 0 | 4 | 14 | 10.87 | 20.25% | 290.00000 | 1 : 100@284.44 | 14 Dec 12 | 6 Dec 12 | 20.0 | 63.05% | 0.03% |
| PTT42CD | Call | 1.01 | 326.00 | 0.88 | Out of the Money | 0 | 1 | 2 | 6.58 | 2.45% | 284.44000 | 1 : 49.04365@284.44 | 1 Sep 12 | 27 Aug 12 | 16.0 | 54.16% | 17.68% |
| PTT42PA | Put | 0.69 | 326.00 | 0.43 | Out of the Money | 0 | 1 | 2 | 9.63 | 5.08% | 343.29000 | 1 : 49.04365@152.58 | 1 Sep 12 | 27 Aug 12 | 23.0 | 75.13% | 13.52% |
| PTTE01CC | Call | 0.07 | 152.00 | 0.06 | Out of the Money | 0 | 0 | 11 | 55.15 | 2.19% | 152.58000 | 1 : 39.37008@152.58 | 11 Aug 12 | 6 Aug 12 | 38.0 | 53.36% | 174.53% |
| PTTE01CD | Call | 0.59 | 152.00 | 0.28 | Out of the Money | 0 | 5 | 24 | 6.44 | 17.50% | 155.00000 | 1 : 40@187.03 | 23 Jan 13 | 22 Jan 13 | 60.0 | 59.07% | 10.55% |
| PTTE01PC | Put | 0.91 | 152.00 | 0.88 | Out of the Money | 0 | 0 | 11 | 4.24 | 0.52% | 187.03000 | 1 : 39.37008@187.03 | 11 Aug 12 | 6 Aug 12 | 53.0 | 0.00% | 15.94% |
| PTTE01PD | Put | 1.34 | 152.00 | 0.98 | Out of the Money | 0 | 5 | 24 | 2.84 | 8.29% | 193.00000 | 1 : 40@160 | 23 Jan 13 | 22 Jan 13 | 60.0 | 61.20% | 4.38% |
| PTTE08CC | Call | 0.10 | 152.00 | 0.04 | Out of the Money | 0 | 0 | 25 | 43.43 | 7.57% | 160.00000 | 1 : 35@160 | 25 Aug 12 | 20 Aug 12 | 20.3 | 51.56% | 5.78% |
| PTTE08PA | Put | 1.32 | 152.00 | 1.25 | Out of the Money | 0 | 0 | 25 | 3.84 | 1.05% | 190.00000 | 1 : 30@147.66 | 25 Aug 12 | 20 Aug 12 | 19.5 | 49.49% | 23.96% |
| PTTE13CE | Call | 0.21 | 152.00 | 0.16 | Out of the Money | 0 | 0 | 17 | 18.38 | 2.58% | 147.66000 | 1 : 39.37008@147.66 | 17 Aug 12 | 9 Aug 12 | 20.9 | 68.85% | 1.67% |
| PTTE13CF | Call | - | 152.00 | 0.19 | - | 0 | 7 | 22 | - | - | 165.00000 | 1 : 50@170 | 23 Mar 13 | 18 Mar 13 | 50.0 | - | - |
| PTTE13PB | Put | - | 152.00 | 0.44 | - | 0 | 7 | 22 | - | - | 170.00000 | 1 : 50@170 | 23 Mar 13 | 18 Mar 13 | 30.0 | - | - |
| PTTE18CA | Call | 0.03 | 152.00 | 0.00 | Out of the Money | 0 | 1 | 19 | 101.33 | 22.70% | 185.00000 | 1 : 50@166.5 | 19 Sep 12 | 12 Sep 12 | 20.0 | 43.96% | 8.54% |
| PTTE18PA | Put | 0.44 | 152.00 | 0.31 | Out of the Money | 0 | 1 | 19 | 6.91 | 4.93% | 166.50000 | 1 : 50@166.5 | 19 Sep 12 | 12 Sep 12 | 20.0 | 62.10% | 0.09% |
| PTTE42CD | Call | 0.55 | 152.00 | 0.31 | Out of the Money | 0 | 1 | 2 | 13.82 | 5.92% | 150.00000 | 1 : 20@185 | 1 Sep 12 | 27 Aug 12 | 13.0 | 63.01% | 7.30% |
| PTTE42PA | Put | 1.74 | 152.00 | 1.62 | Out of the Money | 0 | 1 | 2 | 4.37 | 1.18% | 185.00000 | 1 : 20@185 | 1 Sep 12 | 27 Aug 12 | 18.0 | 61.54% | 0.03% |
| PTTG01CB | Call | 0.14 | 59.25 | 0.02 | Out of the Money | 0 | 1 | 8 | 21.16 | 17.81% | 67.00000 | 1 : 20@80 | 8 Sep 12 | 3 Sep 12 | 290.0 | 66.36% | 43.55% |
| PTTG01PB | Put | 2.10 | 59.25 | 2.04 | Out of the Money | 0 | 1 | 8 | 2.82 | 0.42% | 80.00000 | 1 : 10@80 | 8 Sep 12 | 3 Sep 12 | 25.0 | 84.94% | 11.41% |
| PTTG03CA | Call | 0.27 | 59.25 | 0.15 | Out of the Money | 0 | 4 | 15 | 5.49 | 16.12% | 58.00000 | 1 : 40@60 | 15 Dec 12 | 7 Dec 12 | 25.0 | 67.52% | 0.27% |
| PTTG06CB | Call | 0.68 | 59.25 | 0.40 | Out of the Money | 0 | 6 | 8 | 5.81 | 18.48% | 60.00000 | 1 : 15@60 | 7 Feb 13 | 31 Jan 13 | 20.0 | 57.90% | 4.17% |
| PTTG06PB | Put | 1.16 | 59.25 | 0.80 | Out of the Money | 0 | 6 | 8 | 3.41 | 11.22% | 70.00000 | 1 : 15@70 | 7 Feb 13 | 31 Jan 13 | 20.0 | 64.01% | 0.20% |
| PTTG08CB | Call | 0.28 | 59.25 | 0.08 | Out of the Money | 0 | 3 | 11 | 14.11 | 25.23% | 70.00000 | 1 : 15@70 | 10 Nov 12 | 5 Nov 12 | 19.8 | 62.40% | 1.72% |
| PTTG08PA | Put | 1.23 | 59.25 | 0.67 | Out of the Money | 0 | 3 | 11 | 4.82 | 12.74% | 64.00000 | 1 : 10@53 | 10 Nov 12 | 5 Nov 12 | 19.8 | 76.91% | 0.30% |
| PTTG13CB | Call | 0.69 | 59.25 | 0.45 | Out of the Money | 0 | 4 | 21 | 4.29 | 12.74% | 53.00000 | 1 : 20@53 | 21 Dec 12 | 14 Dec 12 | 30.0 | 64.28% | 28.10% |
| PTTG13PB | Put | 0.62 | 59.25 | 0.33 | Out of the Money | 0 | 4 | 21 | 4.78 | 14.60% | 63.00000 | 1 : 20@54 | 21 Dec 12 | 14 Dec 12 | 30.0 | 71.16% | 0.52% |

The opinions and information presented in this report are those of the Globlex Securities Co. Ltd. Research Department. No representation or warranty in any form regarding the accuracy, completeness, correctness or fairness of opinions and information of this report is offered by Globlex Securities Co. Ltd. Globlex Securities Co. Ltd. accepts no liability whatsoever for any loss arising from the use of this report or its contents. This report (in whole or in part) may not be reproduced or published without the express permission of Globlex Securities Co. Ltd.

Derivative Warrant Table 01 August 2012

| DW | Type of Option | DW Price | Stock Price | Price by Black Scholes Model | Status | Time to maturity | | | Gearing Ratio(x) | Premium | Exercise Price | Exercise Ratio | Expire Date | Last Trading Day | DW Issued(mn) | Implied Volatility | Cumulative Volume/ Outstanding Units |
|----------|----------------|----------|-------------|------------------------------|------------------|------------------|----|----|------------------|---------|----------------|---------------------|-------------|------------------|---------------|--------------------|--------------------------------------|
| | | | | | | y. | m. | d. | | | | | | | | | |
| PTTG42CB | Call | 0.81 | 59.25 | 0.49 | Out of the Money | 0 | 7 | 15 | 3.66 | 18.48% | 54.00000 | 1 : 20@54 | 16 Mar 13 | 11 Mar 13 | 20.0 | 69.90% | 4.29% |
| ROBI13CA | Call | 1.92 | 61.25 | 2.03 | In the Money | 0 | 1 | 27 | 3.23 | -1.34% | 41.47000 | 1 : 9.87362@95.31 | 27 Sep 12 | 20 Sep 12 | 29.2 | 0.00% | 0.21% |
| SCB01CB | Call | 2.64 | 160.50 | 2.66 | In the Money | 0 | 0 | 11 | 2.47 | -0.21% | 95.31000 | 1 : 24.56399@95.31 | 11 Aug 12 | 6 Aug 12 | 30.0 | 0.00% | 6.24% |
| SCB01CC | Call | 1.37 | 160.50 | 1.17 | Out of the Money | 0 | 5 | 24 | 3.91 | 7.85% | 132.00000 | 1 : 30@117.91 | 23 Jan 13 | 22 Jan 13 | 60.0 | 48.62% | 11.13% |
| SCB01PA | Put | 0.01 | 160.50 | 0.00 | Out of the Money | 0 | 0 | 11 | 816.78 | 26.66% | 117.91000 | 1 : 19.65023@117.91 | 11 Aug 12 | 6 Aug 12 | 100.0 | 94.63% | 25.83% |
| SCB01PB | Put | 0.99 | 160.50 | 0.59 | Out of the Money | 0 | 5 | 24 | 5.40 | 15.08% | 166.00000 | 1 : 30@132 | 23 Jan 13 | 22 Jan 13 | 60.0 | 69.76% | 6.37% |
| SCB06CD | Call | 1.73 | 160.50 | 1.43 | Out of the Money | 0 | 6 | 8 | 3.71 | 9.19% | 132.00000 | 1 : 25@132 | 7 Feb 13 | 31 Jan 13 | 20.0 | 57.67% | 0.21% |
| SCB06PD | Put | 1.13 | 160.50 | 0.60 | Out of the Money | 0 | 6 | 8 | 5.68 | 17.91% | 160.00000 | 1 : 25@135 | 7 Feb 13 | 31 Jan 13 | 20.0 | 66.14% | 1.46% |
| SCB08CD | Call | 0.89 | 160.50 | 0.87 | Out of the Money | 0 | 0 | 25 | 6.01 | 0.75% | 135.00000 | 1 : 30@135 | 25 Aug 12 | 20 Aug 12 | 20.0 | 0.00% | 27.97% |
| SCB08PB | Put | 0.30 | 160.50 | 0.14 | Out of the Money | 0 | 0 | 25 | 21.40 | 8.10% | 155.00000 | 1 : 25@130 | 25 Aug 12 | 20 Aug 12 | 20.0 | 86.48% | 44.67% |
| SCB13CC | Call | 1.76 | 160.50 | 1.43 | Out of the Money | 0 | 4 | 29 | 3.65 | 8.41% | 130.00000 | 1 : 25@130 | 29 Dec 12 | 24 Dec 12 | 22.4 | 51.58% | 5.38% |
| SCB13PC | Put | 1.07 | 160.50 | 0.40 | Out of the Money | 0 | 7 | 26 | 6.00 | 26.32% | 145.00000 | 1 : 25@142 | 27 Mar 13 | 20 Mar 13 | 21.0 | 72.69% | 0.24% |
| SCB42CD | Call | 0.95 | 160.50 | 0.76 | Out of the Money | 0 | 7 | 15 | 4.22 | 12.15% | 142.00000 | 1 : 40@142 | 16 Mar 13 | 11 Mar 13 | 20.0 | 51.43% | 0.61% |
| SCC01CC | Call | 0.47 | 328.00 | 0.24 | Out of the Money | 0 | 1 | 8 | 8.90 | 6.90% | 313.76000 | 1 : 78.43137@377.49 | 8 Sep 12 | 3 Sep 12 | 24.0 | 62.14% | 59.74% |
| SCC01PC | Put | 1.25 | 328.00 | 0.98 | Out of the Money | 0 | 1 | 8 | 5.35 | 3.59% | 377.49000 | 1 : 49.01961@377.49 | 8 Sep 12 | 3 Sep 12 | 22.0 | 84.03% | 7.94% |
| SCC08CC | Call | 0.39 | 328.00 | 0.08 | Out of the Money | 0 | 1 | 29 | 16.82 | 12.65% | 350.00000 | 1 : 50@350 | 29 Sep 12 | 24 Sep 12 | 20.0 | 45.28% | 3.26% |
| SCC08PB | Put | 0.95 | 328.00 | 0.48 | Out of the Money | 0 | 1 | 29 | 6.91 | 7.77% | 350.00000 | 1 : 50@350 | 29 Sep 12 | 24 Sep 12 | 20.0 | 66.74% | 0.20% |
| SCC13CD | Call | 0.27 | 328.00 | 0.25 | Out of the Money | 0 | 0 | 17 | 12.39 | 0.74% | 303.95000 | 1 : 98.03922@315 | 17 Aug 12 | 9 Aug 12 | 25.0 | 37.59% | 0.02% |
| SCC13CE | Call | 0.69 | 328.00 | 0.34 | Out of the Money | 0 | 7 | 25 | 4.75 | 17.07% | 315.00000 | 1 : 100@315 | 26 Mar 13 | 19 Mar 13 | 50.0 | 59.07% | 0.00% |
| SCC13PC | Put | 0.85 | 328.00 | 0.24 | Out of the Money | 0 | 7 | 25 | 3.86 | 22.26% | 340.00000 | 1 : 100@343.17 | 26 Mar 13 | 19 Mar 13 | 30.0 | - | - |
| SCC18CA | Call | 0.13 | 328.00 | 0.05 | Out of the Money | 0 | 1 | 21 | 25.73 | 8.51% | 343.17000 | 1 : 98.05014@343.17 | 21 Sep 12 | 14 Sep 12 | 20.0 | 38.08% | 18.98% |
| SPAL01CB | Call | 1.09 | 18.00 | 0.88 | Out of the Money | 0 | 4 | 14 | 3.30 | 6.94% | 13.80000 | 1 : 5@13.26 | 14 Dec 12 | 6 Dec 12 | 36.0 | 71.90% | 8.96% |
| SPAL13CA | Call | 1.25 | 18.00 | 1.22 | Out of the Money | 0 | 1 | 19 | 3.67 | 0.95% | 13.26000 | 1 : 3.9285@13.26 | 19 Sep 12 | 12 Sep 12 | 29.2 | 61.39% | 0.17% |
| SSI13CB | Call | 0.06 | 0.63 | 0.00 | Out of the Money | 0 | 2 | 30 | 21.00 | 34.92% | 0.82000 | 1 : 0.5@0.7 | 30 Oct 12 | 22 Oct 12 | 50.0 | 67.39% | 0.66% |
| SSI18CA | Call | 0.10 | 0.63 | 0.02 | Out of the Money | 0 | 2 | 6 | 12.60 | 19.05% | 0.70000 | 1 : 0.5@0.7 | 6 Oct 12 | 1 Oct 12 | 20.0 | 70.67% | 2.55% |
| STA01CC | Call | 0.05 | 14.50 | 0.00 | Out of the Money | 0 | 1 | 8 | 37.17 | 33.86% | 19.02000 | 1 : 7.80275@13.4 | 8 Sep 12 | 3 Sep 12 | 25.0 | 96.30% | 18.07% |
| STA01CD | Call | - | 14.50 | 0.33 | - | 0 | 5 | 24 | - | - | 13.40000 | 1 : 5@13.4 | 23 Jan 13 | 16 Jan 13 | 33.2 | 76.40% | 15.95% |
| STA01PB | Put | 1.84 | 14.50 | 1.81 | Out of the Money | 0 | 1 | 8 | 1.62 | 0.44% | 23.41000 | 1 : 4.87686@18 | 8 Sep 12 | 3 Sep 12 | 20.0 | 103.50% | 9.55% |
| STA01PC | Put | 1.35 | 14.50 | 0.81 | Out of the Money | 0 | 5 | 24 | 2.69 | 13.10% | 18.00000 | 1 : 4@18 | 23 Jan 13 | 16 Jan 13 | 12.0 | 79.33% | 0.17% |
| STA03CA | Call | 0.26 | 14.50 | 0.07 | Out of the Money | 0 | 4 | 15 | 5.58 | 20.69% | 14.90000 | 1 : 10@14.6 | 15 Dec 12 | 7 Dec 12 | 25.0 | 77.62% | 0.96% |

The opinions and information presented in this report are those of the Globlex Securities Co. Ltd. Research Department. No representation or warranty in any form regarding the accuracy, completeness, correctness or fairness of opinions and information of this report is offered by Globlex Securities Co. Ltd. Globlex Securities Co. Ltd. accepts no liability whatsoever for any loss arising from the use of this report or its contents. This report (in whole or in part) may not be reproduced or published without the express permission of Globlex Securities Co. Ltd.

Derivative Warrant Table 01 August 2012

| DW | Type of Option | DW Price | Stock Price | Price by Black Scholes Model | Status | Time to maturity y. m. d. | Gearing Ratio(x) | Premium | Exercise Price | Exercise Ratio | Expire Date | Last Trading Day | DW Issued(mn) | Implied Volatility | Cumulative Volume/ Outstanding Units |
|----------|----------------|----------|-------------|------------------------------|------------------|------------------------------|------------------|---------|----------------|-------------------|-------------|------------------|---------------|--------------------|---|
| STA08CB | Call | 0.52 | 14.50 | 0.16 | Out of the Money | 0 5 30 | 4.65 | 22.21% | 14.60000 | 1 : 6@14.6 | 29 Jan 13 | 22 Jan 13 | 20.0 | 77.10% | 0.15% |
| STA08PA | Put | - | 14.50 | 0.93 | - | 0 5 30 | - | - | 19.50000 | 1 : 5@15 | 29 Jan 13 | 22 Jan 13 | 16.7 | - | - |
| STA13CD | Call | - | 14.50 | 0.13 | - | 0 4 29 | - | - | 15.00000 | 1 : 5@15 | 29 Dec 12 | 24 Dec 12 | 30.0 | - | - |
| STA13CE | Call | 0.76 | 14.50 | 0.10 | Out of the Money | 0 11 5 | 3.82 | 43.45% | 17.00000 | 1 : 5@21.46 | 6 Jul 13 | 28 Jun 13 | 28.1 | - | - |
| STA13PA | Put | 1.61 | 14.50 | 1.39 | Out of the Money | 0 2 13 | 1.85 | 6.15% | 21.46000 | 1 : 4.87686@21.46 | 13 Oct 12 | 8 Oct 12 | 26.1 | - | - |
| STA13PB | Put | - | 14.50 | 0.98 | - | 0 11 5 | - | - | 20.00000 | 1 : 5@21.07 | 6 Jul 13 | 28 Jun 13 | 18.3 | - | - |
| STA18CA | Call | 0.03 | 14.50 | 0.00 | Out of the Money | 0 1 20 | 49.55 | 47.33% | 21.07000 | 1 : 9.75369@21.07 | 20 Sep 12 | 13 Sep 12 | 20.0 | 74.26% | 8.05% |
| STA42PA | Put | 1.83 | 14.50 | 1.81 | Out of the Money | 0 1 2 | 1.62 | 0.10% | 23.41000 | 1 : 4.87686@12 | 1 Sep 12 | 27 Aug 12 | 60.0 | - | - |
| STA42CD | Call | 0.87 | 14.50 | 0.57 | Out of the Money | 0 6 17 | 3.33 | 12.76% | 12.00000 | 1 : 5@12 | 16 Feb 13 | 11 Feb 13 | 20.0 | 74.38% | 8.51% |
| TCAP01CB | Call | 0.82 | 32.25 | 0.81 | Out of the Money | 0 1 8 | 4.02 | 0.64% | 24.44000 | 1 : 9.77804@38 | 8 Sep 12 | 3 Sep 12 | 75.0 | 0.00% | 94.23% |
| TCAP01PA | Put | 0.67 | 32.25 | 0.56 | Out of the Money | 0 1 8 | 4.81 | 2.95% | 38.00000 | 1 : 10@38 | 8 Sep 12 | 3 Sep 12 | 20.0 | 87.52% | 42.57% |
| TCAP08CC | Call | 0.67 | 32.25 | 0.49 | Out of the Money | 0 2 16 | 6.02 | 6.54% | 29.00000 | 1 : 8@32 | 16 Oct 12 | 9 Oct 12 | 20.0 | 48.81% | 15.11% |
| TCAP08PA | Put | 1.15 | 32.25 | 0.35 | Out of the Money | 0 2 16 | 7.01 | 15.04% | 32.00000 | 1 : 4@32 | 16 Oct 12 | 9 Oct 12 | 14.5 | 84.64% | 4.41% |
| TCAP13CD | Call | 1.50 | 32.25 | 1.62 | In the Money | 0 1 11 | 4.40 | -1.48% | 24.44000 | 1 : 4.88878@26 | 11 Sep 12 | 4 Sep 12 | 20.7 | 0.00% | 6.23% |
| TCAP42CC | Call | 0.49 | 32.25 | 0.37 | Out of the Money | 0 7 15 | 3.29 | 11.01% | 26.00000 | 1 : 20@26 | 16 Mar 13 | 11 Mar 13 | 20.0 | 66.27% | 0.85% |
| THAI01CD | Call | 0.15 | 19.90 | 0.00 | Out of the Money | 0 2 30 | 13.27 | 28.14% | 24.00000 | 1 : 10@29 | 30 Oct 12 | 22 Oct 12 | 35.0 | 79.82% | 3.21% |
| THAI01PC | Put | 1.20 | 19.90 | 1.10 | Out of the Money | 0 2 30 | 2.07 | 2.51% | 29.00000 | 1 : 8@29 | 30 Oct 12 | 22 Oct 12 | 20.0 | 74.44% | 1.20% |
| THAI03CA | Call | 0.20 | 19.90 | 0.02 | Out of the Money | 0 7 14 | 4.98 | 30.65% | 22.00000 | 1 : 20@22.5 | 15 Mar 13 | 8 Mar 13 | 25.0 | 78.76% | 3.97% |
| THAI13PA | Put | 0.45 | 19.90 | 0.31 | Out of the Money | 0 1 11 | 5.53 | 5.03% | 22.50000 | 1 : 8@22.5 | 11 Sep 12 | 4 Sep 12 | 30.0 | 77.00% | 0.30% |
| THAI13CC | Call | 0.43 | 19.90 | 0.11 | Out of the Money | 0 4 28 | 5.78 | 17.79% | 20.00000 | 1 : 8@24 | 28 Dec 12 | 21 Dec 12 | 30.0 | 71.07% | 3.34% |
| THAI18CB | Call | 0.13 | 19.90 | 0.00 | Out of the Money | 0 3 2 | 9.57 | 31.06% | 24.00000 | 1 : 16@24 | 1 Nov 12 | 25 Oct 12 | 20.0 | 86.15% | 0.51% |
| THAI42CC | Call | 1.13 | 19.90 | 0.66 | Out of the Money | 0 6 17 | 3.52 | 13.82% | 17.00000 | 1 : 5@25 | 16 Feb 13 | 11 Feb 13 | 20.0 | 72.47% | 7.34% |
| THAI42PA | Put | 1.08 | 19.90 | 1.00 | Out of the Money | 0 1 2 | 3.69 | 1.51% | 25.00000 | 1 : 5@25 | 1 Sep 12 | 27 Aug 12 | 30.0 | 79.20% | 0.03% |
| TISC01CB | Call | 0.70 | 40.25 | 0.52 | Out of the Money | 0 4 14 | 3.83 | 8.07% | 33.00000 | 1 : 15@41 | 14 Dec 12 | 6 Dec 12 | 35.0 | 62.84% | 14.84% |
| TISC01PA | Put | 0.73 | 40.25 | 0.21 | Out of the Money | 0 4 14 | 5.51 | 16.27% | 41.00000 | 1 : 10@41 | 14 Dec 12 | 6 Dec 12 | 20.0 | 72.62% | 0.30% |
| TMB01CA | Call | 0.18 | 1.54 | 0.05 | Out of the Money | 0 1 8 | 17.43 | 10.93% | 1.62000 | 1 : 0.49096@2 | 8 Sep 12 | 3 Sep 12 | 26.0 | 60.60% | 10.99% |
| TMB01PA | Put | 0.97 | 1.54 | 0.90 | Out of the Money | 0 1 8 | 3.18 | 1.62% | 2.00000 | 1 : 0.5@2 | 8 Sep 12 | 3 Sep 12 | 35.0 | 85.01% | 1.55% |
| TMB13CC | Call | 0.29 | 1.54 | 0.15 | Out of the Money | 0 1 19 | 10.82 | 7.95% | 1.52000 | 1 : 0.49096@1.57 | 19 Sep 12 | 12 Sep 12 | 30.0 | 58.32% | 0.53% |
| TMB13PA | Put | 0.37 | 1.54 | 0.14 | Out of the Money | 0 1 19 | 8.48 | 9.85% | 1.57000 | 1 : 0.49096@1.57 | 19 Sep 12 | 12 Sep 12 | 29.8 | - | - |
| TMB18CC | Call | 0.12 | 1.54 | 0.01 | Out of the Money | 0 1 21 | 13.07 | 18.69% | 1.71000 | 1 : 0.98193@54 | 21 Sep 12 | 14 Sep 12 | 20.0 | - | - |

The opinions and information presented in this report are those of the Globlex Securities Co. Ltd. Research Department. No representation or warranty in any form regarding the accuracy, completeness, correctness or fairness of opinions and information of this report is offered by Globlex Securities Co. Ltd. Globlex Securities Co. Ltd. accepts no liability whatsoever for any loss arising from the use of this report or its contents. This report (in whole or in part) may not be reproduced or published without the express permission of Globlex Securities Co. Ltd.

Derivative Warrant Table 01 August 2012

| DW | Type of Option | DW Price | Stock Price | Price by Black Scholes Model | Status | Time to maturity y. m. d. | Gearing Ratio(x) | Premium | Exercise Price | Exercise Ratio | Expire Date | Last Trading Day | DW Issued(mn) | Implied Volatility | Cumulative Volume/ Outstanding Units |
|----------|----------------|----------|-------------|------------------------------|------------------|------------------------------|------------------|---------|----------------|----------------|-------------|------------------|---------------|--------------------|---|
| TOP01CC | Call | 0.61 | 59.00 | 0.35 | Out of the Money | 0 4 14 | 4.84 | 12.20% | 54.00000 | 1 : 20@54 | 14 Dec 12 | 6 Dec 12 | 60.0 | 65.19% | 17.31% |
| TOP01PC | Put | 1.83 | 59.00 | 1.25 | Out of the Money | 0 4 14 | 3.22 | 8.98% | 72.00000 | 1 : 10@78 | 14 Dec 12 | 6 Dec 12 | 32.0 | 73.53% | 8.19% |
| TOP08CD | Call | 0.26 | 59.00 | 0.00 | Out of the Money | 0 2 30 | 22.69 | 36.61% | 78.00000 | 1 : 10@78 | 30 Oct 12 | 22 Oct 12 | 19.5 | - | - |
| TOP08PA | Put | 1.21 | 59.00 | 0.65 | Out of the Money | 0 2 30 | 4.88 | 10.34% | 65.00000 | 1 : 10@72 | 30 Oct 12 | 22 Oct 12 | 19.5 | 72.86% | 0.21% |
| TOP13CD | Call | 0.17 | 59.00 | 0.01 | Out of the Money | 0 2 25 | 17.35 | 27.80% | 72.00000 | 1 : 20@72 | 25 Oct 12 | 17 Oct 12 | 28.1 | 65.90% | 1.85% |
| TOP13CE | Call | - | 59.00 | 0.25 | - | 0 7 26 | - | - | 60.00000 | 1 : 20@63 | 27 Mar 13 | 20 Mar 13 | 50.0 | - | - |
| TOP13PC | Put | - | 59.00 | 0.31 | - | 0 7 26 | - | - | 63.00000 | 1 : 20@63 | 27 Mar 13 | 20 Mar 13 | 30.0 | - | - |
| TOP18CD | Call | 0.27 | 59.00 | 0.05 | Out of the Money | 0 3 2 | 8.74 | 21.61% | 65.00000 | 1 : 25@48 | 1 Nov 12 | 25 Oct 12 | 20.0 | - | - |
| TOP42CD | Call | 0.91 | 59.00 | 0.64 | Out of the Money | 0 7 8 | 3.24 | 12.20% | 48.00000 | 1 : 20@48 | 9 Mar 13 | 4 Mar 13 | 20.0 | 69.55% | 1.19% |
| TOP42PA | Put | 1.07 | 59.00 | 0.76 | Out of the Money | 0 7 8 | 2.76 | 9.15% | 75.00000 | 1 : 20@12.8 | 9 Mar 13 | 4 Mar 13 | 20.0 | 59.93% | 0.38% |
| TPIP01CB | Call | 0.26 | 12.00 | 0.05 | Out of the Money | 0 2 30 | 9.23 | 17.50% | 12.80000 | 1 : 5@12.8 | 30 Oct 12 | 22 Oct 12 | 50.0 | 65.26% | 6.19% |
| TPIP01PA | Put | 0.94 | 12.00 | 0.67 | Out of the Money | 0 2 30 | 3.19 | 8.00% | 14.80000 | 1 : 4@3 | 30 Oct 12 | 22 Oct 12 | 25.0 | 81.04% | 0.02% |
| TRUE01CD | Call | 1.31 | 4.00 | 1.05 | Out of the Money | 0 4 14 | 3.05 | 7.75% | 3.00000 | 1 : 1@3 | 14 Dec 12 | 6 Dec 06 | 45.0 | 86.15% | 46.49% |
| TRUE01PD | Put | 0.84 | 4.00 | 0.35 | Out of the Money | 0 4 14 | 4.76 | 16.00% | 4.20000 | 1 : 1@3.2 | 14 Dec 12 | 6 Dec 12 | 24.0 | 77.67% | 22.22% |
| TRUE08CC | Call | 1.05 | 4.00 | 0.84 | Out of the Money | 0 2 30 | 3.81 | 6.25% | 3.20000 | 1 : 1@3.2 | 30 Oct 12 | 22 Oct 12 | 20.0 | 81.27% | 22.48% |
| TRUE08PA | Put | 0.60 | 4.00 | 0.20 | Out of the Money | 0 2 30 | 6.67 | 15.00% | 4.00000 | 1 : 1@3.5 | 30 Oct 12 | 22 Oct 12 | 20.0 | 76.34% | 1.30% |
| TRUE13CD | Call | 1.08 | 4.00 | 0.63 | Out of the Money | 0 4 28 | 3.70 | 14.50% | 3.50000 | 1 : 1@3.5 | 28 Dec 12 | 21 Dec 12 | 28.6 | 88.38% | 15.14% |
| TRUE13PA | Put | 0.16 | 4.00 | 0.00 | Out of the Money | 0 1 27 | 25.00 | 24.00% | 3.20000 | 1 : 1@3.2 | 27 Sep 12 | 20 Sep 12 | 29.5 | - | - |
| TRUE18CC | Call | 0.48 | 4.00 | 0.41 | Out of the Money | 0 1 21 | 4.17 | 4.00% | 3.20000 | 1 : 2@3.2 | 21 Sep 12 | 14 Sep 12 | 20.0 | 97.59% | 1.84% |
| TRUE42CA | Call | 0.72 | 4.00 | 0.58 | Out of the Money | 0 4 22 | 2.78 | 8.50% | 2.90000 | 1 : 2@4.5 | 22 Dec 12 | 17 Dec 12 | 30.0 | 89.11% | 0.10% |
| TRUE42PA | Put | 0.55 | 4.00 | 0.28 | Out of the Money | 0 4 22 | 3.64 | 15.00% | 4.50000 | 1 : 2@4.5 | 22 Dec 12 | 17 Dec 12 | 30.0 | 79.11% | 0.05% |
| TUF01CB | Call | 0.87 | 73.50 | 0.64 | Out of the Money | 0 4 14 | 4.22 | 8.03% | 62.00000 | 1 : 20@75 | 14 Dec 12 | 6 Dec 12 | 35.0 | 62.29% | 2.92% |
| TUF01PA | Put | 1.33 | 73.50 | 0.45 | Out of the Money | 0 4 14 | 5.53 | 16.05% | 75.00000 | 1 : 10@75 | 14 Dec 12 | 6 Dec 12 | 14.0 | 73.15% | 0.76% |
| TUF13CB | Call | 0.59 | 73.50 | 0.19 | Out of the Money | 0 4 1 | 6.23 | 18.10% | 75.00000 | 1 : 20@0 | 1 Dec 12 | 26 Nov 12 | 30.0 | 73.76% | 7.91% |

Note: Cumulative Volume and Implied Volatility were calculated from 25/07/2012
Exercise Ratio is no. of shares of common stock : DW