



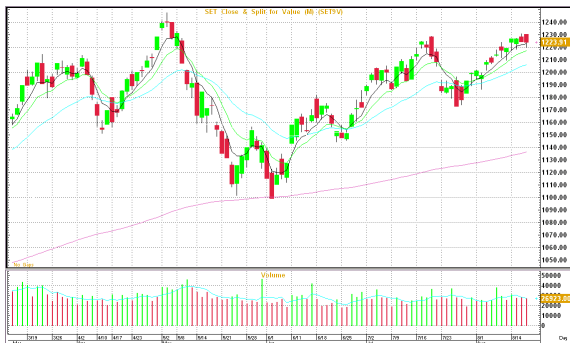
MORNING CALL ACTION NOTES

By Globlex Research Department

August 20, 2012

MARKET SUMMARY- Aug 17, 2012

CLOSE	1,223.91	VOLUME	B26,923.44bn
CHANGE	-0.49	P/E	16.97
% CHG.	-0.04%	P/BV	2.13



WORLD INDICES

	Last	Change	%Change
DJIA	13,275.20	25.09	0.19%
S&P500	1,418.16	2.65	0.19%
NASDAQ	3,076.59	14.20	0.46%
FTSE	5,852.42	17.91	0.31%
DAX	7,040.88	44.59	0.64%
NIKKEI	9,162.37	69.61	0.77%
H. SENG	20,116.07	153.12	0.77%
FTSTI	3,062.11	-0.78	-0.03%

COMMODITIES

	Last	Change	%Change
NYMEX	96.01	0.41	0.43%
BRENT	113.71	-1.56	-1.35%
GOLD	1,619.40	0.20	0.01%

CURRENCIES

	Last	Change	%Change
BT / \$	31.49	0.03	0.10%
\$ / EURO	1.2333	-0.0021	-0.17%
YEN / \$	79.54	0.22	0.28%

Transaction by Investor Group in SET

Investor Type	17-8-12	MTD	YTD
Local Institutions	384.32	-1,206.88	-46,177.88
Proprietary Trading	511.19	4,573.46	5,115.46
Foreign	-1,858.86	4,305.47	68,142.47
Retail	963.35	-7,672.06	-27,080.06

Market View : ชื่อเก็งกำไรแห้วรับ

Technical : แห้วรับ 1,222/ 1,218 แห้วต้าน 1,230/1,248**หุ้นแนะนำพิเศษ:** KTB แห้วรับ 16.90 แห้วต้าน 17.20/17.60

หุ้นเด่นรายวัน: SPPT CENTEL

วันศุกร์ตลาดหุ้นไทยปิดลดลงเล็กน้อย โดย ดัชนี SET ปิดที่ 1,223.91 จุด ลดลง 0.49 จุด (-0.04%) มูลค่าการซื้อขาย 26,923.44 ล้านบาท นักลงทุนต่างชาติยังขายสุทธิอีก 1,858.86 ล้านบาท

แนวโน้มตลาดหุ้นไทย ทางฝ่ายวิจัย บล.โกลเบล็ก คาดมีแนวโน้มผันผวนในกรอบ 1,210-1,230 ดัชนีปรับตัวขึ้นแนวรับระหว่างวัน 1,220 และมีโอกาสที่จะกลับตัวขึ้นตามภาวะตลาดต่างประเทศ และความคาดหวังเกี่ยวกับแนวทางการแก้ไขปัญหาหนี้ยุโรป ในขณะที่ตัวเลขเศรษฐกิจสหรัฐบ่งชี้ภาวะฟื้นตัว ในขณะที่ S50U12 ระหว่างวันวกกลับปิดขึ้น 840 ไม่ได้แนวโน้มปรับตัวทดสอบ 835/830 SET50แห่งเทียนสีดำยาวไม่ผ่านขึ้นแนวต้าน ปรับตัวขึ้นขึ้น 840-838 ได้เท่านั้น GFQ12 เก็งกำไรในกรอบ 24,160-24,290 GFV12 เก็งกำไรในกรอบ 24,240-24,380 SVQ12 เก็งกำไรระยะสั้นในกรอบ 888-900 SVV12 เก็งกำไรระยะสั้นในกรอบ 892-911

กลยุทธ์ การปรับตัวในกลุ่มพลังงานและกลุ่มธนาคาร เป็นจังหวะในการเข้าซื้อถือระยะสั้นหรือซื้อเล่นรอบ แนวโน้มแรงซื้อจะกลับเข้าซื้อเก็งกำไรกลุ่มเกษตร STA CM CPI กลุ่มอาหาร CPF MALEEเน้นขึ้น 87.00 TVO แนวต้าน 30 กลุ่มโรงพยาบาล กลุ่มอสังหาริมทรัพย์ SC TTCL หุ้นรายหลักทรัพย์ VIH TFD SITHAI KTC STANLY BCH SMM ระยะกลาง ถือ / ซื้อคืนเมื่อปรับลงแรง

หุ้นแนะนำพิเศษ

KTB (ราคาปิด 17 ชื่อ เป้าหมาย 26 บาท) : เรามีมุมมองเชิงบวกต่อปัจจัยพื้นฐานของ KTB จากการเป็นแบงก์รัฐซึ่งส่งผลบวกต่อการเติบโตของผลประโยชน์ประกอบการในอนาคต อย่างไรก็ตาม การที่ฐานเงินทุนต่ำที่สุดในกลุ่มธนาคารขนาดใหญ่ จากที่มีอัตราส่วนเงินกองทุนทั้งหมดต่อสินทรัพย์เสี่ยงที่ 12.91% (อัตราส่วนเงินกองทุนชั้นที่ 1 (Tier I = 7.92%) แม้สูงกว่าเกณฑ์ขั้นต่ำที่ 8.5% ของธนาคารแห่งประเทศไทย แต่ต่ำที่สุดในกลุ่มธนาคารขนาดใหญ่ คงประมาณการกำไรสุทธิทั้งปีราว 2.4 หมื่นล้านบาท เติบโต 41% YoY

หุ้นเด่นรายวัน

SPPT (ราคาปิด 4.84 ชื่อเป้าปี 56 เท่ากับ 7 บาท) แนวโน้มผลประกอบการในปี55และปี56 เติบโตต่อเนื่องจากการลดต้นทุนและการผลิตที่คาดว่าจะกลับมาดำเนินงานได้ตามปกติหลังอุทกภัย รวมถึงการซื้อหุ้นคืน9.99% ช่วงเดือนกันยายน จะเป็นแรงหนุนให้ราคาหุ้นปรับตัวเพิ่มสูงขึ้น

CENTEL (ราคาปิด 16.40 ชื่อเก็งกำไร) บริษัทมั่นใจผลประกอบการ

2H55เติบโตต่อเนื่องจากความเชื่อมั่นของนักลงทุนที่กลับมามีขึ้นอีกครั้ง ประกอบกับบริษัทเตรียมลงทุนกว่า 700 ล้านบาท เพื่อหาพื้นที่จัดชายทะเลรองรับนักท่องเที่ยวต่างชาติ ตั้งเป้ารายได้ปี 55 ที่ระดับ 1.4 หมื่นล้านบาท (ที่มา : ทัพหุ่น)

ปัจจัยบวก	ปัจจัยลบ
<ul style="list-style-type: none"> + รอยเตอร์/มหาวิทยาลัยมิชิแกนรายงานดัชนีความเชื่อมั่นผู้บริโภคของสหรัฐในช่วงต้นเดือนส.ค.อยู่ที่ระดับ 73.6 จุดเพิ่มขึ้นจาก 72.3 จุดในเดือนก่อนหน้า และมากกว่าที่นักวิเคราะห์คาดว่าจะอยู่ที่ระดับ 72.2 จุด + ดัชนีความผันผวน VIX Index ซึ่งเป็นดัชนีวัดความวิตกกังวลของตลาดหุ้น ร่วงลงสู่ระดับต่ำกว่า 13.43จุดซึ่งเป็นระดับต่ำสุดในรอบกว่า 5 ปี สะท้อนให้เห็นถึงมุมมองที่เป็นบวกต่อตลาด + คอนเฟอเรนซ์ บอร์ดรายงานดัชนีชี้แนวโน้มเศรษฐกิจของสหรัฐในเดือนก.ค. เพิ่มขึ้น 0.4% จากที่ลดลง 0.4%ในเดือนมิ.ย.และมากกว่าที่นักวิเคราะห์คาดว่าจะเพิ่มขึ้นเพียง 0.2% 	<ul style="list-style-type: none"> - ตลาดหลักทรัพย์รายงานผลประกอบการของบริษัทจดทะเบียนในช่วง 6 เดือนแรกของปี 55 มีกำไรสุทธิ รวม 344,415 ล้านบาท ลดลง 13.58% จากงวดเดียวกันของปีก่อน ซึ่งมีกำไรรวม 398,541 ล้านบาท สาเหตุหลักมาจากต้นทุนขายที่เพิ่มขึ้น

ปัจจัยที่ต้องจับตา

ในประเทศ	ต่างประเทศ
<ul style="list-style-type: none"> ➢ 20 ส.ค. สภาพัฒน์ฯแถลงตัวเลข GDP 2Q55 ➢ 23 ส.ค. ศาลนัดฟังคำสั่งคดีกลุ่มพันธมิตรฯ ชุมนุมปิดล้อมสนามบินรัฐสภา ทำเนียบรัฐบาล ➢ สัปดาห์ที่ 4 กระทรวงพาณิชย์แถลงตัวเลขการส่งออกของไทย ➢ สัปดาห์ที่ 4 สำนักงานเศรษฐกิจการคลัง(สศค.)รายงานภาวะเศรษฐกิจการคลัง / กรมธุรกิจพลังงานแถลงสถานการณ์การใช้พลังงานประจำเดือน ➢ 28 ส.ค. สำนักงานเศรษฐกิจอุตสาหกรรม(สศอ.)แถลงดัชนีอุตสาหกรรมประจำเดือน ➢ 31 ส.ค. ธปท.รายงานภาวะเศรษฐกิจไทยประจำเดือน 	<ul style="list-style-type: none"> ➢ 21 ส.ค.55 ธนาคารกลางออสเตรเลียเปิดเผยรายงานการประชุมประจำเดือนสิงหาคม ➢ 22 ส.ค.55สหรัฐรายงานยอดขายบ้านมือสองเดือนก.ค. ➢ คณะกรรมการกำหนดนโยบายการเงินของธนาคารกลางสหรัฐ (FOMC)เผยแพร่รายงานการประชุม

รายชื่อหลักทรัพย์ที่ติดเกณฑ์บัญชี Cash Balance

* SLC	มีผลบังคับใช้ 6 ถึง 24 ส.ค. 55
* WAVE	มีผลบังคับใช้ 6 ถึง 24 ส.ค. 55
* TH	มีผลบังคับใช้ 14 ส.ค. ถึง 31 ส.ค. 55
* AH	มีผลบังคับใช้ 20 ส.ค.ถึง 7 ก.ย. 55
* LL	มีผลบังคับใช้ 20 ส.ค.ถึง 7 ก.ย. 55
* MLINK	มีผลบังคับใช้ 20 ส.ค.ถึง 7 ก.ย. 55
* FOCUS-W1	มีผลบังคับใช้ 20 ส.ค.ถึง 7 ก.ย. 55

***เนื่องจากการลงทุนในหลักทรัพย์ ดังกล่าวมีการซื้อขายคิดไปจากสภาพปกติของตลาดดังนั้นผู้ลงทุนควรศึกษาข้อมูลก่อนการตัดสินใจลงทุน

สรุปภาวะตลาดต่างประเทศ

ตลาดหุ้นดาวโจนส์	เพิ่มขึ้น 25.09 จุด	ตลาดน้ำมัน NYMEX	เพิ่มขึ้น 0.41 เหรียญ
------------------	---------------------	------------------	-----------------------

ดัชนีตลาดหุ้นดาวโจนส์ปิดตลาดปรับตัวเพิ่มขึ้น 25.09 จุด ตลาดได้แรงหนุนจากการรายงานตัวเลขเศรษฐกิจที่สดใสของสหรัฐและตัวเลข VIX Index ซึ่งเป็นดัชนีวัดความกลัวของตลาดหุ้นปรับตัวลดลงสู่ระดับต่ำสุดในรอบกว่า 5 ปี โดยเมื่อวันศุกร์รอยเตอร์/มหาวิทยาลัยมิชิแกนรายงานดัชนีความเชื่อมั่นผู้บริโภคของสหรัฐในช่วงต้นเดือนส.ค.อยู่ที่ระดับ 73.6 จุดเพิ่มขึ้นจาก 72.3 จุดในเดือนก่อนหน้า และมากกว่าที่นักวิเคราะห์คาดว่าจะอยู่ที่ระดับ 72.2 จุด และคอนเฟอเรนซ์ บอร์ครายงานดัชนีชี้ราคาเศรษฐกิจของสหรัฐในเดือนก.ค. เพิ่มขึ้น 0.4% จากที่ลดลง 0.4% ในเดือนมิ.ย. และมากกว่าที่นักวิเคราะห์คาดว่าจะเพิ่มขึ้นเพียง 0.2% ขณะเดียวกับดัชนี VIX Index ในวันศุกร์ปรับตัวลดลงสู่ระดับ 13.43 จุด ซึ่งนับเป็นระดับต่ำสุดในรอบกว่า 5 ปี ทำให้ปิดตลาดดัชนีดาวโจนส์เพิ่มขึ้น 25.09 จุด หรือ 0.19% ปิดที่ 13,275.20 จุด ดัชนี S&P 500 เพิ่มขึ้น 2.65 จุด หรือ 0.19% ปิดที่ 1,418.16 จุด และดัชนี Nasdaq เพิ่มขึ้น 14.20 จุด หรือ 0.46% ปิดที่ 3,076.59 จุด

ราคาน้ำมันดิบที่ตลาดล่วงหน้า NYMEX ส่งมอบเดือนก.ย. เพิ่มขึ้น 41 เซนต์ ราคาน้ำมันดิบได้แรงหนุนเช่นเดียวกับตลาดหุ้นวอลสตรีทคือ นักลงทุนขานรับตัวเลขเศรษฐกิจที่สดใสของสหรัฐคือตัวเลขดัชนีความเชื่อมั่นของผู้บริโภคที่ปรับตัวเพิ่มขึ้นสู่ระดับสูงสุดนับตั้งแต่เดือนพ.ค. และดัชนีชี้ราคาเศรษฐกิจที่กลับมาขยายตัวจากที่หดตัวในเดือนก่อนหน้า อย่างไรก็ตามในส่วนของน้ำมันดิบ BRENT ปรับตัวลดลงเพราะถูกกดดันจากข่าวที่ EIA เตรียมพิจารณาขายน้ำมันจากคลังสำรองทางยุทธศาสตร์ (SPR) เพื่อควบคุมราคาเชื้อเพลิงที่อยู่ในระดับสูงในรอบ 3 เดือน และลดต้นทุนพลังงานทำให้ปิดตลาดราคาน้ำมันดิบ NYMEX เพิ่มขึ้น 41 เซนต์ หรือ 0.43% ปิดที่ 96.01 ดอลลาร์/บาร์เรล ส่วนราคาน้ำมันดิบ BRENT ลดลง 1.56 ดอลลาร์ หรือ 1.35% ปิดที่ 113.71 ดอลลาร์/บาร์เรล

ตลาดหุ้นหนักเกอ

ตลาดมีโอกาสเข้าซื้อเพิ่มขึ้นอีกเนื่องจากการคาดการณ์การดำเนินการเพิ่มเติมจากอีซีบีเพื่อต่อสู้กับวิกฤตหนี้ และข้อมูลเศรษฐกิจที่แข็งแกร่งเกินคาดของสหรัฐ โดยเฉพาะดัชนีความเชื่อมั่นฯ ระยะสั้นมีโอกาสขึ้นแนวรับ 9,130 และ 9,000 ได้มั่นคง หลังปรับตัวสร้างฐานราคาเหนือ SMA ได้อย่างมีนัยสำคัญ แนวโน้มดัชนีมีโอกาสที่จะกลับตัวขึ้นต่อเนื่องเพื่อทดสอบแนวต้านตามขึ้นบันได 9,330 / 9,500

ตลาดหุ้นอสัง

การปรับตัวทดสอบขึ้นแนวรับ 20,000 ขึ้นมาเป็นสัญญาณบวกด้านเทคนิค รวมทั้งมีแรงซื้อเก็งกำไรเพิ่มมากขึ้นหลังตลาดคลายความกังวลหลังเยอรมันจะให้การสนับสนุนต่อมาตรการการเข้าซื้อพันธบัตรของ ECB รวมทั้งตัวเลขดัชนีความเชื่อมั่นผู้บริโภคที่เพิ่มสูงขึ้นเกินคาดช่วยเพิ่มความหวังว่าเศรษฐกิจสหรัฐกำลังฟื้นตัว แนวโน้มระยะสั้นระดับดัชนีมีโอกาสทดสอบจุดสูงเดิม 20,300 / 20,500

Analyst – รัชชัย 02-6725993 tawatchai@globlex.co.th

วิลาสินี 02-6725937 wilasinee@globlex.co.th

อาทิตย์ 02-6725946 artit@globlex.co.th

NVDR Trading Value (Million Baht)

8/20/2012

TOP 30 NVDR BUY					TOP 30 NVDR SELL				
Company	Buy	Sell	Total	Net	Company	Buy	Sell	Total	Net
TMB	50.5	0.9	51.4	49.6	BLAND	0.0	13.2	13.6	-12.7
CPALL	9.6	0.3	9.9	9.3	SIRI	0.0	12.3	13.6	-11.1
TVO	6.5	0.2	6.7	6.3	GJS	0.0	4.1	4.1	-4.1
KTB	8.2	2.5	10.7	5.7	SLC-W3	0.0	3.4	3.6	-3.3
INTUCH	4.9	0.1	5.0	4.8	E-W1	0.0	3.2	3.2	-3.2
HEMRAJ	5.1	1.9	7.0	3.2	TWZ	0.0	3.0	3.1	-2.9
SUPER	3.6	0.9	4.4	2.7	BTS-W2	0.0	2.5	2.5	-2.5
TCAP	2.6	0.0	2.6	2.6	AMATA	0.0	2.5	2.5	-2.4
EARTH	2.6	0.0	2.6	2.6	BAY	0.0	2.6	2.8	-2.4
LH	3.7	1.2	4.9	2.5	UKEM	0.0	2.3	2.3	-2.3
CPF	4.0	1.5	5.5	2.5	BTS	0.0	2.7	3.7	-1.7
IRPC	2.7	0.4	3.1	2.3	THRE	0.0	3.0	4.6	-1.5
GSTEEL	2.0	0.1	2.1	1.9	SAMART	0.0	1.1	1.1	-1.1
SPALI	2.0	0.1	2.2	1.9	GLOBAL	0.0	1.0	1.0	-1.0
DTAC	2.0	0.5	2.5	1.5	KBANK	0.0	1.5	2.1	-0.9
MIDA	1.4	0.0	1.4	1.4	QH	0.0	0.9	0.9	-0.9
TUF	1.2	0.0	1.2	1.2	CSL	0.0	1.4	1.9	-0.9
BLAND	1.3	0.1	1.4	1.1	CIMBT	0.0	1.0	1.2	-0.8
MDX	1.2	0.1	1.2	1.1	HTECH	0.0	0.7	0.7	-0.7
SLC-W2	1.1	0.0	1.1	1.1	PYLON	0.0	0.6	0.6	-0.6
UPOIC	1.1	0.1	1.2	1.0	HMPRO	0.0	0.7	0.7	-0.6
CIMBT	1.0	0.0	1.0	1.0	EASON	0.0	0.6	0.6	-0.6
STEC	0.9	0.0	1.0	0.9	ASP	0.0	0.6	0.6	-0.6
LOXLEY	0.8	0.0	0.8	0.8	AIT	0.0	0.5	0.6	-0.5
VNG	0.9	0.0	0.9	0.8	ROJNA-W3	0.0	0.5	0.6	-0.4
PTT	1.1	0.4	1.5	0.7	BLAND-W2	0.0	0.3	0.3	-0.3
HMPRO	0.8	0.1	0.9	0.7	GOLD-W1	0.0	0.4	0.5	-0.3
CM	0.8	0.1	0.9	0.7	ITD	0.0	0.4	0.5	-0.3
ADVANC	0.9	0.2	1.1	0.6	NCH	0.0	0.4	0.5	-0.3
PSL	0.7	0.1	0.8	0.6	SPCG-W1	0.0	0.3	0.3	-0.3

Source : ตลาดหลักทรัพย์แห่งประเทศไทย

SBL Table

8/20/2012					
Date	TICKER/Sector	Recently Close	Recommend Short	Target Price	Recommendation
8/20/2012	-	-	-	-	-

Dividend Table

Symbol	X-Date	Payment Date	Operation Period	Dividend (per share)	Unit	Type	Market / Industry / Sector
ARIP	20/8/2012	5/9/2012	01/01/2012 - 30/06/2012	0.04	Baht	Cash	mai /-/MIDSIZE
BEC	20/8/2012	6/9/2012	01/01/2012 - 30/06/2012	1	Baht	Cash	SET /SERVICE /MEDIA
EPCO	20/8/2012	4/9/2012	01/01/2012 - 30/06/2012	0.045	Baht	Cash	SET /SERVICE /MEDIA
HTECH	20/8/2012	3/9/2012	01/01/2012 - 30/06/2012	0.12	Baht	Cash	mai /-/MIDSIZE
IT	20/8/2012	30/8/2012	01/04/2012 - 30/06/2012	0.07	Baht	Cash	SET /SERVICE /COMM
M-AAA	20/8/2012	6/9/2012	01/05/2012 - 31/07/2012	0.198	Baht	Cash	SET /PROPCON /PFUND
SPF	20/8/2012	6/9/2012		0.27	Baht	Cash	SET /PROPCON /PFUND
SRICHA	20/8/2012	6/9/2012	01/01/2012 - 30/06/2012	1	Baht	Cash	SET /PROPCON /PROP
TUF	20/8/2012	31/8/2012	01/01/2012 - 30/06/2012	1.1	Baht	Cash	SET /AGRO /FOOD
ADVANC	21/8/2012	6/9/2012	01/01/2012 - 30/06/2012	5.9	Baht	Cash	SET /TECH /ICT
AS	21/8/2012	5/9/2012	01/04/2012 - 30/06/2012	0.34	Baht	Cash	SET /SERVICE /MEDIA
BAFS	21/8/2012	4/9/2012	01/01/2012 - 30/06/2012	0.27	Baht	Cash	SET /RESOURC /ENERG
BOL	21/8/2012	3/9/2012	01/01/2012 - 30/06/2012	0.04	Baht	Cash	mai /-/MIDSIZE
BROOK	21/8/2012	7/9/2012		0.06	Baht	Cash	mai /-/MIDSIZE
GC	21/8/2012	6/9/2012	01/01/2012 - 30/06/2012	0.17	Baht	Cash	SET /INDUS /PETRO
IFEC	21/8/2012	7/9/2012	01/04/2012 - 30/06/2012	0.03	Baht	Cash	SET /CONSUMP /HOME
KIAT	21/8/2012	7/9/2012	01/01/2012 - 30/06/2012	0.25	Baht	Cash	mai /-/MIDSIZE
LPN	21/8/2012	4/9/2012	01/01/2012 - 30/06/2012	0.23	Baht	Cash	SET /PROPCON /PROP
MAKRO	21/8/2012	7/9/2012	01/01/2012 - 30/06/2012	3.5	Baht	Cash	SET /SERVICE /COMM
MBKET	21/8/2012	5/9/2012	01/01/2012 - 30/06/2012	0.35	Baht	Cash	SET /FINCIAL /FIN
OFM	21/8/2012	7/9/2012	01/01/2012 - 30/06/2012	0.2	Baht	Cash	mai /-/MIDSIZE
OISHI	21/8/2012	7/9/2012	01/01/2012 - 30/06/2012	1.6	Baht	Cash	SET /AGRO /FOOD
RS	21/8/2012	5/9/2012	01/01/2012 - 30/06/2012	0.1	Baht	Cash	SET /SERVICE /MEDIA
SAT	21/8/2012	6/9/2012	01/01/2012 - 30/06/2012	0.3	Baht	Cash	SET /INDUS /AUTO
SE-ED	21/8/2012	6/9/2012	01/04/2012 - 30/06/2012	0.1	Baht	Cash	SET /SERVICE /MEDIA
SMIT	21/8/2012	6/9/2012	01/01/2012 - 30/06/2012	0.14	Baht	Cash	SET /INDUS /STEEL
SYMC	21/8/2012	5/9/2012	01/01/2012 - 30/06/2012	0.15	Baht	Cash	SET /TECH /ICT
TK	21/8/2012	6/9/2012	01/01/2012 - 30/06/2012	0.37	Baht	Cash	SET /FINCIAL /FIN
TOG	21/8/2012	5/9/2012	01/01/2012 - 30/06/2012	0.1	Baht	Cash	SET /CONSUMP /PERSON
UEC	21/8/2012	7/9/2012	01/04/2012 - 30/06/2012	0.06	Baht	Cash	mai /-/MIDSIZE
UPOIC	21/8/2012	5/9/2012	01/01/2012 - 30/06/2012	0.3	Baht	Cash	SET /AGRO /AGRI
UTP	21/8/2012	7/9/2012	01/01/2012 - 30/06/2012	0.2	Baht	Cash	SET /INDUS /PAPER
AIT	22/8/2012	-	01/01/2012 - 30/06/2012	1.25	Baht	Cash	SET /TECH /ICT
BJC	22/8/2012	7/9/2012		0.32	Baht	Cash	SET /SERVICE /COMM
BKI	22/8/2012	7/9/2012	01/04/2012 - 30/06/2012	2.75	Baht	Cash	SET /FINCIAL /INSUR
CNT	22/8/2012	10/9/2012	01/04/2012 - 30/06/2012	0.1	Baht	Cash	SET /PROPCON /PROP
CPF	22/8/2012	7/9/2012	01/01/2012 - 30/06/2012	0.6	Baht	Cash	SET /AGRO /FOOD
CSL	22/8/2012	6/9/2012	01/01/2012 - 30/06/2012	0.3	Baht	Cash	SET /TECH /ICT
DEMCO	22/8/2012	7/9/2012	01/01/2012 - 30/06/2012	0.17	Baht	Cash	SET /RESOURC /ENERG
HEMRAJ	22/8/2012	7/9/2012	01/01/2012 - 30/06/2012	0.04	Baht	Cash	SET /PROPCON /PROP
JMART	22/8/2012	7/9/2012	01/01/2012 - 30/06/2012	0.22	Baht	Cash	SET /TECH /ICT
KAMART	22/8/2012	5/9/2012	01/04/2012 - 30/06/2012	0.05	Baht	Cash	SET /SERVICE /COMM
NBC	22/8/2012	6/9/2012	01/04/2012 - 30/06/2012	0.06	Baht	Cash	mai /-/MIDSIZE

Dividend Table

Symbol	X-Date	Payment Date	Operation Period	Dividend (per share)	Unit	Type	Market / Industry / Sector
PHOL	22/8/2012	7/9/2012		0.11	Baht	Cash	mai /-/MIDSIZE
SABINA	22/8/2012	6/9/2012	01/01/2012 - 30/06/2012	0.065	Baht	Cash	SET /CONSUMP /FASHION
SWC	22/8/2012	7/9/2012	01/01/2012 - 30/06/2012	0.2	Baht	Cash	mai /-/MIDSIZE
TNITY	22/8/2012	7/9/2012	01/01/2012 - 30/06/2012	0.12	Baht	Cash	SET /FINCIAL /FIN
TPA	22/8/2012	7/9/2012	01/01/2012 - 30/06/2012	2	Baht	Cash	SET /INDUS /PETRO
UVAN	22/8/2012	-	01/01/2012 - 30/06/2012	2	Baht	Cash	SET /AGRO /AGRI
AI	23/8/2012	7/9/2012		0.1	Baht	Cash	SET /RESOURC /ENERG
JUBILE	23/8/2012	6/9/2012	01/01/2012 - 30/06/2012	0.3	Baht	Cash	mai /-/MIDSIZE
MACO	23/8/2012	7/9/2012	01/01/2012 - 30/06/2012	0.2	Baht	Cash	mai /-/MIDSIZE
PM	23/8/2012	10/9/2012	01/01/2012 - 30/06/2012	0.12	Baht	Cash	SET /AGRO /FOOD
TFUND	23/8/2012	11/9/2012		0.16	Baht	Cash	SET /PROPCON /PFUND
TLOGIS	23/8/2012	11/9/2012		0.2	Baht	Cash	SET /PROPCON /PFUND
TNDT	23/8/2012	7/9/2012	01/01/2012 - 30/06/2012	0.1	Baht	Cash	mai /-/MIDSIZE
TTCL	23/8/2012	7/9/2012	01/01/2012 - 30/06/2012	0.2	Baht	Cash	SET /PROPCON /PROP
TVO	23/8/2012	7/9/2012		0.8	Baht	Cash	SET /AGRO /FOOD
BCH	24/8/2012	6/9/2012	01/01/2012 - 30/06/2012	0.15	Baht	Cash	SET /SERVICE /HEALTH
BH	24/8/2012	7/9/2012	01/01/2012 - 30/06/2012	0.6	Baht	Cash	SET /SERVICE /HEALTH
BH-P	24/8/2012	7/9/2012	01/01/2012 - 30/06/2012	0.6	Baht	Cash	SET /-/-
BLA	24/8/2012	-	01/01/2012 - 30/06/2012	0.36	Baht	Cash	SET /FINCIAL /INSUR
ECL	24/8/2012	10/9/2012	01/01/2012 - 30/06/2012	0.04	Baht	Cash	SET /FINCIAL /FIN
GLOW	24/8/2012	13/9/2012	01/01/2012 - 30/06/2012	0.81	Baht	Cash	SET /RESOURC /ENERG
IHL	24/8/2012	10/9/2012	01/01/2012 - 30/06/2012	0.15	Baht	Cash	SET /INDUS /AUTO
KCAR	24/8/2012	7/9/2012	01/01/2012 - 30/06/2012	0.43	Baht	Cash	SET /FINCIAL /FIN
LH	24/8/2012	12/9/2012	01/01/2012 - 30/06/2012	0.2	Baht	Cash	SET /PROPCON /PROP
LHPF	24/8/2012	12/9/2012	20/03/2012 - 30/06/2012	0.19317	Baht	Cash	SET /PROPCON /PFUND
MAJOR	24/8/2012	11/9/2012	01/01/2012 - 30/06/2012	0.39	Baht	Cash	SET /SERVICE /MEDIA
MK	24/8/2012	12/9/2012	01/01/2012 - 30/06/2012	0.1	Baht	Cash	SET /PROPCON /PROP
QHPF	24/8/2012	12/9/2012	01/04/2012 - 30/06/2012	0.182	Baht	Cash	SET /PROPCON /PFUND
QLT	24/8/2012	6/9/2012		0.2	Baht	Cash	mai /-/MIDSIZE
SAMART	24/8/2012	12/9/2012		0.2	Baht	Cash	SET /TECH /ICT
SENA	24/8/2012	7/9/2012	01/01/2012 - 30/06/2012	0.082	Baht	Cash	SET /PROPCON /PROP
SPALI	24/8/2012	10/9/2012	01/01/2012 - 30/06/2012	0.3	Baht	Cash	SET /PROPCON /PROP
AH	27/8/2012	12/9/2012	01/01/2012 - 30/06/2012	0.488	Baht	Cash	SET /INDUS /AUTO
AH-PA	27/8/2012	12/9/2012	01/01/2012 - 30/06/2012	0.488	Baht	Cash	-/-/-
CCET	27/8/2012	7/9/2012	01/01/2012 - 30/06/2012	0.08	Baht	Cash	SET /TECH /ETRON
CTARAF	27/8/2012	7/9/2012		0.153	Baht	Cash	SET /PROPCON /PFUND
GOLDPF	27/8/2012	7/9/2012	01/01/2012 - 30/06/2012	0.1525	Baht	Cash	SET /PROPCON /PFUND
INTUCH	27/8/2012	12/9/2012	30/03/2012 - 13/08/2012	2.2	Baht	Cash	SET /TECH /ICT
IVL	27/8/2012	6/9/2012	01/01/2012 - 30/06/2012	0.18	Baht	Cash	SET /INDUS /PETRO
KBS	27/8/2012	7/9/2012	01/01/2012 - 30/06/2012	0.2	Baht	Cash	SET /AGRO /FOOD
MJLF	27/8/2012	7/9/2012	01/01/2012 - 30/06/2012	0.25	Baht	Cash	SET /PROPCON /PFUND
MNIT	27/8/2012	13/9/2012		0.1	Baht	Cash	SET /PROPCON /PFUND
MNIT2	27/8/2012	13/9/2012		0.188	Baht	Cash	SET /PROPCON /PFUND

Dividend Table

Symbol	X-Date	Payment Date	Operation Period	Dividend (per share)	Unit	Type	Market / Industry / Sector
MNRF	27/8/2012	13/9/2012	01/04/2012 - 30/06/2012	0.198	Baht	Cash	SET /PROPCON /PFUND
M-STOR	27/8/2012	13/9/2012	01/04/2012 - 30/06/2012	0.213	Baht	Cash	SET /PROPCON /PFUND
S&P	27/8/2012	-	01/01/2012 - 30/06/2012	1.5	Baht	Cash	SET /AGRO /FOOD
SAMTEL	27/8/2012	10/9/2012	01/01/2012 - 30/06/2012	0.25	Baht	Cash	SET /TECH /ICT
SPACK	27/8/2012	12/9/2012	01/01/2012 - 30/06/2012	0.17	Baht	Cash	SET /INDUS /PKG
SPORT	27/8/2012	14/9/2012	01/01/2012 - 30/06/2012	0.07	Baht	Cash	SET /SERVICE /MEDIA
TLUXE	27/8/2012	10/9/2012	01/01/2012 - 30/06/2012	0.11	Baht	Cash	SET /AGRO /AGRI
UBIS	27/8/2012	7/9/2012	01/01/2012 - 30/06/2012	0.09	Baht	Cash	mai /-/MIDSIZE
WORK	27/8/2012	-	01/01/2012 - 30/06/2012	0.8	Baht	Cash	SET /SERVICE /MEDIA
BKKCP	28/8/2012	14/9/2012	01/04/2012 - 30/06/2012	0.16	Baht	Cash	SET /PROPCON /PFUND
FUTUREPF	28/8/2012	14/9/2012	01/04/2012 - 30/06/2012	0.312	Baht	Cash	SET /PROPCON /PFUND
KTB	28/8/2012	3/10/2012	01/01/2012 - 30/06/2012	0.36	Baht	Cash	SET /FINCIAL /BANK
KTB-P	28/8/2012	3/10/2012	01/01/2012 - 30/06/2012	0.43725	Baht	Cash	SET /-/-
LALIN	28/8/2012	7/9/2012	01/01/2012 - 30/06/2012	0.06	Baht	Cash	SET /PROPCON /PROP
MIPF	28/8/2012	14/9/2012	01/01/2012 - 30/06/2012	0.45	Baht	Cash	SET /PROPCON /PFUND
PFFUND	28/8/2012	14/9/2012	01/01/2012 - 30/06/2012	0.395	Baht	Cash	SET /PROPCON /PFUND
QHOP	28/8/2012	12/9/2012	01/04/2012 - 30/06/2012	0.2	Baht	Cash	SET /PROPCON /PFUND
SGP	28/8/2012	10/9/2012	01/01/2012 - 30/06/2012	0.15	Baht	Cash	SET /RESOURC /ENERG
TIF1	28/8/2012	14/9/2012	01/04/2012 - 30/06/2012	0.0778	Baht	Cash	SET /PROPCON /PFUND
TKS	28/8/2012	13/9/2012	01/01/2012 - 30/06/2012	0.1	Baht	Cash	SET /SERVICE /MEDIA
TU-PF	28/8/2012	12/9/2012	01/04/2012 - 30/06/2012	0.072	Baht	Cash	SET /PROPCON /PFUND
DSGT	25/9/2012	12/10/2012		0.1	Baht	Cash	SET /CONSUMP /PERSON

SET NOTICE CALENDAR

16/8/2012

GSTEEL XR 15 : 1 @ 0.50 บาท
 GSTEEL XW 0 : 0 @ 0.002 บาท

17/8/2012

TICON XT 8 : 1

20/8/2012

URBNPF XN หน่วยลงทุนละ 0.09 บาท

22/8/2012

SMPC XR 4 : 1 @ 10.00 บาท

23/8/2012

SMM XW 4 : 1

28/8/2012

KTB XR 4 : 1 @ 12.60 บาท
 KTB-P XR 4 : 1 @ 12.60 บาท

4/9/2012

AIT-W1 XE 1 : 1 @ 16.50 บาท

18/9/2012

GL XW 3 : 1 @ 0.10 บาท

Notes: PD = Payment Date SD = Subscript Date
 XN = Capital Return

XR = Rights for Common
 XW = Rights for Warrant

XT = Rights for Transferable Subscription Right
 XM = Excluding Meetings

The opinions and information presented in this report are those of the Globlex Securities Co. Ltd. Research Department. No representation or warranty in any form regarding the accuracy, completeness, correctness or fairness of opinions and information of this report is offered by Globlex Securities Co. Ltd. Globlex Securities Co. Ltd. accepts no liability whatsoever for any loss arising from the use of this report or its contents. This report (in whole or in part) may not be reproduced or published without the express permission of Globlex Securities Co. Ltd.

Derivative Warrant Table 20 August 2012

DW	Type of Option	DW Price	Stock Price	Price by Black Scholes Model	Status	Time to maturity			Gearing Ratio(x)	Premium	Exercise Price	Exercise Ratio	Expire Date	Last Trading Day	DW Issued(mn)	Implied Volatility	Cumulative Volume/ Outstanding Units
						y.	m.	d.									
ADVA01CC	Call	1.27	208.00	0.92	Out of the Money	0	5	5	4.09	8.56%	175.00000	1 : 40@175	23 Jan 13	22 Jan 13	60.0	60.99%	106.68%
ADVA01PC	Put	1.09	208.00	0.48	Out of the Money	0	5	5	4.77	12.79%	225.00000	1 : 40@195	23 Jan 13	22 Jan 13	60.0	65.94%	4.71%
ADVA08CB	Call	1.22	208.00	1.11	Out of the Money	0	1	23	4.87	2.26%	170.00000	1 : 35@170	12 Oct 12	19 Mar 13	20.0	55.51%	40.86%
ADVA08PA	Put	0.59	208.00	0.07	Out of the Money	0	1	24	14.10	13.34%	195.00000	1 : 25@175	13 Oct 12	8 Oct 12	12.4	69.39%	32.19%
ADVA13CE	Call	1.09	208.00	0.58	Out of the Money	0	7	6	4.77	14.71%	195.00000	1 : 40@195	26 Mar 13	19 Mar 13	31.3	57.84%	7.04%
ADVA13PC	Put	0.53	208.00	0.03	Out of the Money	0	7	6	7.85	28.61%	175.00000	1 : 50@180	26 Mar 13	19 Mar 13	30.0	73.10%	6.33%
ADVA16CA	Call	1.82	208.00	1.11	Out of the Money	0	3	13	5.71	8.85%	190.00000	1 : 20@190	1 Dec 12	26 Nov 12	20.0	63.05%	7.44%
ADVA42CC	Call	0.68	208.00	0.43	Out of the Money	0	6	26	3.82	12.69%	180.00000	1 : 80@67	16 Mar 13	11 Mar 13	20.0	63.78%	3.95%
AOT01CC	Call	0.85	65.50	0.63	Out of the Money	0	5	5	3.85	8.40%	54.00000	1 : 20@54	23 Jan 13	22 Jan 13	50.0	64.40%	8.15%
AOT01PC	Put	1.11	65.50	0.39	Out of the Money	0	5	5	5.90	14.66%	67.00000	1 : 10@50	23 Jan 13	22 Jan 13	26.0	62.21%	0.75%
AOT13CC	Call	0.78	65.50	0.69	Out of the Money	0	1	24	4.20	3.21%	52.00000	1 : 20@52	13 Oct 12	8 Oct 12	30.0	77.70%	12.41%
AOT13PA	Put	0.08	65.50	0.00	Out of the Money	0	1	1	81.88	24.89%	50.00000	1 : 10@530	19 Sep 12	12 Sep 12	22.3	81.35%	0.20%
AOT42CC	Call	0.99	65.50	0.61	Out of the Money	0	6	26	3.31	14.20%	55.00000	1 : 20@55	16 Mar 13	11 Mar 13	20.0	77.35%	1.68%
BANP01CC	Call	0.23	454.00	0.11	Out of the Money	0	2	11	19.74	21.81%	530.00000	1 : 100@490	30 Oct 12	22 Oct 12	135.0	64.33%	64.08%
BANP01PC	Put	1.95	454.00	1.82	Out of the Money	0	2	11	2.33	1.98%	640.00000	1 : 100@640	30 Oct 12	22 Oct 12	24.0	66.30%	23.95%
BANP06CD	Call	0.63	454.00	0.40	Out of the Money	0	5	20	7.21	21.81%	490.00000	1 : 100@450	7 Feb 13	31 Jan 13	20.0	65.09%	5.93%
BANP06PD	Put	1.66	454.00	1.41	Out of the Money	0	5	20	2.73	6.61%	590.00000	1 : 100@590	7 Feb 13	31 Jan 13	20.0	61.82%	0.70%
BANP08CC	Call	0.49	454.00	0.33	Out of the Money	0	2	22	7.72	12.07%	450.00000	1 : 120@615.27	10 Nov 12	5 Nov 12	17.4	68.48%	11.88%
BANP08PB	Put	1.06	454.00	0.76	Out of the Money	0	2	22	4.28	8.81%	520.00000	1 : 100@520	10 Nov 12	5 Nov 12	20.0	75.08%	4.83%
BANP13CF	Call	0.05	454.00	0.01	Out of the Money	0	1	28	46.13	37.69%	615.27000	1 : 196.85039@500	17 Oct 12	10 Oct 12	28.9	76.74%	3.62%
BANP13CG	Call	0.98	454.00	0.64	Out of the Money	0	7	6	4.63	20.70%	450.00000	1 : 100@450	26 Mar 13	19 Mar 13	37.6	71.84%	0.32%
BANP13PC	Put	1.18	454.00	0.79	Out of the Money	0	7	6	3.85	15.86%	500.00000	1 : 100@511.9	26 Mar 13	19 Mar 13	22.1	65.47%	0.25%
BANP18CB	Call	0.01	454.00	0.00	Out of the Money	0	0	27	230.59	39.21%	630.03000	1 : 196.88581@630.03	15 Sep 12	10 Sep 12	45.0	72.64%	4.19%
BANP42CD	Call	0.04	454.00	0.01	Out of the Money	0	0	13	115.32	13.62%	511.90000	1 : 98.4252@24	1 Sep 12	27 Aug 12	19.0	70.94%	14.30%
BANP42PA	Put	1.58	454.00	1.58	In the Money	0	0	13	2.92	-0.18%	610.35000	1 : 98.4252@610.35	1 Sep 12	27 Aug 12	25.0	0.00%	10.52%
BAY01CC	Call	0.96	33.00	0.92	Out of the Money	0	2	11	3.44	1.82%	24.00000	1 : 10@26	30 Oct 12	22 Oct 12	40.0	68.14%	56.96%
BAY01PC	Put	0.27	33.00	0.01	Out of the Money	0	2	11	12.22	17.27%	30.00000	1 : 10@30	30 Oct 12	22 Oct 12	40.0	75.87%	1.79%
BAY08CD	Call	1.02	33.00	0.90	Out of the Money	0	2	25	4.04	3.52%	26.00000	1 : 8@24.48	13 Nov 12	6 Nov 12	19.7	60.43%	0.86%
BAY08PC	Put	0.40	33.00	0.04	Out of the Money	0	2	25	8.25	15.15%	32.00000	1 : 10@32	13 Nov 12	6 Nov 12	19.5	74.93%	0.51%
BAY18CB	Call	0.84	33.00	0.87	In the Money	0	0	27	3.98	-0.69%	24.48000	1 : 9.87273@185	15 Sep 12	10 Sep 12	20.0	-	-

The opinions and information presented in this report are those of the Globlex Securities Co. Ltd. Research Department. No representation or warranty in any form regarding the accuracy, completeness, correctness or fairness of opinions and information of this report is offered by Globlex Securities Co. Ltd. Globlex Securities Co. Ltd. Accepts no liability whatsoever for any loss arising from the use of this report or its contents. This report (in whole or in part) may not be reproduced or published without the express permission of Globlex Securities Co. Ltd.

Derivative Warrant Table 20 August 2012

DW	Type of Option	DW Price	Stock Price	Price by Black Scholes Model	Status	Time to maturity			Gearing Ratio(x)	Premium	Exercise Price	Exercise Ratio	Expire Date	Last Trading Day	DW Issued(mn)	Implied Volatility	Cumulative Volume/ Outstanding Units
						y.	m.	d.									
BAY42CD	Call	0.48	33.00	0.28	Out of the Money	0	6	26	3.44	13.94%	28.00000	1 : 20@28	16 Mar 13	11 Mar 13	20.0	73.38%	1.25%
BBL08CB	Call	0.72	196.50	0.43	Out of the Money	0	3	6	6.82	8.80%	185.00000	1 : 40@161.51	24 Nov 12	19 Nov 12	20.0	61.01%	33.25%
BBL08PB	Put	0.69	196.50	0.05	Out of the Money	0	3	6	14.24	20.51%	170.00000	1 : 20@170	24 Nov 12	19 Nov 12	17.5	67.13%	7.18%
BBL13CC	Call	0.86	196.50	0.74	Out of the Money	0	2	11	4.67	3.62%	161.51000	1 : 48.94763@180	30 Oct 12	22 Oct 12	26.8	73.60%	5.95%
BBL13PB	Put	0.22	196.50	0.01	Out of the Money	0	2	11	18.25	18.30%	171.30000	1 : 48.94763@171.3	30 Oct 12	22 Oct 12	30.0	66.11%	0.00%
BBL18CB	Call	0.53	196.50	0.39	Out of the Money	0	2	12	7.42	5.09%	180.00000	1 : 50@150	31 Oct 12	24 Oct 12	20.0	56.19%	0.83%
BBL18PA	Put	0.17	196.50	0.01	Out of the Money	0	2	12	23.12	20.36%	165.00000	1 : 50@165	31 Oct 12	24 Oct 12	20.0	-	-
BBL42CD	Call	1.45	196.50	1.22	Out of the Money	0	4	3	3.39	5.85%	150.00000	1 : 40@20	22 Dec 12	17 Dec 12	20.0	82.10%	1.29%
BBL42PA	Put	0.70	196.50	0.28	Out of the Money	0	4	3	7.02	12.47%	200.00000	1 : 40@200	22 Dec 12	17 Dec 12	20.0	57.10%	0.10%
BCP01CC	Call	0.61	22.80	0.39	Out of the Money	0	3	25	4.67	9.12%	20.00000	1 : 8@21	14 Dec 12	6 Dec 12	50.0	69.14%	4.08%
BCP01PC	Put	0.99	22.80	0.53	Out of the Money	0	3	25	4.61	9.87%	25.50000	1 : 5@25.5	14 Dec 12	6 Dec 12	25.0	65.77%	3.32%
BCP08CB	Call	0.63	22.80	0.37	Out of the Money	0	3	6	6.03	8.68%	21.00000	1 : 6@45	24 Nov 12	19 Nov 12	19.6	62.53%	1.61%
BCP42CC	Call	0.57	22.80	0.27	Out of the Money	0	6	26	4.00	17.11%	21.00000	1 : 10@21	16 Mar 13	11 Mar 13	20.0	71.17%	0.01%
BEC01CA	Call	0.72	54.75	0.56	Out of the Money	0	3	25	3.80	8.49%	45.00000	1 : 20@100	14 Dec 12	6 Dec 12	44.4	82.53%	1.36%
BGH01CA	Call	1.81	100.00	1.82	In the Money	0	0	20	2.80	-0.02%	64.22000	1 : 19.75894@64.22	8 Sep 12	3 Sep 12	24.0	0.00%	24.73%
BGH01PA	Put	0.41	100.00	0.09	Out of the Money	0	0	20	16.26	6.15%	100.00000	1 : 15@71.14	8 Sep 12	3 Sep 12	20.0	81.48%	5.84%
BGH08CB	Call	-	100.00	0.40	-	0	5	1	-	-	90.00000	1 : 30@90	19 Jan 13	14 Jan 13	20.0	-	-
BGH13CC	Call	1.54	100.00	1.48	Out of the Money	0	1	28	3.29	1.57%	71.14000	1 : 19.75894@77.06	17 Oct 12	10 Oct 12	28.9	68.68%	0.54%
BGH13CD	Call	1.09	100.00	0.43	Out of the Money	0	5	27	4.59	16.80%	95.00000	1 : 20@95	14 Feb 13	7 Feb 13	33.6	68.30%	8.88%
BGH13PA	Put	0.30	100.00	0.00	Out of the Money	0	1	8	33.74	25.90%	77.06000	1 : 9.88045@57	27 Sep 12	20 Sep 12	15.0	-	-
BGH42CB	Call	1.52	100.00	0.23	Out of the Money	0	6	26	1.64	55.80%	95.00000	1 : 40@95	16 Mar 13	11 Mar 12	20.0	66.49%	6.32%
BH01CA	Call	1.22	76.25	1.00	Out of the Money	0	3	25	3.13	6.75%	57.00000	1 : 20@77	14 Dec 12	6 Dec 12	35.1	86.11%	6.54%
BH13CB	Call	3.12	76.25	3.15	In the Money	0	2	1	2.44	-0.07%	45.00000	1 : 10@45	20 Oct 12	15 Oct 12	26.1	100.57%	0.57%
BH13CC	Call	0.72	76.25	0.19	Out of the Money	0	5	27	5.30	19.87%	77.00000	1 : 20@179	14 Feb 13	7 Feb 13	46.8	68.44%	0.56%
BIGC01CB	Call	1.84	187.50	1.83	Out of the Money	0	0	20	3.44	0.23%	133.39000	1 : 29.63841@133.39	8 Sep 12	3 Sep 12	20.0	0.00%	47.65%
BIGC08CB	Call	-	187.50	0.37	-	0	5	1	-	-	179.00000	1 : 50@138.33	19 Jan 13	14 Jan 13	19.9	-	-
BIGC13CA	Call	0.53	187.50	0.14	Out of the Money	0	4	6	7.08	20.80%	200.00000	1 : 50@200	25 Dec 12	18 Dec 12	29.5	68.13%	19.34%
BIGC42CA	Call	2.10	187.50	2.50	In the Money	0	0	13	4.52	-4.09%	138.33000	1 : 19.76285@35	1 Sep 12	27 Aug 12	14.0	-	-
BIGC42CB	Call	0.38	187.50	0.11	Out of the Money	0	6	26	4.93	26.93%	200.00000	1 : 100@200	16 Mar 13	11 Mar 13	20.0	75.00%	1.61%
BJC01CB	Call	0.82	42.50	0.58	Out of the Money	0	5	5	3.46	11.29%	35.00000	1 : 15@44.25	23 Jan 13	22 Jan 13	64.0	75.12%	22.87%

The opinions and information presented in this report are those of the Globlex Securities Co. Ltd. Research Department. No representation or warranty in any form regarding the accuracy, completeness, correctness or fairness of opinions and information of this report is offered by Globlex Securities Co. Ltd. Globlex Securities Co. Ltd. accepts no liability whatsoever for any loss arising from the use of this report or its contents. This report (in whole or in part) may not be reproduced or published without the express permission of Globlex Securities Co. Ltd.

Derivative Warrant Table 20 August 2012

DW	Type of Option	DW Price	Stock Price	Price by Black Scholes Model	Status	Time to maturity			Gearing Ratio(x)	Premium	Exercise Price	Exercise Ratio	Expire Date	Last Trading Day	DW Issued(mn)	Implied Volatility	Cumulative Volume/ Outstanding Units
						y.	m.	d.									
BJC06CA	Call	0.67	42.50	0.48	Out of the Money	0	3	18	4.23	8.94%	36.25000	1 : 15@36.25	7 Dec 12	29 Nov 12	20.0	72.26%	1.20%
BJC06PA	Put	0.54	42.50	0.24	Out of the Money	0	3	18	5.25	14.94%	44.25000	1 : 15@44.69	7 Dec 12	29 Nov 12	20.0	83.29%	0.86%
BJC13CA	Call	1.52	42.50	1.51	Out of the Money	0	1	8	2.83	0.57%	27.70000	1 : 9.89511@27.7	27 Sep 12	20 Sep 12	30.0	0.00%	5.83%
BLA01CB	Call	0.17	46.00	0.09	Out of the Money	0	0	20	13.62	4.49%	44.69000	1 : 19.86492@44	8 Sep 12	3 Sep 12	44.4	64.14%	13.56%
BLA01PA	Put	0.69	46.00	0.39	Out of the Money	0	0	20	6.67	6.30%	50.00000	1 : 10@50	8 Sep 12	3 Sep 12	20.0	109.55%	1.23%
BLA08CB	Call	0.62	46.00	0.26	Out of the Money	0	2	22	6.18	11.83%	44.00000	1 : 12@50	10 Nov 12	5 Nov 12	20.0	72.92%	0.60%
BLA13CC	Call	0.60	46.00	0.23	Out of the Money	0	1	24	7.72	10.11%	44.69000	1 : 9.93246@44.69	13 Oct 12	8 Oct 12	27.1	75.21%	10.93%
BLA13PB	Put	0.98	46.00	0.43	Out of the Money	0	4	9	4.69	12.61%	50.00000	1 : 10@34	28 Dec 12	21 Dec 12	23.9	-	-
BTS01CA	Call	0.44	5.30	0.32	Out of the Money	0	3	25	3.85	8.58%	4.38000	1 : 3.125@4.38	14 Dec 12	6 Dec 12	60.0	75.90%	2.05%
CPAL01CC	Call	0.26	33.75	0.12	Out of the Money	0	2	11	8.65	12.30%	34.00000	1 : 15@32	30 Oct 12	22 Oct 12	60.0	66.79%	79.31%
CPAL01PC	Put	1.13	33.75	1.00	Out of the Money	0	2	3	2.99	3.11%	44.00000	1 : 10@44	22 Oct 12	6 Jun 12	20.0	80.94%	14.59%
CPAL06CA	Call	0.45	33.75	0.26	Out of the Money	0	5	20	5.00	14.81%	32.00000	1 : 15@60	7 Feb 13	31 Jan 13	20.0	62.21%	11.11%
CPAL06PA	Put	0.64	33.75	0.38	Out of the Money	0	5	13	3.52	12.89%	39.00000	1 : 15@39	31 Jan 13	9 Oct 12	20.0	71.80%	0.70%
CPAL08CC	Call	0.02	33.75	0.00	Out of the Money	0	1	27	112.50	78.67%	60.00000	1 : 15@34	16 Oct 12	9 Oct 12	20.0	76.37%	0.96%
CPAL08PA	Put	3.14	33.75	-	Out of the Money	0	-2	#	0.90	4.24%	70.00000	1 : 12@70	6 Jun 12	9 Oct 12	20.0	-	0.00%
CPAL13CC	Call	0.57	33.75	0.25	Out of the Money	0	4	10	5.92	17.63%	34.00000	1 : 10@36	29 Dec 12	24 Dec 12	30.0	72.51%	7.00%
CPAL42CD	Call	0.83	33.75	0.55	Out of the Money	0	6	19	4.07	13.48%	30.00000	1 : 10@30	9 Mar 13	4 Mar 13	20.0	63.95%	0.36%
CPF01CC	Call	0.16	32.75	0.02	Out of the Money	0	2	11	13.65	17.25%	36.00000	1 : 15@33.5	30 Oct 12	22 Oct 12	250.0	62.40%	30.92%
CPF01PC	Put	1.55	32.75	1.49	Out of the Money	0	2	11	2.11	0.76%	48.00000	1 : 10@48	30 Oct 12	22 Oct 12	22.0	75.59%	0.73%
CPF08CE	Call	0.28	32.75	0.07	Out of the Money	0	1	10	14.84	9.03%	33.50000	1 : 7.88221@34	29 Sep 12	24 Sep 12	20.0	56.19%	60.37%
CPF08PB	Put	0.88	32.75	0.70	Out of the Money	0	1	10	4.72	3.84%	38.43000	1 : 7.88221@38.43	29 Sep 12	24 Sep 12	20.0	-	-
CPF13CC	Call	0.52	32.75	0.16	Out of the Money	0	6	1	6.30	19.69%	34.00000	1 : 10@40	19 Feb 13	12 Feb 13	50.0	58.45%	5.30%
CPF13PB	Put	0.46	32.75	0.13	Out of the Money	0	1	28	7.23	11.55%	33.50000	1 : 9.85319@33.5	17 Oct 12	10 Oct 12	30.0	80.25%	0.40%
CPF16CA	Call	0.48	32.75	0.01	Out of the Money	0	3	13	17.06	28.00%	40.00000	1 : 4@46	1 Dec 12	26 Nov 12	20.0	60.37%	2.50%
CPF42CC	Call	0.54	32.75	0.28	Out of the Money	0	4	3	6.06	11.15%	31.00000	1 : 10@31	22 Dec 12	17 Dec 12	20.0	57.80%	12.36%
CPF42PA	Put	1.40	32.75	1.26	Out of the Money	0	4	3	2.34	2.29%	46.00000	1 : 10@45	22 Dec 12	17 Dec 12	20.0	-	-
CPN08CB	Call	-	49.25	0.34	-	0	5	4	-	-	45.00000	1 : 15@45	22 Jan 13	15 Jan 13	19.7	65.88%	0.05%
CPN42CC	Call	0.70	49.25	0.27	Out of the Money	0	6	26	3.52	19.80%	45.00000	1 : 20@24	16 Mar 13	11 Mar 13	20.0	82.60%	6.39%
DCC13CA	Call	0.09	50.25	0.00	Out of the Money	0	0	23	58.05	16.57%	57.71000	1 : 9.61816@57.71	11 Sep 12	4 Sep 12	21.8	68.56%	0.43%
DELT13CB	Call	0.50	24.00	0.14	Out of the Money	0	1	24	9.60	10.42%	24.00000	1 : 5@87.52	13 Oct 12	8 Oct 12	24.4	67.20%	23.20%

The opinions and information presented in this report are those of the Globlex Securities Co. Ltd. Research Department. No representation or warranty in any form regarding the accuracy, completeness, correctness or fairness of opinions and information of this report is offered by Globlex Securities Co. Ltd. Globlex Securities Co. Ltd. accepts no liability whatsoever for any loss arising from the use of this report or its contents. This report (in whole or in part) may not be reproduced or published without the express permission of Globlex Securities Co. Ltd.

Derivative Warrant Table 20 August 2012

DW	Type of Option	DW Price	Stock Price	Price by Black Scholes Model	Status	Time to maturity y. m. d.			Gearing Ratio(x)	Premium	Exercise Price	Exercise Ratio	Expire Date	Last Trading Day	DW Issued(mn)	Implied Volatility	Cumulative Volume/ Outstanding Units
DTAC01CC	Call	1.00	81.75	0.77	Out of the Money	0	3	25	4.20	7.06%	68.07000	1 : 19.44769@68.07	14 Dec 12	6 Dec 12	60.0	63.22%	51.63%
DTAC01PC	Put	1.64	81.75	0.79	Out of the Money	0	3	25	5.13	12.45%	87.52000	1 : 9.72384@85.57	14 Dec 12	6 Dec 12	24.0	70.45%	3.83%
DTAC06CA	Call	0.91	81.75	0.68	Out of the Money	0	3	18	4.62	7.29%	70.01000	1 : 19.44769@70.01	7 Dec 12	29 Nov 12	20.0	60.21%	3.80%
DTAC06PA	Put	0.75	81.75	0.32	Out of the Money	0	3	18	5.60	13.17%	85.57000	1 : 19.44769@65.03	7 Dec 12	29 Nov 12	20.0	71.19%	0.00%
DTAC08CD	Call	1.24	81.75	0.89	Out of the Money	0	3	9	4.52	7.76%	70.01000	1 : 14.58602@70.01	27 Nov 12	20 Nov 12	17.7	66.17%	0.05%
DTAC13CC	Call	0.98	81.75	0.90	Out of the Money	0	1	28	4.36	2.48%	65.03000	1 : 19.12777@68.07	17 Oct 12	10 Oct 12	30.0	63.93%	5.70%
DTAC13PC	Put	0.70	81.75	0.20	Out of the Money	0	7	6	6.01	21.50%	77.79000	1 : 19.44769@77.79	26 Mar 13	19 Mar 13	27.8	65.90%	0.00%
DTAC42CC	Call	0.90	81.75	0.67	Out of the Money	0	6	26	3.74	10.03%	68.07000	1 : 24.30724@9.2	16 Mar 13	11 Mar 13	20.0	59.34%	0.33%
EGCO01CA	Call	0.82	117.00	0.58	Out of the Money	0	5	5	4.76	10.77%	105.00000	1 : 30@105	23 Jan 13	22 Jan 13	28.5	64.14%	15.63%
ESSO01CC	Call	0.62	11.20	0.44	Out of the Money	0	5	5	3.61	9.82%	9.20000	1 : 5@12.84	23 Jan 13	22 Jan 13	70.0	74.02%	68.01%
ESSO01PC	Put	0.93	11.20	0.54	Out of the Money	0	5	5	3.01	12.68%	13.50000	1 : 4@13.5	23 Jan 13	22 Jan 13	26.0	81.01%	9.08%
ESSO03CB	Call	0.14	11.20	0.01	Out of the Money	0	3	26	8.03	27.09%	12.84000	1 : 9.9569@13.24	15 Dec 12	7 Dec 12	60.0	73.68%	1.60%
ESSO13CC	Call	0.19	11.20	0.01	Out of the Money	0	2	11	14.80	22.29%	12.94000	1 : 3.98279@12.94	30 Oct 12	22 Oct 12	28.4	72.89%	14.99%
ESSO18CB	Call	0.04	11.20	0.00	Out of the Money	0	1	2	35.15	21.06%	13.24000	1 : 7.96552@14.94	20 Sep 12	13 Sep 12	20.0	72.67%	16.45%
ESSO42CC	Call	0.86	11.20	0.77	Out of the Money	0	5	29	2.60	5.36%	7.50000	1 : 5@7.5	16 Feb 13	11 Feb 16	30.0	68.84%	13.24%
ESSO42PA	Put	0.78	11.20	0.75	Out of the Money	0	0	13	2.88	1.28%	14.94000	1 : 4.97834@2.68	1 Sep 12	27 Aug 12	30.0	114.98%	3.97%
GLOW01CA	Call	0.68	61.25	0.27	Out of the Money	0	3	25	4.50	15.27%	57.00000	1 : 20@57	14 Dec 12	6 Dec 12	35.1	83.32%	5.77%
HEMR01CA	Call	0.68	2.94	0.31	Out of the Money	0	5	5	4.32	14.29%	2.68000	1 : 1@12	23 Jan 13	16 Jan 13	37.3	72.89%	0.96%
HEMR13CA	Call	0.55	2.94	0.20	Out of the Money	0	4	6	5.35	13.95%	2.80000	1 : 1@2.8	25 Dec 12	18 Dec 12	30.0	69.73%	0.62%
HMPR01CB	Call	0.30	12.00	0.09	Out of the Money	0	2	11	8.00	12.50%	12.00000	1 : 5@10.88	30 Oct 12	22 Oct 12	40.0	75.16%	29.25%
HMPR01PA	Put	0.90	12.00	0.72	Out of the Money	0	2	11	3.33	5.00%	15.00000	1 : 4@15	30 Oct 12	22 Oct 12	22.0	74.44%	0.00%
HMPR13CC	Call	0.53	12.00	0.31	Out of the Money	0	2	1	5.73	8.13%	10.88000	1 : 3.9546@52	20 Oct 12	19 Oct 12	30.0	77.95%	1.21%
HMPR13PA	Put	0.16	12.00	0.00	Out of the Money	0	0	23	18.97	12.19%	11.17000	1 : 3.9546@11.17	11 Sep 12	4 Sep 12	30.0	88.25%	0.13%
INTU01CA	Call	0.93	65.75	0.73	Out of the Money	0	5	5	3.53	7.38%	52.00000	1 : 20@55	23 Jan 13	16 Jan 13	60.0	62.56%	41.66%
INTU01PA	Put	1.04	65.75	0.14	Out of the Money	0	5	5	6.32	16.96%	65.00000	1 : 10@65	23 Jan 13	16 Jan 13	30.0	66.12%	1.82%
INTU06CA	Call	-	65.75	0.81	-	0	7	15	-	-	55.00000	1 : 15@55	4 Apr 13	28 Mar 13	20.0	-	-
INTU06PA	Put	-	65.75	0.17	-	0	7	15	-	-	67.00000	1 : 15@67	4 Apr 13	28 Mar 13	20.0	-	-
INTU13CA	Call	0.87	65.75	0.58	Out of the Money	0	4	6	3.78	10.11%	55.00000	1 : 20@70	25 Dec 12	18 Dec 12	29.8	79.77%	1.77%
INTU42CA	Call	1.09	65.75	0.84	Out of the Money	0	6	19	3.02	9.20%	50.00000	1 : 20@50	9 Mar 13	4 Mar 12	20.0	71.19%	2.02%
INTU42PA	Put	0.70	65.75	0.21	Out of the Money	0	6	19	4.70	14.83%	70.00000	1 : 20@4.3	9 Mar 13	4 Mar 12	20.0	63.56%	0.02%

The opinions and information presented in this report are those of the Globlex Securities Co. Ltd. Research Department. No representation or warranty in any form regarding the accuracy, completeness, correctness or fairness of opinions and information of this report is offered by Globlex Securities Co. Ltd. Globlex Securities Co. Ltd. accepts no liability whatsoever for any loss arising from the use of this report or its contents. This report (in whole or in part) may not be reproduced or published without the express permission of Globlex Securities Co. Ltd.

Derivative Warrant Table 20 August 2012

DW	Type of Option	DW Price	Stock Price	Price by Black Scholes Model	Status	Time to maturity y. m. d.			Gearing Ratio(x)	Premium	Exercise Price	Exercise Ratio	Expire Date	Last Trading Day	DW Issued(mn)	Implied Volatility	Cumulative Volume/ Outstanding Units
IRPC01CC	Call	0.68	3.86	0.50	Out of the Money	0	5	5	3.78	9.33%	3.20000	1 : 1.5@3.2	23 Jan 13	22 Jan 13	70.0	67.98%	9.52%
IRPC01PB	Put	1.01	3.86	0.49	Out of the Money	0	5	5	3.82	14.77%	4.30000	1 : 1@3.65	23 Jan 13	22 Jan 13	30.0	77.58%	0.38%
IRPC13CC	Call	0.02	3.86	0.05	In the Money	0	0	3	97.32	-1.30%	3.77000	1 : 1.98306@3.77	22 Aug 12	15 Aug 12	27.6	56.68%	4.31%
IRPC13CD	Call	0.80	3.86	0.46	Out of the Money	0	7	3	4.83	15.28%	3.65000	1 : 1@4.72	23 Mar 13	18 Mar 13	50.0	57.87%	1.13%
IRPC13PB	Put	0.50	3.86	0.19	Out of the Money	0	7	3	3.86	19.69%	4.10000	1 : 2@4.1	23 Mar 13	18 Mar 13	30.0	75.42%	0.46%
IRPC18CB	Call	0.02	3.86	0.00	Out of the Money	0	0	30	96.50	23.32%	4.72000	1 : 2@26	18 Sep 12	11 Sep 12	20.0	59.12%	3.40%
IVL01CE	Call	0.08	31.25	0.00	Out of the Money	0	0	20	26.42	17.35%	35.49000	1 : 14.78415@35.49	8 Sep 12	3 Sep 12	300.0	103.92%	45.31%
IVL01CF	Call	0.64	31.25	0.42	Out of the Money	0	5	5	3.26	13.92%	26.00000	1 : 15@25	23 Jan 13	22 Jan 13	160.0	91.16%	23.98%
IVL01PE	Put	1.62	31.25	1.62	In the Money	0	0	20	1.96	-0.29%	47.31000	1 : 9.85707@47.31	8 Sep 12	3 Sep 12	20.0	0.00%	9.90%
IVL06CB	Call	1.02	31.25	0.76	Out of the Money	0	7	15	3.06	12.64%	25.00000	1 : 10@32.53	4 Apr 13	28 Mar 13	20.0	74.02%	0.05%
IVL06PB	Put	0.61	31.25	0.23	Out of the Money	0	7	15	5.12	23.52%	30.00000	1 : 10@30	4 Apr 13	28 Mar 13	20.0	70.67%	0.42%
IVL08CD	Call	0.23	31.25	0.08	Out of the Money	0	1	24	9.19	14.98%	32.53000	1 : 14.78571@39.43	13 Oct 12	8 Oct 12	20.4	90.75%	43.47%
IVL08PB	Put	0.91	31.25	0.56	Out of the Money	0	1	24	4.35	9.40%	35.49000	1 : 7.88571@35.49	13 Oct 12	8 Oct 12	20.5	-	-
IVL13CE	Call	0.08	31.25	0.01	Out of the Money	0	2	6	19.81	31.22%	39.43000	1 : 19.71609@44.36	25 Oct 12	17 Oct 12	249.2	75.86%	45.84%
IVL13CF	Call	0.85	31.25	0.45	Out of the Money	0	6	1	3.68	20.00%	29.00000	1 : 10@29	19 Feb 13	12 Feb 13	70.0	88.39%	2.68%
IVL13PC	Put	0.70	31.25	0.65	Out of the Money	0	2	6	2.26	2.21%	44.36000	1 : 19.71609@33.51	25 Oct 12	17 Oct 12	28.9	75.70%	2.50%
IVL18CD	Call	0.16	31.25	0.09	Out of the Money	0	1	9	7.81	8.80%	30.00000	1 : 25@30	28 Sep 12	21 Sep 12	20.0	89.43%	4.98%
IVL18PA	Put	0.21	31.25	0.11	Out of the Money	0	1	9	6.04	9.33%	33.51000	1 : 24.64286@40	28 Sep 12	21 Sep 12	20.0	94.91%	0.48%
IVL42CD	Call	1.12	31.25	0.82	Out of the Money	0	6	19	2.79	12.64%	24.00000	1 : 10@24	9 Mar 13	4 Mar 13	20.0	88.25%	8.97%
IVL42PB	Put	1.24	31.25	0.88	Out of the Money	0	6	19	2.52	11.68%	40.00000	1 : 10@180	9 Mar 13	4 Mar 13	20.0	71.91%	0.01%
KBAN01CC	Call	1.04	171.00	0.75	Out of the Money	0	5	5	4.11	8.54%	144.00000	1 : 40@144	23 Jan 13	22 Jan 13	60.0	68.26%	23.00%
KBAN01PC	Put	1.06	171.00	0.39	Out of the Money	0	5	5	5.38	13.33%	180.00000	1 : 30@171	23 Jan 13	22 Jan 12	60.0	59.64%	1.20%
KBAN06CA	Call	1.31	171.00	1.06	Out of the Money	0	3	18	4.35	5.44%	141.00000	1 : 30@141	7 Dec 12	29 Nov 12	20.0	64.46%	0.13%
KBAN06PA	Put	0.74	171.00	0.19	Out of the Money	0	3	18	7.70	12.98%	171.00000	1 : 30@170	7 Dec 12	29 Nov 12	20.0	61.37%	2.00%
KBAN08CC	Call	1.18	171.00	0.92	Out of the Money	0	3	6	4.83	5.50%	145.00000	1 : 30@145	24 Nov 12	19 Nov 12	20.0	59.64%	0.15%
KBAN08PA	Put	0.73	171.00	0.17	Out of the Money	0	3	6	7.81	13.39%	170.00000	1 : 30@155	24 Nov 12	19 Nov 12	17.6	65.94%	0.51%
KBAN13CF	Call	0.88	171.00	0.53	Out of the Money	0	6	1	4.86	11.23%	155.00000	1 : 40@155	19 Feb 13	12 Feb 13	43.2	56.93%	3.24%
KBAN13PC	Put	0.74	171.00	0.06	Out of the Money	0	4	9	9.24	20.18%	155.00000	1 : 25@120	28 Dec 12	21 Dec 12	23.0	-	-
KBAN18CA	Call	0.59	171.00	0.55	Out of the Money	0	0	30	5.87	1.29%	144.09000	1 : 49.34641@144.09	18 Sep 12	11 Sep 12	20.0	71.80%	1.54%
KBAN42CD	Call	1.47	171.00	1.31	Out of the Money	0	4	3	2.91	4.56%	120.00000	1 : 40@31.77	22 Dec 12	17 Dec 12	20.0	74.66%	0.00%

The opinions and information presented in this report are those of the Globlex Securities Co. Ltd. Research Department. No representation or warranty in any form regarding the accuracy, completeness, correctness or fairness of opinions and information of this report is offered by Globlex Securities Co. Ltd. Globlex Securities Co. Ltd. accepts no liability whatsoever for any loss arising from the use of this report or its contents. This report (in whole or in part) may not be reproduced or published without the express permission of Globlex Securities Co. Ltd.

Derivative Warrant Table 20 August 2012

DW	Type of Option	DW Price	Stock Price	Price by Black Scholes Model	Status	Time to maturity			Gearing Ratio(x)	Premium	Exercise Price	Exercise Ratio	Expire Date	Last Trading Day	DW Issued(mn)	Implied Volatility	Cumulative Volume/ Outstanding Units
						y.	m.	d.									
KBAN42PA	Put	0.57	171.00	0.14	Out of the Money	0	4	3	7.50	13.92%	170.00000	1 : 40@170	22 Dec 12	17 Dec 12	20.0	58.64%	0.86%
KK13CB	Call	1.97	40.00	1.76	Out of the Money	0	2	11	4.22	3.13%	31.77000	1 : 4.81325@18.2	30 Oct 12	22 Oct 12	26.9	76.26%	0.29%
KTB01CD	Call	0.92	17.00	0.72	Out of the Money	0	5	5	3.70	8.24%	13.80000	1 : 5@13.8	23 Jan 13	22 Jan 13	70.0	60.18%	27.92%
KTB01PC	Put	0.92	17.00	0.45	Out of the Money	0	5	5	4.62	14.59%	18.20000	1 : 4@15.8	23 Jan 13	22 Jan 13	30.0	73.62%	29.33%
KTB13CD	Call	0.39	17.00	0.19	Out of the Money	0	2	1	9.03	10.42%	16.89000	1 : 4.82486@16.89	20 Oct 12	15 Oct 12	30.0	61.81%	3.67%
KTB13PB	Put	0.50	17.00	0.16	Out of the Money	0	7	3	6.80	21.76%	15.80000	1 : 5@18	23 Mar 13	18 Mar 13	30.0	65.73%	3.14%
KTB42CC	Call	1.10	17.00	1.00	Out of the Money	0	4	3	3.09	4.12%	12.20000	1 : 5@12.2	22 Dec 12	17 Dec 12	20.0	47.89%	4.58%
KTB42PA	Put	0.62	17.00	0.32	Out of the Money	0	4	3	5.48	12.35%	18.00000	1 : 5@8.8	22 Dec 12	17 Dec 12	20.0	71.80%	6.83%
LH01CC	Call	0.45	7.95	0.35	Out of the Money	0	2	11	4.42	5.66%	6.60000	1 : 4@6.6	30 Oct 12	22 Oct 12	55.0	71.87%	17.73%
LH01PC	Put	0.40	7.95	0.20	Out of the Money	0	2	11	4.97	9.43%	8.80000	1 : 4@11.3	30 Oct 12	22 Oct 12	36.0	84.13%	0.98%
LH18CB	Call	0.40	7.95	0.26	Out of the Money	0	3	26	4.97	8.18%	7.00000	1 : 4@7	15 Dec 12	7 Dec 12	20.0	-	-
MINT01CA	Call	0.95	15.10	0.79	Out of the Money	0	3	25	3.18	6.29%	11.30000	1 : 5@11	14 Dec 12	6 Dec 12	44.0	83.84%	6.68%
MINT08CB	Call	-	15.10	0.31	-	0	5	4	-	-	14.00000	1 : 5@14	22 Jan 13	15 Jan 13	19.9	-	-
MINT42CC	Call	1.14	15.10	0.87	Out of the Money	0	6	19	2.65	10.60%	11.00000	1 : 5@17	9 Mar 13	4 Mar 13	20.0	83.99%	0.32%
PS01CB	Call	0.98	18.00	0.82	Out of the Money	0	2	11	3.67	5.00%	14.00000	1 : 5@14	30 Oct 12	22 Oct 12	24.0	74.44%	62.19%
PS01PA	Put	0.48	18.00	0.05	Out of the Money	0	2	11	9.38	16.22%	17.00000	1 : 4@13.63	30 Oct 12	22 Oct 12	20.0	81.71%	8.95%
PS08CC	Call	-	18.00	0.42	-	0	5	1	-	-	16.00000	1 : 6@16	19 Jan 13	14 Jan 13	20.0	-	-
PS13PA	Put	0.13	18.00	0.00	Out of the Money	0	1	8	35.55	27.09%	13.63000	1 : 3.89469@365	27 Sep 12	20 Sep 12	29.5	-	-
PTT01CC	Call	0.57	339.00	0.31	Out of the Money	0	2	11	7.43	7.85%	320.00000	1 : 80@320	30 Oct 12	22 Oct 12	55.0	64.17%	61.90%
PTT01PC	Put	1.05	339.00	0.54	Out of the Money	0	2	11	6.46	7.82%	365.00000	1 : 50@290	30 Oct 12	22 Oct 12	30.0	63.30%	36.90%
PTT03CA	Call	0.23	339.00	0.12	Out of the Money	0	3	26	7.37	10.32%	328.00000	1 : 200@328	15 Dec 12	7 Dec 12	50.0	54.99%	3.16%
PTT06CC	Call	1.84	339.00	1.18	Out of the Money	0	7	15	3.68	12.68%	290.00000	1 : 50@335	4 Apr 13	28 Mar 13	20.0	62.94%	0.80%
PTT06PC	Put	1.44	339.00	0.50	Out of the Money	0	7	15	4.71	16.52%	355.00000	1 : 50@355	4 Apr 13	28 Mar 13	20.0	60.99%	0.30%
PTT08CD	Call	0.42	339.00	0.16	Out of the Money	0	0	27	13.45	6.25%	335.00000	1 : 60@300	15 Sep 12	10 Sep 12	20.0	-	-
PTT08PB	Put	0.81	339.00	0.55	Out of the Money	0	0	27	7.61	4.00%	370.00000	1 : 55@370	15 Sep 12	10 Sep 12	16.8	68.99%	1.22%
PTT13CG	Call	0.74	339.00	0.45	Out of the Money	0	4	10	4.58	10.32%	300.00000	1 : 100@300	29 Dec 12	24 Dec 12	30.0	-	-
PTT13PC	Put	0.65	339.00	0.20	Out of the Money	0	7	3	5.22	17.40%	345.00000	1 : 100@345	23 Mar 13	18 Mar 13	30.0	64.06%	0.57%
PTT18CC	Call	0.65	339.00	0.45	Out of the Money	0	3	25	5.22	7.67%	300.00000	1 : 100@284.44	14 Dec 12	6 Dec 12	20.0	58.09%	0.27%
PTT18PB	Put	0.24	339.00	0.01	Out of the Money	0	3	25	14.13	21.53%	290.00000	1 : 100@290	14 Dec 12	6 Dec 12	20.0	64.17%	0.30%
PTT42CD	Call	1.23	339.00	1.12	Out of the Money	0	0	13	5.62	1.70%	284.44000	1 : 49.04365@152.14	1 Sep 12	27 Aug 12	16.0	104.49%	2.13%

The opinions and information presented in this report are those of the Globlex Securities Co. Ltd. Research Department. No representation or warranty in any form regarding the accuracy, completeness, correctness or fairness of opinions and information of this report is offered by Globlex Securities Co. Ltd. Globlex Securities Co. Ltd. accepts no liability whatsoever for any loss arising from the use of this report or its contents. This report (in whole or in part) may not be reproduced or published without the express permission of Globlex Securities Co. Ltd.

Derivative Warrant Table 20 August 2012

DW	Type of Option	DW Price	Stock Price	Price by Black Scholes Model	Status	Time to maturity			Gearing Ratio(x)	Premium	Exercise Price	Exercise Ratio	Expire Date	Last Trading Day	DW Issued(mn)	Implied Volatility	Cumulative Volume/ Outstanding Units
						y.	m.	d.									
PTT42PA	Put	0.36	339.00	0.14	Out of the Money	0	0	13	19.20	3.94%	343.29000	1 : 49.04365@343.29	1 Sep 12	27 Aug 12	23.0	69.03%	12.32%
PTTE01CD	Call	0.60	152.00	0.25	Out of the Money	0	5	5	6.45	15.59%	152.14000	1 : 39.26188@157.05	23 Jan 13	22 Jan 13	60.0	60.56%	9.81%
PTTE01PD	Put	1.24	152.00	0.90	Out of the Money	0	5	5	3.12	7.39%	189.45000	1 : 39.26188@189.45	23 Jan 13	22 Jan 13	60.0	60.70%	0.63%
PTTE08CC	Call	0.03	152.00	0.01	Out of the Money	0	0	6	147.48	4.00%	157.05000	1 : 34.35526@186.5	25 Aug 12	20 Aug 12	20.3	51.22%	15.57%
PTTE08CD	Call	-	152.00	0.24	-	0	5	8	-	-	155.00000	1 : 35@155	26 Jan 13	21 Jan 13	20.0	-	-
PTTE08PA	Put	1.13	152.00	1.17	In the Money	0	0	6	4.57	-0.81%	186.50000	1 : 29.44737@161.96	25 Aug 12	20 Aug 12	19.5	-	-
PTTE08PB	Put	-	152.00	0.53	-	0	5	8	-	-	170.00000	1 : 35@170	26 Jan 13	21 Jan 13	19.6	-	-
PTTE13CF	Call	0.45	152.00	0.15	Out of the Money	0	7	3	6.88	21.08%	161.96000	1 : 49.06771@181.59	23 Mar 13	18 Mar 13	50.0	57.83%	0.52%
PTTE13PB	Put	0.75	152.00	0.35	Out of the Money	0	7	3	4.13	14.43%	166.87000	1 : 49.06771@166.87	23 Mar 13	18 Mar 13	30.0	63.30%	0.62%
PTTE18CA	Call	0.01	152.00	0.00	Out of the Money	0	1	1	309.71	19.79%	181.59000	1 : 49.07895@147.24	19 Sep 12	12 Sep 12	20.0	46.77%	3.44%
PTTE18PA	Put	0.26	152.00	0.24	Out of the Money	0	1	1	11.91	0.88%	163.43000	1 : 49.07895@163.43	19 Sep 12	12 Sep 12	20.0	30.31%	1.23%
PTTE42CD	Call	0.45	152.00	0.29	Out of the Money	0	0	13	17.21	2.68%	147.24000	1 : 19.63094@67	1 Sep 12	27 Aug 12	13.0	77.16%	1.85%
PTTE42PA	Put	1.47	152.00	1.50	In the Money	0	0	13	5.27	-0.48%	181.59000	1 : 19.63094@181.59	1 Sep 12	27 Aug 12	18.0	73.76%	0.07%
PTTG01CB	Call	0.15	64.25	0.04	Out of the Money	0	0	20	21.42	8.95%	67.00000	1 : 20@58	8 Sep 12	3 Sep 12	290.0	80.90%	30.82%
PTTG01PB	Put	1.59	64.25	1.56	Out of the Money	0	0	20	4.04	0.23%	80.00000	1 : 10@80	8 Sep 12	3 Sep 12	25.0	79.83%	40.89%
PTTG03CA	Call	0.34	64.25	0.21	Out of the Money	0	3	26	4.72	11.44%	58.00000	1 : 40@70	15 Dec 12	7 Dec 12	25.0	69.72%	1.15%
PTTG06CB	Call	0.93	64.25	0.54	Out of the Money	0	5	20	4.61	15.10%	60.00000	1 : 15@60	7 Feb 13	31 Jan 13	20.0	59.73%	0.05%
PTTG06PB	Put	0.92	64.25	0.53	Out of the Money	0	5	20	4.66	12.53%	70.00000	1 : 15@64	7 Feb 13	31 Jan 13	20.0	65.41%	0.17%
PTTG08CB	Call	0.40	64.25	0.12	Out of the Money	0	2	22	10.71	18.29%	70.00000	1 : 15@70	10 Nov 12	5 Nov 12	19.8	66.97%	2.77%
PTTG08PA	Put	0.91	64.25	0.32	Out of the Money	0	2	22	7.06	14.55%	64.00000	1 : 10@63	10 Nov 12	5 Nov 12	19.8	77.01%	0.67%
PTTG13CB	Call	0.84	64.25	0.63	Out of the Money	0	4	2	3.82	8.64%	53.00000	1 : 20@53	21 Dec 12	14 Dec 12	30.0	69.13%	9.50%
PTTG13PB	Put	0.46	64.25	0.17	Out of the Money	0	4	2	6.98	16.26%	63.00000	1 : 20@41.47	21 Dec 12	14 Dec 12	30.0	72.83%	0.92%
PTTG42CB	Call	0.96	64.25	0.64	Out of the Money	0	6	26	3.35	13.93%	54.00000	1 : 20@54	16 Mar 13	11 Mar 13	20.0	76.15%	14.10%
ROBI13CA	Call	1.88	60.50	1.94	In the Money	0	1	8	3.26	-0.77%	41.47000	1 : 9.87362@166	27 Sep 12	20 Sep 12	29.2	0.00%	0.02%
SCB01CC	Call	1.16	154.00	0.82	Out of the Money	0	5	5	4.43	8.31%	132.00000	1 : 30@132	23 Jan 13	22 Jan 13	60.0	68.46%	28.05%
SCB01PB	Put	1.05	154.00	0.41	Out of the Money	0	5	5	4.89	12.66%	166.00000	1 : 30@160	23 Jan 13	22 Jan 13	60.0	58.97%	5.27%
SCB06CD	Call	1.65	154.00	0.99	Out of the Money	0	5	20	3.73	12.50%	132.00000	1 : 25@132	7 Feb 13	31 Jan 13	20.0	73.25%	0.13%
SCB06PD	Put	1.09	154.00	0.34	Out of the Money	0	5	20	5.65	13.80%	160.00000	1 : 25@145	7 Feb 13	31 Jan 13	20.0	60.03%	0.32%
SCB08CD	Call	0.62	154.00	0.64	In the Money	0	0	6	8.28	-0.26%	135.00000	1 : 30@135	25 Aug 12	20 Aug 12	20.0	164.65%	18.95%
SCB08CE	Call	-	154.00	0.45	-	0	5	8	-	-	145.00000	1 : 30@160	26 Jan 13	21 Jan 13	18.6	-	-

The opinions and information presented in this report are those of the Globlex Securities Co. Ltd. Research Department. No representation or warranty in any form regarding the accuracy, completeness, correctness or fairness of opinions and information of this report is offered by Globlex Securities Co. Ltd. Globlex Securities Co. Ltd. accepts no liability whatsoever for any loss arising from the use of this report or its contents. This report (in whole or in part) may not be reproduced or published without the express permission of Globlex Securities Co. Ltd.

Derivative Warrant Table 20 August 2012

DW	Type of Option	DW Price	Stock Price	Price by Black Scholes Model	Status	Time to maturity y. m. d.	Gearing Ratio(x)	Premium	Exercise Price	Exercise Ratio	Expire Date	Last Trading Day	DW Issued(mn)	Implied Volatility	Cumulative Volume/ Outstanding Units
SCB08PB	Put	0.19	154.00	0.07	Out of the Money	0 0 6	32.42	2.44%	155.00000	1 : 25@155	25 Aug 12	20 Aug 12	20.0	48.53%	17.18%
SCB08PC	Put	-	154.00	0.34	-	0 5 8	-	-	160.00000	1 : 25@145	26 Jan 13	21 Jan 13	16.9	-	-
SCB13CC	Call	1.40	154.00	1.04	Out of the Money	0 4 10	4.40	7.14%	130.00000	1 : 25@130	29 Dec 12	24 Dec 12	22.4	61.67%	0.98%
SCB13PC	Put	0.92	154.00	0.11	Out of the Money	0 7 7	6.70	20.78%	145.00000	1 : 25@309.4	27 Mar 13	20 Mar 13	21.0	63.35%	0.52%
SCB42CD	Call	0.86	154.00	0.43	Out of the Money	0 6 26	4.48	14.55%	142.00000	1 : 40@142	16 Mar 13	11 Mar 13	20.0	62.56%	1.53%
SCC01CC	Call	0.48	338.00	0.38	Out of the Money	0 0 20	9.10	2.52%	309.40000	1 : 77.33952@345.14	8 Sep 12	3 Sep 12	24.0	80.93%	20.15%
SCC01PC	Put	0.90	338.00	0.69	Out of the Money	0 0 20	7.77	2.74%	372.25000	1 : 48.33253@372.25	8 Sep 12	3 Sep 12	22.0	79.05%	9.61%
SCC08CC	Call	0.43	338.00	0.11	Out of the Money	0 1 10	15.94	8.39%	345.14000	1 : 49.30556@310.62	29 Sep 12	24 Sep 12	20.0	57.22%	6.08%
SCC08PB	Put	0.91	338.00	0.22	Out of the Money	0 1 10	7.53	11.16%	345.14000	1 : 49.30556@345.14	29 Sep 12	24 Sep 12	20.0	-	-
SCC13CE	Call	0.75	338.00	0.40	Out of the Money	0 7 6	4.57	13.78%	310.62000	1 : 98.61933@338.41	26 Mar 13	19 Mar 13	50.0	58.99%	0.01%
SCC13PC	Put	0.71	338.00	0.13	Out of the Money	0 7 6	4.83	21.52%	335.28000	1 : 98.61933@335.28	26 Mar 13	19 Mar 13	30.0	74.97%	1.26%
SCC18CA	Call	0.19	338.00	0.08	Out of the Money	0 1 3	18.40	5.56%	338.41000	1 : 96.67756@16	21 Sep 12	14 Sep 12	20.0	45.83%	1.29%
SPAL01CB	Call	1.16	18.50	0.97	Out of the Money	0 3 25	3.19	5.95%	13.80000	1 : 5@13.8	14 Dec 12	6 Dec 12	36.0	72.25%	8.62%
SPAL08CB	Call	-	18.50	0.72	-	0 5 4	-	-	16.00000	1 : 4@0.82	22 Jan 13	15 Jan 13	20.0	-	-
SPAL13CA	Call	1.31	18.50	1.34	In the Money	0 1 1	3.59	-0.51%	13.26000	1 : 3.9285@13.26	19 Sep 12	12 Sep 12	29.2	-	-
SSI13CB	Call	0.04	0.60	0.00	Out of the Money	0 2 11	30.00	40.00%	0.82000	1 : 0.5@19.02	30 Oct 12	22 Oct 12	50.0	79.08%	0.70%
SSI18CA	Call	0.06	0.60	0.00	Out of the Money	0 1 17	20.00	21.67%	0.70000	1 : 0.5@0.7	6 Oct 12	1 Oct 12	20.0	73.68%	1.00%
STA01CC	Call	0.03	14.80	0.00	Out of the Money	0 0 20	63.23	30.10%	19.02000	1 : 7.80275@23.41	8 Sep 12	3 Sep 12	25.0	85.71%	33.80%
STA01CD	Call	-	14.80	0.38	-	0 5 5	-	-	13.40000	1 : 5@13.4	23 Jan 13	16 Jan 13	33.2	72.38%	29.72%
STA01PB	Put	1.86	14.80	1.76	Out of the Money	0 0 20	1.63	3.11%	23.41000	1 : 4.87686@14.9	8 Sep 12	3 Sep 12	20.0	166.45%	20.06%
STA01PC	Put	1.24	14.80	0.77	Out of the Money	0 5 5	2.98	11.89%	18.00000	1 : 4@18	23 Jan 13	16 Jan 13	12.0	82.64%	14.41%
STA03CA	Call	0.24	14.80	0.09	Out of the Money	0 3 26	6.17	16.89%	14.90000	1 : 10@19.5	15 Dec 12	7 Dec 12	25.0	75.41%	0.62%
STA08CB	Call	0.52	14.80	0.20	Out of the Money	0 5 11	4.74	19.73%	14.60000	1 : 6@14.6	29 Jan 13	22 Jan 13	20.0	-	-
STA08PA	Put	1.32	14.80	0.89	Out of the Money	0 5 11	2.24	12.84%	19.50000	1 : 5@17	29 Jan 13	22 Jan 13	16.7	88.38%	0.00%
STA13CD	Call	0.50	14.80	0.17	Out of the Money	0 4 10	5.92	18.24%	15.00000	1 : 5@15	29 Dec 12	24 Dec 12	30.0	72.32%	3.20%
STA13CE	Call	0.66	14.80	0.15	Out of the Money	0 10 17	4.48	37.16%	17.00000	1 : 5@20	6 Jul 13	28 Jun 13	28.1	72.55%	2.51%
STA13PA	Put	1.47	14.80	1.34	Out of the Money	0 1 24	2.06	3.44%	21.46000	1 : 4.87686@21.46	13 Oct 12	8 Oct 12	26.1	97.76%	3.94%
STA13PB	Put	-	14.80	0.95	-	0 10 17	-	-	20.00000	1 : 5@12	6 Jul 13	28 Jun 13	18.3	-	-
STA18CA	Call	0.02	14.80	0.00	Out of the Money	0 1 2	75.87	43.68%	21.07000	1 : 9.75369@21.07	20 Sep 12	13 Sep 12	20.0	76.74%	2.40%
STA42CD	Call	0.89	14.80	0.62	Out of the Money	0 5 29	3.33	11.15%	12.00000	1 : 5@24.44	16 Feb 13	11 Feb 13	20.0	67.02%	18.80%

The opinions and information presented in this report are those of the Globlex Securities Co. Ltd. Research Department. No representation or warranty in any form regarding the accuracy, completeness, correctness or fairness of opinions and information of this report is offered by Globlex Securities Co. Ltd. Globlex Securities Co. Ltd. accepts no liability whatsoever for any loss arising from the use of this report or its contents. This report (in whole or in part) may not be reproduced or published without the express permission of Globlex Securities Co. Ltd.

Derivative Warrant Table 20 August 2012

DW	Type of Option	DW Price	Stock Price	Price by Black Scholes Model	Status	Time to maturity			Gearing Ratio(x)	Premium	Exercise Price	Exercise Ratio	Expire Date	Last Trading Day	DW Issued(mn)	Implied Volatility	Cumulative Volume/ Outstanding Units
						y.	m.	d.									
STA42PA	Put	1.77	14.80	1.76	Out of the Money	0	0	13	1.71	0.15%	23.41000	1 : 4.87686@23.41	1 Sep 12	27 Aug 12	60.0	172.56%	4.96%
TCAP01CB	Call	0.98	34.00	0.98	Out of the Money	0	0	20	3.55	0.07%	24.44000	1 : 9.77804@29	8 Sep 12	3 Sep 12	75.0	0.00%	103.13%
TCAP01PA	Put	0.48	34.00	0.39	Out of the Money	0	0	20	7.08	2.35%	38.00000	1 : 10@38	8 Sep 12	3 Sep 12	20.0	85.19%	63.77%
TCAP08CC	Call	0.79	34.00	0.65	Out of the Money	0	1	27	5.38	3.88%	29.00000	1 : 8@24.44	16 Oct 12	9 Oct 12	20.0	61.60%	39.30%
TCAP08PA	Put	0.77	34.00	0.04	Out of the Money	0	1	27	11.04	14.94%	32.00000	1 : 4@32	16 Oct 12	9 Oct 12	14.5	78.97%	4.24%
TCAP13CD	Call	1.86	34.00	1.97	In the Money	0	0	23	3.74	-1.37%	24.44000	1 : 4.88878@24	11 Sep 12	4 Sep 12	20.7	0.00%	3.29%
TCAP42CC	Call	0.59	34.00	0.43	Out of the Money	0	6	26	2.88	11.18%	26.00000	1 : 20@26	16 Mar 13	11 Mar 13	20.0	78.04%	22.64%
THAI01CD	Call	0.15	20.20	0.00	Out of the Money	0	2	11	13.47	26.24%	24.00000	1 : 10@22	30 Oct 12	22 Oct 12	35.0	80.72%	1.09%
THAI01PC	Put	1.17	20.20	1.07	Out of the Money	0	2	11	2.16	2.77%	29.00000	1 : 8@29	30 Oct 12	22 Oct 12	20.0	76.23%	0.40%
THAI03CA	Call	0.21	20.20	0.02	Out of the Money	0	6	25	4.81	29.70%	22.00000	1 : 20@21	15 Mar 13	8 Mar 13	25.0	79.56%	0.80%
THAI08CB	Call	-	20.20	0.52	-	0	5	11	-	-	18.00000	1 : 5@18	29 Jan 13	22 Jan 13	19.8	-	-
THAI08PA	Put	-	20.20	0.22	-	0	5	11	-	-	21.00000	1 : 5@22.5	29 Jan 13	22 Jan 13	20.0	-	-
THAI13CC	Call	0.44	20.20	0.13	Out of the Money	0	4	9	5.74	16.44%	20.00000	1 : 8@20	28 Dec 12	21 Dec 12	30.0	70.70%	1.34%
THAI13PA	Put	0.45	20.20	0.28	Out of the Money	0	0	23	5.61	6.44%	22.50000	1 : 8@17	11 Sep 12	4 Sep 12	30.0	-	-
THAI18CB	Call	0.12	20.20	0.00	Out of the Money	0	2	13	10.52	28.32%	24.00000	1 : 16@24	1 Nov 12	25 Oct 12	20.0	84.19%	1.61%
THAI42CC	Call	1.16	20.20	0.71	Out of the Money	0	5	29	3.48	12.87%	17.00000	1 : 5@33	16 Feb 13	11 Feb 13	20.0	74.96%	9.83%
THAI42PA	Put	1.01	20.20	0.95	Out of the Money	0	0	13	4.00	1.24%	25.00000	1 : 5@25	1 Sep 12	27 Aug 12	30.0	103.04%	0.03%
TISC01CB	Call	0.74	40.00	0.50	Out of the Money	0	3	25	3.60	10.25%	33.00000	1 : 15@1.62	14 Dec 12	6 Dec 12	35.0	83.39%	0.25%
TISC01PA	Put	0.67	40.00	0.21	Out of the Money	0	3	25	5.97	14.25%	41.00000	1 : 10@41	14 Dec 12	6 Dec 12	20.0	66.73%	1.32%
TMB01CA	Call	0.17	1.59	0.09	Out of the Money	0	0	20	19.05	7.14%	1.62000	1 : 0.49096@1.52	8 Sep 12	3 Sep 12	26.0	56.28%	11.14%
TMB01PA	Put	0.83	1.59	0.81	Out of the Money	0	0	20	3.83	0.31%	2.00000	1 : 0.5@2	8 Sep 12	3 Sep 12	35.0	112.96%	0.02%
TMB13CC	Call	0.27	1.59	0.17	Out of the Money	0	1	1	11.99	3.93%	1.52000	1 : 0.49096@1.71	19 Sep 12	12 Sep 12	30.0	51.71%	0.85%
TMB13PA	Put	0.23	1.59	0.04	Out of the Money	0	1	1	14.08	8.36%	1.57000	1 : 0.49096@1.57	19 Sep 12	12 Sep 12	29.8	79.69%	0.60%
TMB18CC	Call	0.05	1.59	0.00	Out of the Money	0	1	3	32.39	10.64%	1.71000	1 : 0.98193@72	21 Sep 12	14 Sep 12	20.0	55.26%	0.10%
TOP01CC	Call	0.86	67.25	0.74	Out of the Money	0	3	25	3.91	5.87%	54.00000	1 : 20@54	14 Dec 12	6 Dec 12	60.0	74.13%	26.49%
TOP01PC	Put	1.37	67.25	0.80	Out of the Money	0	3	25	4.91	13.31%	72.00000	1 : 10@65	14 Dec 12	6 Dec 12	32.0	72.43%	40.31%
TOP08CD	Call	0.41	67.25	0.13	Out of the Money	0	2	11	16.40	22.08%	78.00000	1 : 10@78	30 Oct 12	22 Oct 12	19.5	69.88%	5.68%
TOP08PA	Put	0.74	67.25	0.31	Out of the Money	0	2	11	9.09	14.35%	65.00000	1 : 10@60	30 Oct 12	22 Oct 12	19.5	75.22%	23.06%
TOP13CD	Call	0.29	67.25	0.13	Out of the Money	0	2	6	11.59	15.69%	72.00000	1 : 20@72	25 Oct 12	17 Oct 12	28.1	68.52%	1.85%
TOP13CE	Call	0.82	67.25	0.62	Out of the Money	0	7	7	4.10	13.61%	60.00000	1 : 20@65	27 Mar 13	20 Mar 13	50.0	-	-

The opinions and information presented in this report are those of the Globlex Securities Co. Ltd. Research Department. No representation or warranty in any form regarding the accuracy, completeness, correctness or fairness of opinions and information of this report is offered by Globlex Securities Co. Ltd. Globlex Securities Co. Ltd. accepts no liability whatsoever for any loss arising from the use of this report or its contents. This report (in whole or in part) may not be reproduced or published without the express permission of Globlex Securities Co. Ltd.

Derivative Warrant Table 20 August 2012

DW	Type of Option	DW Price	Stock Price	Price by Black Scholes Model	Status	Time to maturity y. m. d.	Gearing Ratio(x)	Premium	Exercise Price	Exercise Ratio	Expire Date	Last Trading Day	DW Issued(mn)	Implied Volatility	Cumulative Volume/ Outstanding Units
TOP13PC	Put	0.53	67.25	0.25	Out of the Money	0 7 7	6.34	22.08%	63.00000	1 : 20@63	27 Mar 13	20 Mar 13	30.0	64.39%	4.22%
TOP18CD	Call	0.31	67.25	0.24	Out of the Money	0 2 13	8.68	8.18%	65.00000	1 : 25@75	1 Nov 12	25 Oct 12	20.0	-	-
TOP42CD	Call	1.22	67.25	1.05	Out of the Money	0 6 19	2.76	7.66%	48.00000	1 : 20@48	9 Mar 13	4 Mar 13	20.0	73.82%	0.50%
TOP42PA	Put	0.82	67.25	0.56	Out of the Money	0 6 19	4.10	12.86%	75.00000	1 : 20@14.8	9 Mar 13	4 Mar 13	20.0	59.91%	14.03%
TIPI01CB	Call	0.20	11.60	0.02	Out of the Money	0 2 11	11.60	18.97%	12.80000	1 : 5@12.8	30 Oct 12	22 Oct 12	50.0	75.57%	14.34%
TIPI01PA	Put	0.89	11.60	0.77	Out of the Money	0 2 11	3.26	3.10%	14.80000	1 : 4@4.2	30 Oct 12	22 Oct 12	25.0	59.70%	0.40%
TRUE01CD	Call	1.41	4.18	1.22	Out of the Money	0 3 25	2.96	5.50%	3.00000	1 : 1@3	14 Dec 12	6 Dec 06	45.0	72.09%	52.03%
TRUE01PD	Put	0.74	4.18	0.18	Out of the Money	0 3 25	5.65	17.22%	4.20000	1 : 1@4	14 Dec 12	6 Dec 12	24.0	85.27%	3.60%
TRUE08CC	Call	1.11	4.18	1.00	Out of the Money	0 2 11	3.77	3.11%	3.20000	1 : 1@3.2	30 Oct 12	22 Oct 12	20.0	57.61%	6.54%
TRUE08PA	Put	0.56	4.18	0.07	Out of the Money	0 2 11	7.46	17.70%	4.00000	1 : 1@3.2	30 Oct 12	22 Oct 12	20.0	-	-
TRUE13CD	Call	1.11	4.18	0.74	Out of the Money	0 4 9	3.77	10.29%	3.50000	1 : 1@3.5	28 Dec 12	21 Dec 12	28.6	77.95%	3.26%
TRUE13PA	Put	0.06	4.18	0.00	Out of the Money	0 1 8	69.67	24.88%	3.20000	1 : 1@2.9	27 Sep 12	20 Sep 12	29.5	75.44%	0.07%
TRUE18CC	Call	0.52	4.18	0.50	Out of the Money	0 1 3	4.02	1.44%	3.20000	1 : 2@3.2	21 Sep 12	14 Sep 12	20.0	79.68%	10.08%
TRUE42CA	Call	0.77	4.18	0.66	Out of the Money	0 4 3	2.71	6.22%	2.90000	1 : 2@62	22 Dec 12	17 Dec 12	30.0	70.62%	2.90%
TRUE42PA	Put	0.51	4.18	0.18	Out of the Money	0 4 3	4.10	16.75%	4.50000	1 : 2@4.5	22 Dec 12	17 Dec 12	30.0	93.46%	2.45%
TUF01CB	Call	0.74	70.50	0.47	Out of the Money	0 3 25	4.76	8.94%	62.00000	1 : 20@69	14 Dec 12	6 Dec 12	35.0	71.70%	12.51%
TUF01PA	Put	1.37	70.50	0.46	Out of the Money	0 3 25	5.15	13.05%	75.00000	1 : 10@75	14 Dec 12	6 Dec 12	14.0	70.22%	0.59%
TUF08CD	Call	-	70.50	0.21	-	0 5 1	-	-	69.00000	1 : 20@0	19 Jan 13	14 Jan 13	20.0	-	-
TUF13CB	Call	0.51	70.50	0.04	Out of the Money	0 3 13	6.91	20.85%	75.00000	1 : 20@75	1 Dec 12	26 Nov 12	30.0	78.17%	0.73%

Note: Cumulative Volume and Implied Volatility were calculated from 10/08/2012
Exercise Ratio is no. of shares of common stock : DW

Warrant Table 20-24 Aug 2012

Warrant	Warrant Price	Stock Price	Black Scholes	Status	Time to maturity			Gearing Ratio(x)	Premium	Exercise Price	Exercise Ratio	Exercise Period	First Exercise	Expire Date	Warrant Issued(mn)	Outstanding Warrant(mn)
					y.	m.	d.									
AGE-W1	3.16	3.14	1.76	Out of the Money	1	5	26	1.40	-5.81%	0.71000	1 : 1.406@0.71	End of Jun,Dec	30 Jun 11	13 Feb 14	256.0	43.3
AIM-W1	0.01	0.09	0.00	Out of the Money	0	0	29	9.00	133.33%	0.20000	1 : 1@0.2	End of Mar,Jun,Sep,Dec	30 Dec 09	17 Sep 12	1399.7	1399.7
AIT-W1	36	54.75	38.32	In the Money	0	1	10	1.52	-4.11%	16.50000	1 : 1@16.5	End of Mar,Jun,Sep,Dec	28 Dec 07	29 Sep 12	6.0	0.3
AMC-W1	0.66	1.98	0.00	Out of the Money	1	6	17	3.00	84.85%	3.00000	1 : 1@3	End of Mar,Jun,Dec	-	7 Mar 14	40.0	40.0
AQUA-W2	0.21	0.38	0.00	Out of the Money	1	6	25	1.81	152.63%	0.75000	1 : 1@0.75	End of Jun, Dec	30 Dec 11	15 Mar 14	673.4	673.4
BLAND-W2	0.03	0.93	0.02	Out of the Money	0	8	12	31.00	107.53%	1.90000	1 : 1@1.9	End of Mar,Jun,Sep,Dec	30 Sep 08	2 May 13	6886.3	6883.7
BLAND-W3	0.26	0.93	0.32	Out of the Money	3	2	19	3.58	67.74%	1.30000	1 : 1@1.3	End of Mar,Jun,Sep,Dec	30 Sep 06	7 Nov 15	1994.2	1993.6
BROOK-W4	0.01	0.47	0.05	Out of the Money	3	11	20	47.00	125.53%	1.05000	1 : 1@1.05	End of Mar,Jun,Sep,Dec	30 Oct 09	8 Aug 16	374.4	374.4
BTS-W2	0.01	0.47	0.00	Out of the Money	1	2	23	7.52	845.21%	4.38000	1 : 0.16@4.38	End of Mar,Jun,Sep,Dec	30 Oct 09	11 Nov 13	5027.0	5027.0
BWG-W1	0.01	0.47	0.01	Out of the Money	1	10	24	47.00	157.45%	1.20000	1 : 1@1.2	End of Mar,Jun,Sep,Dec	30 Oct 09	13 Jul 14	160.0	85.7
CCP-W1	2.56	3.58	2.66	In the Money	2	1	10	1.40	-0.56%	1.00000	1 : 1@1	End of Mar,Jun,Sep,Dec	28 Dec 12	29 Sep 14	155.0	155.0
CEN-W2	0.28	2.24	0.17	Out of the Money	0	4	29	8.40	5.65%	2.10000	1 : 1.05@2.1	End of Mar,Jun,Sep,Dec	30 Sep 10	17 Jan 13	124.9	119.6
CEN-W3	0.69	2.24	0.45	Out of the Money	2	9	21	3.25	20.09%	2.00000	1 : 1@2	End of Mar,Jun,Sep,Dec	30 Oct 09	10 Jun 15	117.5	117.5
CGD-W2	0.11	0.47	0.06	Out of the Money	0	10	2	4.27	29.79%	0.50000	1 : 1@0.5	End of Mar,Jun,Sep,Dec	30 Sep 10	21 Jun 13	843.1	843.0
CGS-W5	0.08	0.94	0.00	Out of the Money	0	4	30	12.48	58.01%	1.41000	1 : 1.0625@1.41	End of Mar,Jun,Sep,Dec	15 Sep 00	18 Jan 13	464.4	464.4
CIG-W3	0.01	0.56	0.00	Out of the Money	0	0	12	840.00	60.83%	0.90000	1 : 15@0.9	End of every Month	31 Aug 11	31 Aug 12	2759.1	2759.1
CSP-W1	0.26	1.9	0.02	Out of the Money	1	3	11	7.31	118.95%	3.90000	1 : 1@3.9	End of May and Nov	31 May 08	29 Nov 13	125.0	125.0
DEMCO-W4	2.16	6.1	1.44	Out of the Money	0	5	23	2.84	16.91%	4.98000	1 : 1.004@4.98	End of Mar,Jun,Sep,Dec	30 Dec 10	10 Feb 13	72.6	72.6
EARTH-W3	3.52	5	3.66	Out of the Money	4	0	28	1.45	-1.78%	1.47000	1 : 1.023@1.47	15 Mar, 15 Sep	30 Dec 10	15 Sep 16	444.5	444.4
ECL-W1	0.29	1.06	0.24	Out of the Money	1	3	13	3.66	21.70%	1.00000	1 : 1@1	End of Jun,Dec	30 Dec 10	1 Dec 13	205.0	205.0
EMC-W3	0.37	1.49	0.16	Out of the Money	1	7	9	4.03	25.50%	1.50000	1 : 1@1.5	End of Mar,Jun,Sep,Dec	28 Sep 12	29 Mar 14	293.2	293.2
EPCO-W1	0.6	2.02	0.21	Out of the Money	2	2	1	3.42	41.64%	2.27000	1 : 1.015@2.27	End of Mar,Jun,Sep,Dec	30 Mar 12	20 Oct 14	128.9	128.8
ERW-W2	0.58	2.62	0.14	Out of the Money	1	3	28	4.52	29.01%	2.80000	1 : 1@2.8	41625	17 Dec 13	17 Dec 13	224.5	224.5
E-W1	0.5	1.35	0.86	Out of the Money	8	4	5	2.70	48.15%	1.50000	1 : 1@1.5	End of Mar,Jun,Sep,Dec	31 Mar 11	22 Dec 20	347.0	347.0
FOCUS-W1	1.25	3.08	2.16	Out of the Money	1	9	26	2.46	37.99%	3.00000	1 : 1@3	End of Jan,Apr,Jul,Nov	31 Jul 09	15 Jun 14	62.5	62.5
GEN-W3	0.05	0.23	0.00	Out of the Money	1	8	25	4.60	356.52%	1.00000	1 : 1@1	End of Dec	30 Dec 11	15 May 14	577.9	577.9
GJS-W2	0.14	0.14	0.03	Out of the Money	5	3	24	3.00	111.90%	0.25000	1 : 3@0.25	End of Jun,Dec	30 Dec 10	12 Dec 17	5000.0	4933.1
GLAND-W1	1.81	2.64	1.71	Out of the Money	1	9	6	1.46	6.44%	1.00000	1 : 1@1	End of Mar,Jun,Sep,Dec	30 Sep 11	26 May 14	164.4	164.3
GLOBAL-W	8.4	13.2	5.95	Out of the Money	0	8	28	1.89	0.38%	6.25000	1 : 1.2@6.25	18 Nov 11, 18 May 12, 16 Nov 12, 17 May 13	18 Nov 11	18 May 13	240.0	213.9
GOLD-W1	4.06	7	4.20	Out of the Money	1	7	11	1.72	0.86%	3.00000	1 : 1@3	End of Mar,Jun,Sep,Dec	30 Jun 11	31 Mar 14	504.1	504.1

The opinions and information presented in this report are those of the Globlex Securities Co. Ltd. Research Department. No representation or warranty in any form regarding the accuracy, completeness, correctness or fairness of opinions and information of this report is offered by Globlex Securities Co. Ltd. Globlex Securities Co. Ltd. accepts no liability whatsoever for any loss arising from the use of this report or its contents. This report (in whole or in part) may not be reproduced or published without the express permission of Globlex Securities Co. Ltd.

Warrant Table 20-24 Aug 2012

Warrant	Warrant Price	Stock Price	Black Scholes	Status	Time to maturity			Gearing Ratio(x)	Premium	Exercise Price	Exercise Ratio	Exercise Period	First Exercise	Expire Date	Warrant Issued(mn)	Outstanding Warrant(mn)
					y.	m.	d.									
IEC-W1	0.01	0.02	0.02	At the Money	1	9	29	2.00	0.00%	0.01000	1 : 1@0.01	End of Mar,Jun,Sep,Dec	30 Sep 09	18 Jun 14	9061.3	8996.7
JMART-W1	10.5	14.3	11.49	In the Money	1	4	11	1.36	-5.59%	3.00000	1 : 1@3	End of Mar,Jun,Sep,Dec	30 Mar 12	30 Dec 13	69.0	13.6
KMC-W2	0.08	0.33	0.06	Out of the Money	2	10	1	4.13	227.27%	1.00000	1 : 1@1	End of Mar,Jun,Sep,Dec	28 Sep 12	20 Jun 15	1030.9	1030.9
L&E-W2	4.2	11.9	4.72	In the Money	0	9	3	2.83	-2.52%	7.40000	1 : 1@7.4	End of Jan, May, Sep	30 Sep 11	23 May 13	14.1	8.8
LEE-W2	1.27	3.84	1.41	In the Money	0	9	0	3.02	-1.82%	2.50000	1 : 1@2.5	End of Jun,Dec	30 Dec 10	20 May 13	294.0	241.5
LIVE-W1	0.04	0.1	0.03	Out of the Money	1	5	3	2.88	104.71%	0.17000	1 : 1.1524@0.17	End of Mar,Jun,Sep,Dec	31 Mar 09	21 Jan 14	2299.8	2219.8
LL-W1	0.06	0.26	0.07	Out of the Money	2	5	27	4.33	307.69%	1.00000	1 : 1@1	End of Jun,Dec	29 Jun 12	14 Feb 15	780.0	780.0
MATCH-W2	1.03	2.22	0.97	Out of the Money	1	9	9	2.16	9.41%	1.40000	1 : 1.001@1.4	End of Mar,Jun,Sep,Dec	30 Dec 09	29 May 14	103.4	58.3
MILL-W1	1.5	2.36	0.23	Out of the Money	1	6	6	4.30	0.79%	1.83000	1 : 2.734@1.83	End of Jun,Dec	30 Jun 12	24 Feb 14	114.6	114.6
MINT-W4	3.54	15.1	3.33	Out of the Money	0	8	28	4.69	-0.41%	11.82000	1 : 1.1@11.82	End of Month	30 Jun 10	18 May 13	325.4	307.0
MJD-W1	0.76	2.56	0.71	Out of the Money	0	10	9	3.37	7.81%	2.00000	1 : 1@2	End of Mar,Jun,Sep,Dec	30 Sep 10	28 Jun 13	350.0	345.6
NEP-W2	0.62	0.83	0.43	Out of the Money	4	3	27	1.34	34.94%	0.50000	1 : 1@0.5	End of Mar,Jun,Sep,Dec	15 Mar 12	15 Dec 16	492.9	492.9
NNCL-W2	0.76	1.72	0.84	Out of the Money	3	4	10	2.26	2.33%	1.00000	1 : 1@1	End of Mar,Jun,Sep,Dec	31 Mar 11	29 Dec 15	725.0	724.6
PF-W2	5	1.06	-	Out of the Money	0	2	18	1.27	-21.38%	0.00000	1 : 6@0	End of Jun,Dec	30 Dec 02	6 Nov 12	50.9	7.7
PF-W3	0.55	1.06	0.29	Out of the Money	2	10	28	1.93	46.23%	1.00000	1 : 1@1	End of Mar,Jun,Sep,Dec	28 Sep 12	18 Jul 15	393.9	393.9
PYLON-W1	2.42	4.48	2.53	Out of the Money	2	8	6	1.85	3.13%	2.20000	1 : 1@2.2	End of Jun,Dec	28 Dec 12	25 Apr 15	100.0	100.0
RML-W3	0.52	1.63	0.08	Out of the Money	2	8	25	3.13	100.61%	2.75000	1 : 1@2.75	End of Mar,Jun,Sep,Dec	29 Jun 12	15 May 15	893.8	893.8
ROJNA-W2	6.45	9.45	5.31	Out of the Money	1	11	10	1.76	-7.88%	3.33000	1 : 1.19982@3.33	End of Feb, May, Aug, Nov	30 Nov 09	30 Jul 14	299.1	27.8
ROJNA-W3	5.3	9.45	6.07	In the Money	3	10	29	1.78	-1.59%	4.00000	1 : 1@4	End of Mar,Jun,Sep,Dec	30 Dec 11	18 Jul 16	386.4	380.6
RS-W2	2.9	4.96	3.19	In the Money	1	8	29	1.71	-3.23%	1.90000	1 : 1@1.9	End of Jun,Dec	30 Jun 11	19 May 14	140.0	140.0
SAM-W1	0.31	0.99	0.07	Out of the Money	0	2	24	3.19	32.32%	1.00000	1 : 1@1	End of Jun,Dec	30 Dec 10	12 Nov 12	212.4	212.4
SIMAT-W1	1.93	3.14	1.85	Out of the Money	2	0	9	1.81	-1.71%	1.35000	1 : 1.1116@1.35	End of Mar,Jun,Sep,Dec	30 Dec 11	28 Aug 14	41.5	41.5
SINGHA-W	0.06	0.3	0.00	Out of the Money	2	3	10	5.00	1920.00%	6.00000	1 : 1@6	End of May,Nov	30 May 08	28 Nov 14	112.0	112.0
SIRI-W1	1.34	2.28	1.09	Out of the Money	2	5	2	1.99	-0.95%	1.11000	1 : 1.167@1.11	End of Mar,Jun,Sep,Dec	31 Mar 12	20 Jan 15	2947.2	2927.9
SLC-W1	0.03	0.46	0.67	Out of the Money	2	8	26	6.52	119.69%	0.94000	1 : 0.425@0.94	End of May and Nov	30 Nov 10	16 May 15	250.0	250.0
SLC-W2	0.03	0.46	1.94	Out of the Money	3	2	9	2.68	61.20%	0.57000	1 : 0.1749@0.57	End of Mar and Jun	31 Mar 10	28 Oct 15	606.1	606.1
SLC-W3	0.1	0.46	0.34	Out of the Money	4	0	27	4.60	139.13%	1.00000	1 : 1@1	End of Mar and Sep	30 Sep 11	14 Sep 16	484.9	484.9
SPCG-W1	12.6	15.7	14.79	In the Money	2	6	12	1.25	-13.38%	1.00000	1 : 1@1	42091	28 Mar 15	2 Mar 15	280.0	280.0
SPORT-W3	1.4	2.86	1.16	Out of the Money	2	8	2	2.36	1.54%	1.69000	1 : 1.15304@1.69	End of Mar,Jun,Sep,Dec	30 Jun 08	21 Apr 15	44.9	39.5
SPORT-W4	1.14	2.86	1.25	Out of the Money	1	11	26	2.55	-0.68%	1.72000	1 : 1.01731@1.72	End of Mar,Jun,Sep,Dec	30 Jun 08	15 Aug 14	69.2	62.8

The opinions and information presented in this report are those of the Globlex Securities Co. Ltd. Research Department. No representation or warranty in any form regarding the accuracy, completeness, correctness or fairness of opinions and information of this report is offered by Globlex Securities Co. Ltd. Globlex Securities Co. Ltd. accepts no liability whatsoever for any loss arising from the use of this report or its contents. This report (in whole or in part) may not be reproduced or published without the express permission of Globlex Securities Co. Ltd.

Warrant Table 20-24 Aug 2012

Warrant	Warrant Price	Stock Price	Black Scholes	Status	Time to maturity			Gearing Ratio(x)	Premium	Exercise Price	Exercise Ratio	Exercise Period	First Exercise	Expire Date	Warrant Issued(mn)	Outstanding Warrant(mn)
					y.	m.	d.									
STPI-W1	34.5	31.25	20.54	Out of the Money	0	8	16	1.27	-13.44%	2.48000	1 : 1.40418@2.48	End of May,Nov	29 May 09	6 May 13	83.3	1.6
TAPAC-W1	1.15	3.42	1.19	Out of the Money	0	9	11	2.97	0.88%	2.30000	1 : 1@2.3	End of Jan,Apr,Jul,Oct	3 Jan 11	31 May 13	46.0	45.1
TASCO-W3	6.2	39	0.00	Out of the Money	1	7	28	6.29	79.33%	63.74000	1 : 1@63.74	End of Mar,Jun,Sep,Dec	31 May 11	17 Apr 14	15.3	15.3
TCC-W1	1.65	2.18	1.17	Out of the Money	2	2	11	1.61	-0.18%	0.82000	1 : 1.21673@0.82	End of Jun	30 Jun 09	30 Oct 14	323.0	221.4
TCC-W2	1.48	2.18	1.36	Out of the Money	5	8	14	1.57	6.81%	0.94000	1 : 1.06594@0.94	End of Feb,May,Aug,Nov	30 Nov 11	3 May 18	76.0	68.7
TCC-W3	1.36	2.18	1.54	Out of the Money	9	7	14	1.60	8.26%	1.00000	1 : 1@1	End of Mar,Jun,Sep,Dec	28 Dec 12	1 Apr 22	92.2	92.2
TCJ-W1	3.6	8.7	2.32	Out of the Money	3	6	28	2.42	56.32%	10.00000	1 : 1@10	End of Mar,Jun,Sep,Dec	30 Jun 03	17 Mar 16	11.1	9.1
TFD-W1	1.14	2.12	0.96	Out of the Money	0	7	11	2.21	-7.57%	1.00000	1 : 1.188@1	End of Mar,Jun,Sep,Dec	30 Jun 03	31 Mar 13	128.9	122.4
TICON-W3	0.52	12.8	0.04	Out of the Money	1	5	13	25.45	55.02%	19.34000	1 : 1.03402@19.34	End of Mar,Jun,Sep,Dec	31 Mar 10	31 Jan 14	219.4	219.3
TLUXE-W2	1.42	3.98	1.71	In the Money	2	6	2	2.80	-1.51%	2.50000	1 : 1@2.5	End of Mar,Sep	30 Mar 12	20 Feb 15	169.0	134.1
TPOLY-W1	0.48	1.62	0.18	Out of the Money	0	9	18	3.38	22.22%	1.50000	1 : 1@1.5	End of Jun,Dec	30 Dec 11	7 Jun 13	84.0	84.0
TRUBB-W1	1.66	3.08	0.21	Out of the Money	1	11	18	1.86	57.79%	3.20000	1 : 1@3.2	End of Jun,Dec	30 Dec 11	7 Aug 14	54.5	54.5
TSF-W1	1	0.37	0.14	Out of the Money	0	2	28	0.73	63.31%	0.10000	1 : 1.98315@0.1	End of Feb,May,Aug,Nov	26 Feb 10	16 Nov 12	225.0	4.8
TSF-W2	0.15	0.37	0.13	Out of the Money	2	8	24	2.47	21.62%	0.30000	1 : 1@0.3	End of Feb,May,Aug,Nov	31 Aug 12	14 May 15	514.8	514.8
TSTH-W1	0.01	0.77	0.00	Out of the Money	0	3	13	77.00	174.03%	2.10000	1 : 1@2.1	End of Mar,Jun,Sep,Dec	31 Mar 03	1 Dec 12	1083.3	1083.3
TSTH-W2	0.01	0.77	0.00	Out of the Money	0	3	13	77.00	694.81%	6.11000	1 : 1@6.11	End of Mar,Jun,Sep,Dec	31 Mar 03	1 Dec 12	1520.8	-
TYM-W1	0.62	4.32	0.23	Out of the Money	1	10	4	6.97	30.09%	5.00000	1 : 1@5	End of Mar ,Sep	30 Mar 12	23 Jun 14	100.0	-

Price As of : 17 August 2012

Note : "BLAND-W2" Exercise Price Year 1 = 1.10 Bt, Year 2 = 1.30 Bt, Year 3 = 1.50 Bt, Year 4 = 1.70 Bt, Year 5 = 1.90 Bt

"BLAND-W3" Exercise Price Year 1 = 1.10 Bt, Year 2 = 1.30 Bt, Year 3 = 1.50 Bt, Year 4 = 1.70 Bt, Year 5 = 1.90 Bt

Exercise Ratio is Warrant : no. of shares of common stock